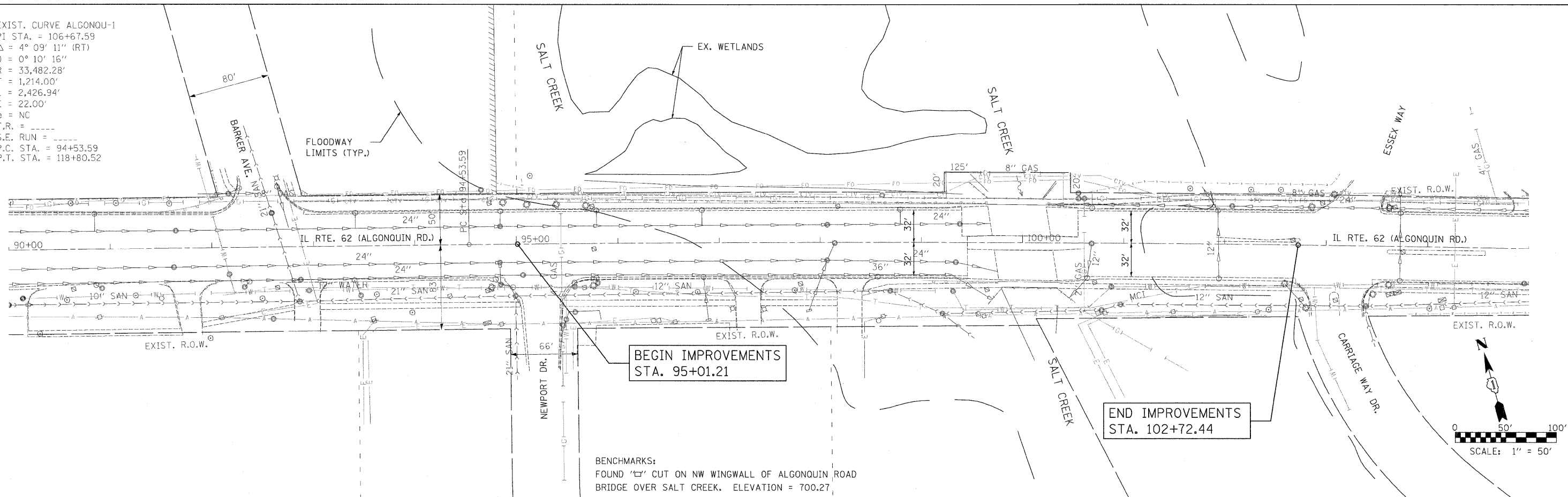


EXIST. CURVE ALGONQU-1  
 PI STA. = 106+67.59  
 $\Delta = 4^\circ 09' 11''$  (RT)  
 $D = 0^\circ 10' 16''$   
 $R = 33,482.28'$   
 $T = 1,214.00'$   
 $L = 2,426.94'$   
 $E = 22.00'$   
 $e = NC$   
 $T.R. =$   
 $S.E. RUN =$   
 $P.C. STA. = 94+53.59$   
 $P.T. STA. = 118+80.52$

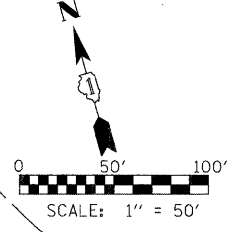
PLAN	SURVEYED	DATE
	PLOTTED	
	NOTED	
	FILED	
	CAD FILE NAME	



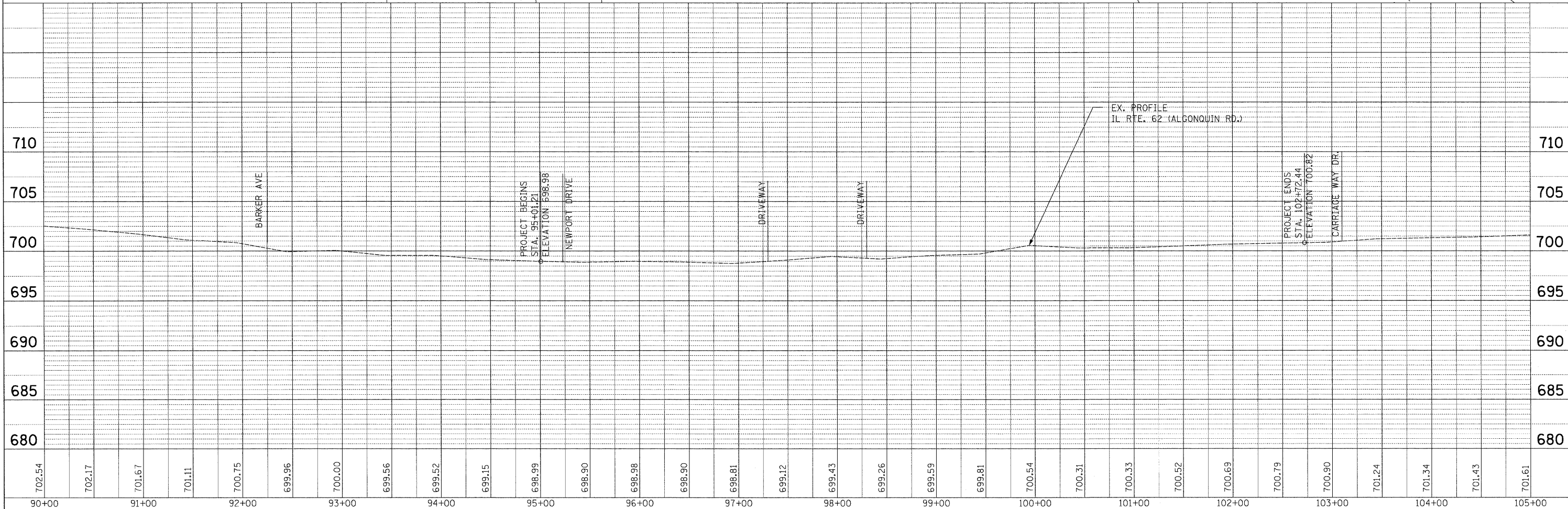
BEGIN IMPROVEMENTS  
 STA. 95+01.21

END IMPROVEMENTS  
 STA. 102+72.44

BENCHMARKS:  
 FOUND '□' CUT ON NW WINGWALL OF ALGONQUIN ROAD  
 BRIDGE OVER SALT CREEK. ELEVATION = 700.27



PROFILE	SURVEYED	DATE
	PLOTTED	
	NOTED	
	FILED	
	CAD FILE NAME	



702.54	702.17	701.67	701.11	700.75	699.96	700.00	699.56	699.52	699.15	698.99	698.90	698.98	698.90	698.81	699.12	699.43	699.26	699.59	699.81	700.54	700.31	700.33	700.52	700.69	700.79	700.90	701.24	701.34	701.43	701.61	
90+00	91+00	92+00	93+00	94+00	95+00	96+00	97+00	98+00	99+00	100+00	101+00	102+00	103+00	104+00	105+00																

STATE OF ILLINOIS  
 DEPARTMENT OF TRANSPORTATION

EXISTING PLAN AND PROFILE  
 IL ROUTE 62 (ALGONQUIN ROAD) OVER SALT CREEK

F.A.P. RTE. 339	SECTION 116-Y-2-BR-1	COUNTY COOK	TOTAL SHEETS 74	SHEET NO. 14
FED. ROAD DIST. NO.		ILLINOIS FED. AID PROJECT		

SCALE: 1" = 50' SHEET NO. 1 OF 1 SHEETS STA. 95+01.21 TO STA. 112+72.44

CONTRACT NO. 60J00