

LEGEND

- WORK AREA
- IMPACT ATTENUATORS, TEMPORARY (FULLY REDIRECTIVE, NARROW), TEST LEVEL 3
- TYPE III BARRICADE
- TYPE I OR II BARRICADE
- TEMPORARY CONCRETE BARRIER
- DRUM WITH STEADY BURN MONODIRECTIONAL LIGHT (PER HWY. STD. 701606)
- DIRECTION INDICATOR BARRICADE WITH STEADY BURN MONODIRECTIONAL LIGHT (PER HWY. STD. 701606)
- SIGN

G20-2
STA. 89+00.00
**END
CONSTRUCTION**

R3-2
STA. 92+11

R3-2
STA. 96+00

R3-2
STA. 89+50
STA. 90+31
STA. 91+50
STA. 92+00
STA. 93+17

W6-3(O)-48
STA. 92+50

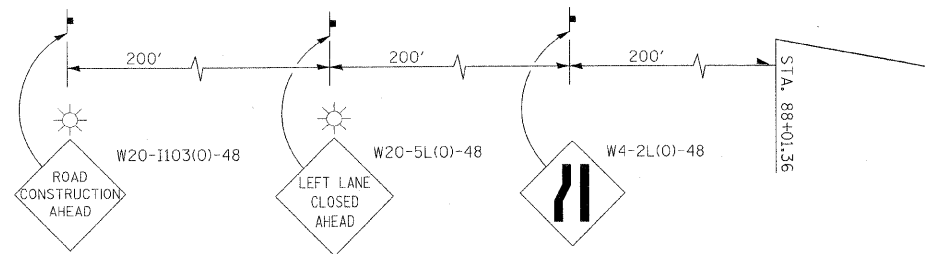
W20-1103(O)-48
ROAD
CONSTRUCTION
AHEAD
M6-4

R3-2
STA. 97+55
STA. 98+55

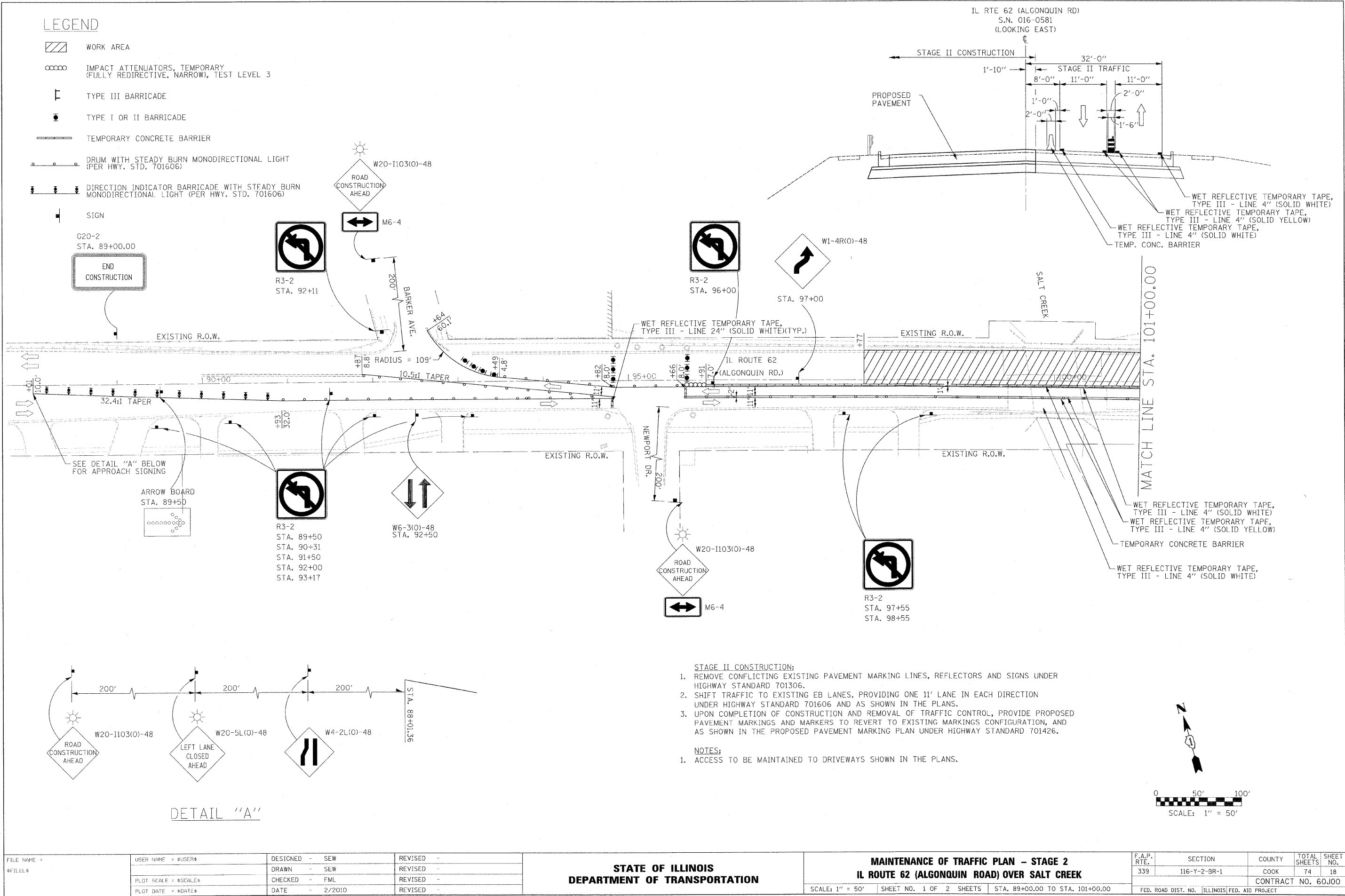
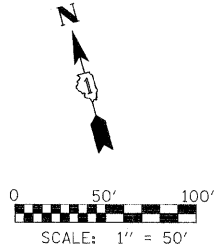
SEE DETAIL "A" BELOW
FOR APPROACH SIGNING

ARROW BOARD
STA. 89+50

DETAIL "A"



- STAGE II CONSTRUCTION:**
- REMOVE CONFLICTING EXISTING PAVEMENT MARKING LINES, REFLECTORS AND SIGNS UNDER HIGHWAY STANDARD 701306.
 - SHIFT TRAFFIC TO EXISTING EB LANES, PROVIDING ONE 11' LANE IN EACH DIRECTION UNDER HIGHWAY STANDARD 701606 AND AS SHOWN IN THE PLANS.
 - UPON COMPLETION OF CONSTRUCTION AND REMOVAL OF TRAFFIC CONTROL, PROVIDE PROPOSED PAVEMENT MARKINGS AND MARKERS TO REVERT TO EXISTING MARKINGS CONFIGURATION, AND AS SHOWN IN THE PROPOSED PAVEMENT MARKING PLAN UNDER HIGHWAY STANDARD 701426.
- NOTES:**
- ACCESS TO BE MAINTAINED TO DRIVEWAYS SHOWN IN THE PLANS.



FILE NAME =	USER NAME = #USER#	DESIGNED - SEW	REVISED -	STATE OF ILLINOIS DEPARTMENT OF TRANSPORTATION	MAINTENANCE OF TRAFFIC PLAN - STAGE 2 IL ROUTE 62 (ALGONQUIN ROAD) OVER SALT CREEK		F.A.P. RTE. 339	SECTION 116-Y-2-BR-1	COUNTY COOK	TOTAL SHEETS 74	SHEET NO. 18	
#FILE#	PLOT SCALE = #SCALE#	DRAWN - SEW	REVISED -		SCALE: 1" = 50'	SHEET NO. 1 OF 2 SHEETS	STA. 89+00.00 TO STA. 101+00.00	CONTRACT NO. 60J00				
	PLOT DATE = #DATE#	CHECKED - FML	REVISED -					FED. ROAD DIST. NO. [ILLINOIS] FED. AID PROJECT				
		DATE - 2/2010	REVISED -									