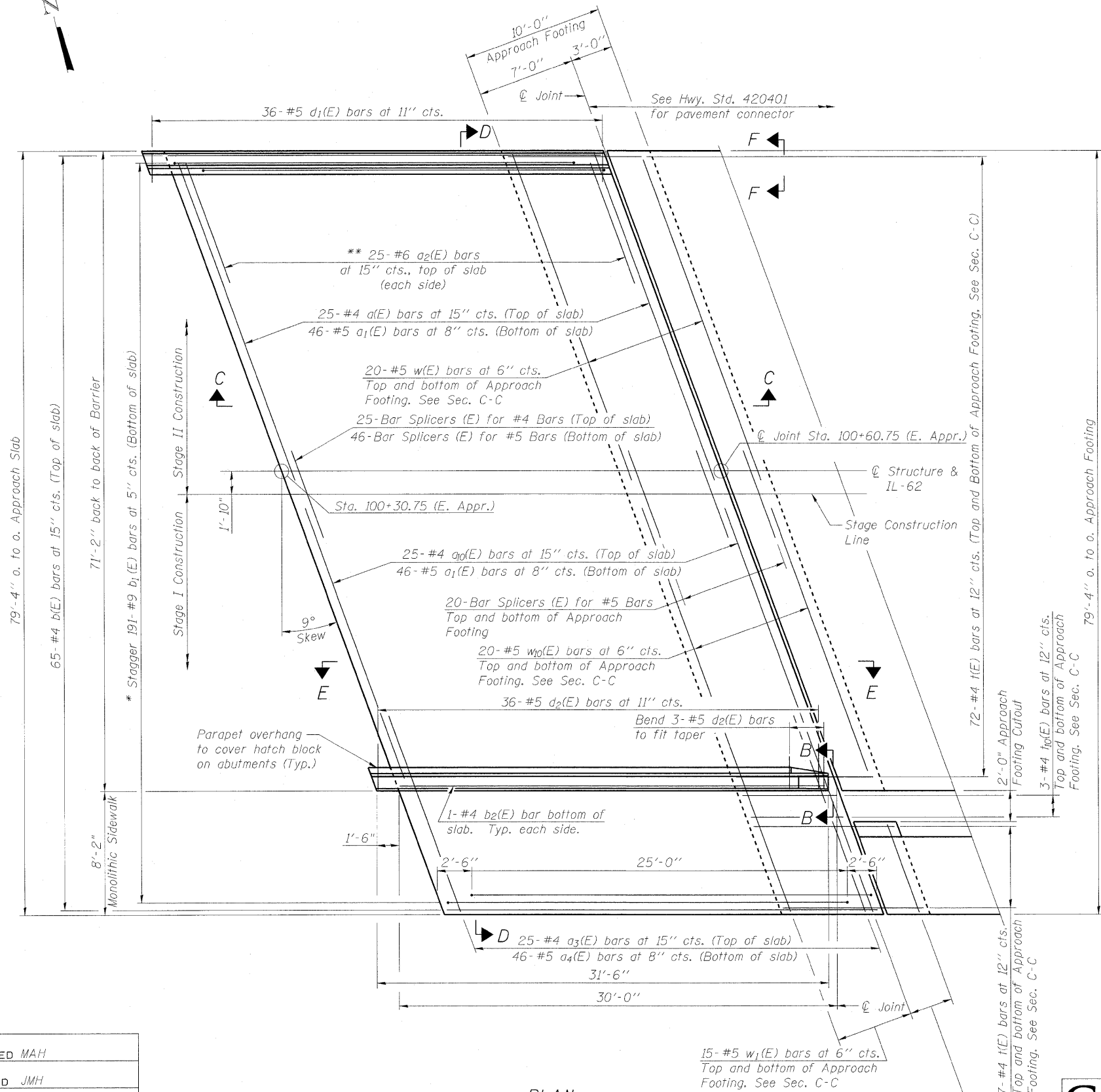


STATE OF ILLINOIS
DEPARTMENT OF TRANSPORTATION

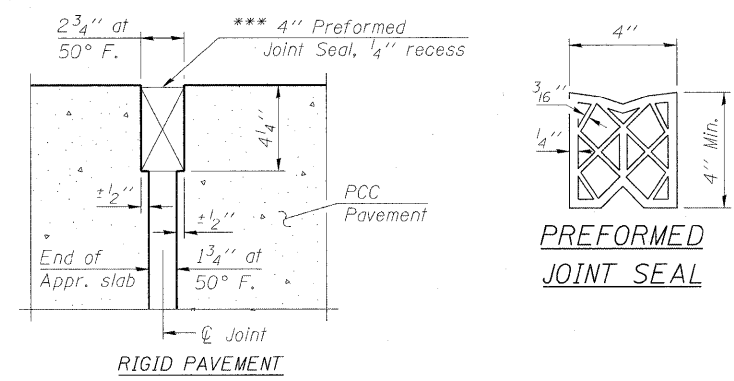
Notes:
See sheet S10 of S27 for Sections C-C & D-D and View E-E.
 $a_1(E)$, $a_2(E)$, $a_3(E)$ and $a_{11}(E)$ bar spacings measured along C.R.



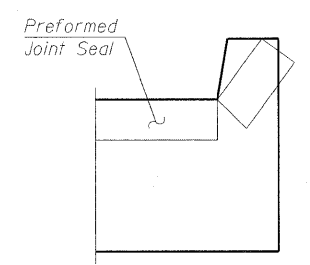
PLAN

* Tilt #9 $b_1(E)$ bars as required to maintain clearance.
** Space between $a_1(E)$ and $a_3(E)$ bars, typ. each parapet.

*** Cost included with Concrete Superstructure.

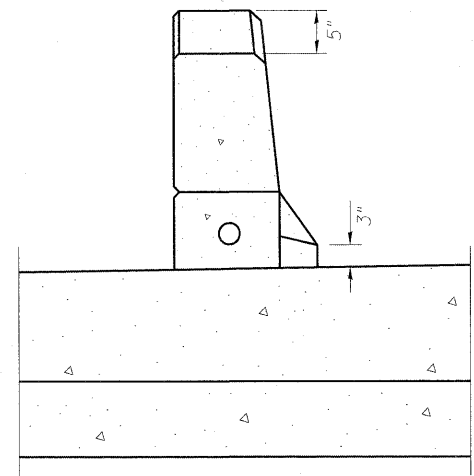


DETAIL A



VIEW F-F

Angle Preformed Joint Seal at 45° at curbs when req'd for drainage.



VIEW B-B

DESIGNED MAH
CHECKED JMH
DRAWN DR
CHECKED JMH

BA-R 11-1-09

(Sheet 1 of 2)
EAST BRIDGE APPROACH SLAB DETAILS
STRUCTURE NO. 016-0581

COLLINS ENGINEERS 123 N. WACKER DR., SUITE 300 CHICAGO, IL 60606 (312) 704-9300 <small>ILLINOIS PROFESSIONAL DESIGN FIRM LICENSE NO. 184-000993</small>	SHEET NO. S9 OF S27 SHEETS	F.A.P. RTE.	SECTION	COUNTY	TOTAL SHEETS	SHEET NO.
		339	116-Y-2-BR-1	COOK	74	31
				CONTRACT NO. 60J00		
ILLINOIS FED. AID PROJECT						