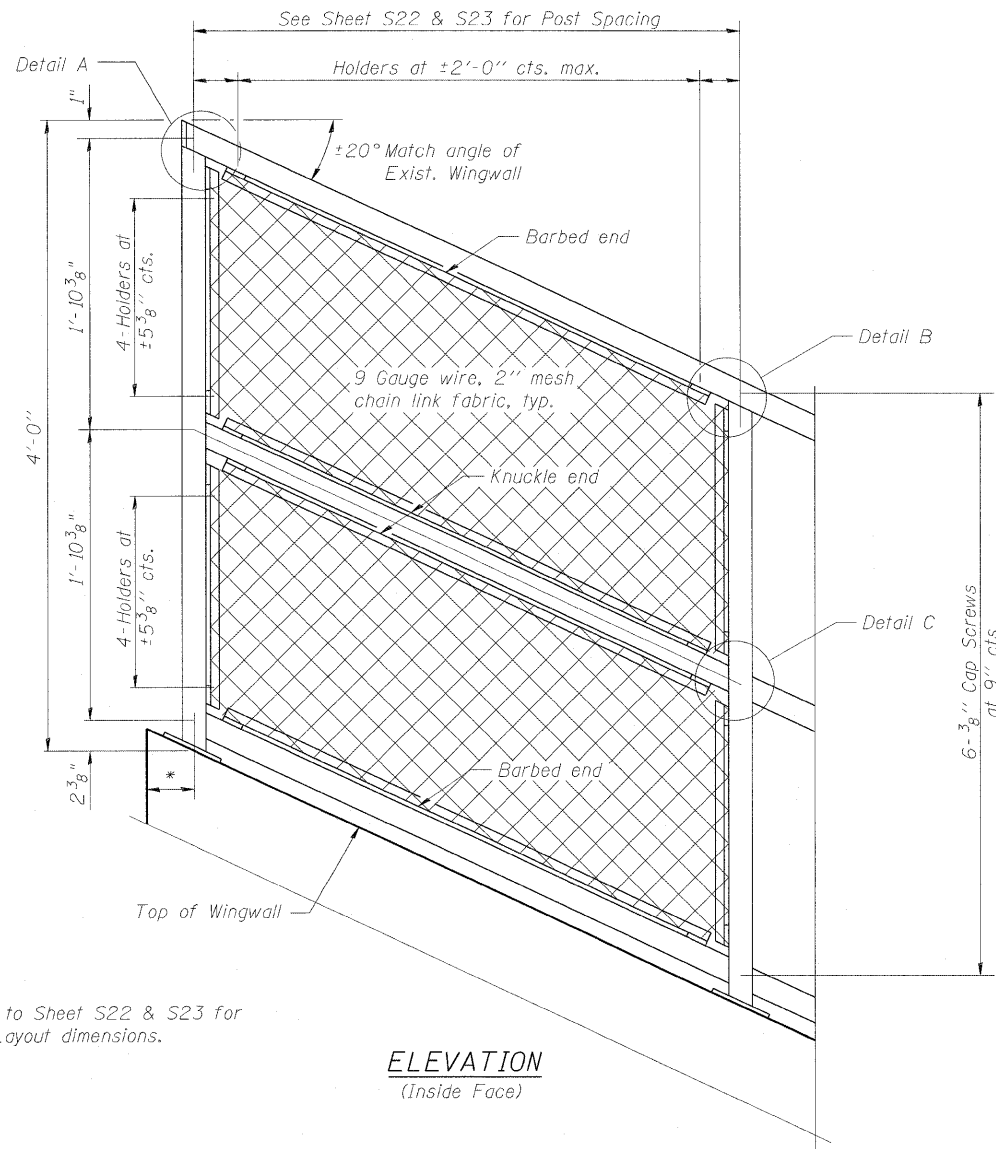
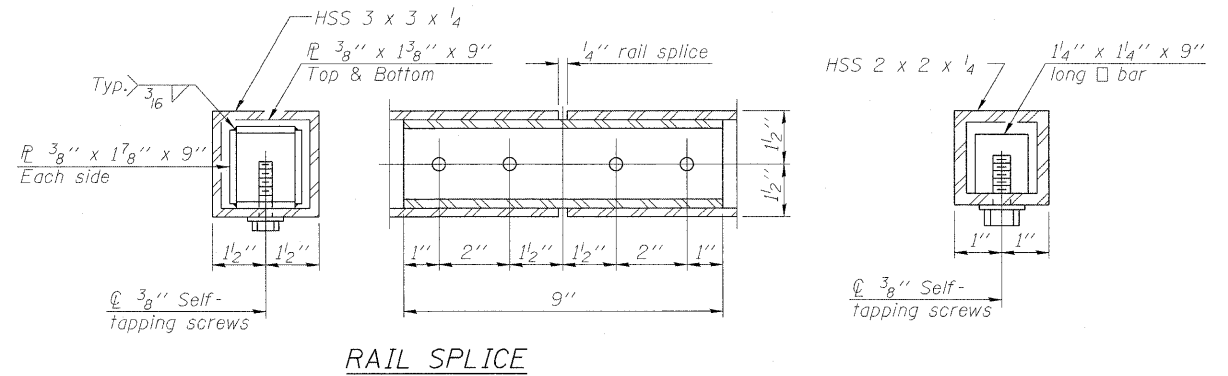
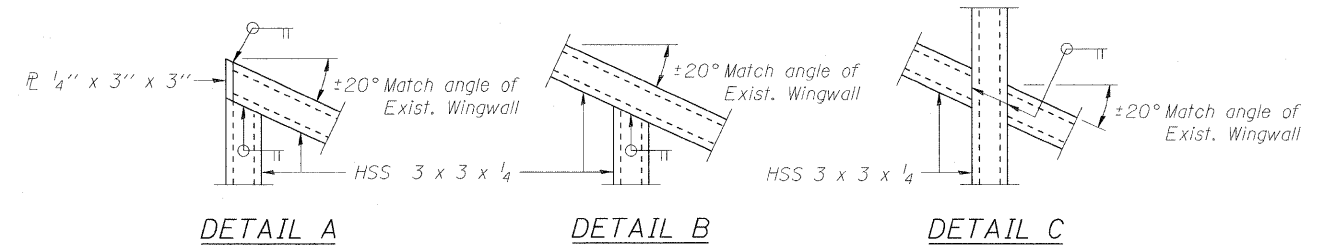


STATE OF ILLINOIS
DEPARTMENT OF TRANSPORTATION



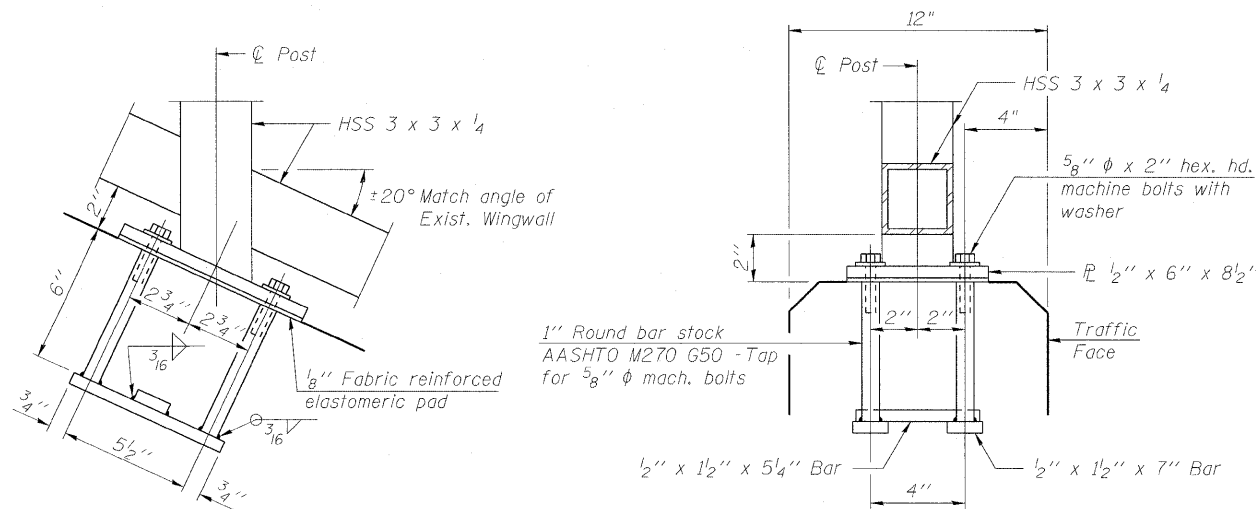
* Refer to Sheet S22 & S23 for Post Layout dimensions.



Note:
All steel rail elements shall be galvanized according to Article 509.05 of the Standard Specifications.
Contractor to verify all dimensions in field prior to ordering materials.

BILL OF MATERIAL

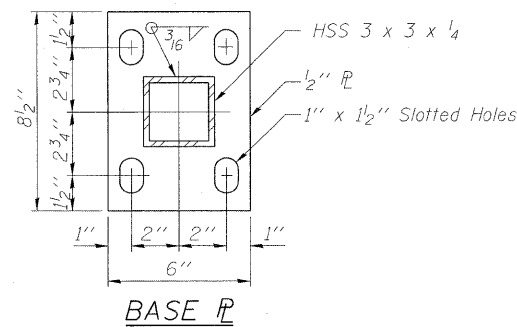
| Item | Unit | Quantity |
|--------------------------------|---------|----------|
| Bridge Fence Railing (Special) | Sq. Ft. | 364 |



ANCHOR BOLT DETAILS

In lieu of the cast-in-place anchor device shown, the Contractor has the option of drilling and setting 5/8" φ anchor rods according to Article 509.06 of the Standard Specifications. Embedment shall be according to the manufacturer's specifications.

(10'-0" Maximum Post Spacing)



(Sheet 2 of 2)
BRIDGE FENCE RAILING (SPECIAL)
STRUCTURE NO. 016-0581

| |
|--------------|
| DESIGNED MAH |
| CHECKED JMH |
| DRAWN DR |
| CHECKED JMH |

COLLINS ENGINEERS
123 N. WACKER DR., SUITE 300
CHICAGO, IL 60606
(312) 704-9300
ILLINOIS PROFESSIONAL DESIGN FIRM LICENSE NO. 184-000993

| | | | | | |
|-----------------------------|--------------------|----------------------|-------------|---------------------------|--------------|
| SHEET NO. S15 OF S27 SHEETS | F.A.P. RTE. 339 | SECTION 116-Y-2-BR-1 | COUNTY COOK | TOTAL SHEETS 74 | SHEET NO. 35 |
| | CONTRACT NO. 60J00 | | | ILLINOIS FED. AID PROJECT | |