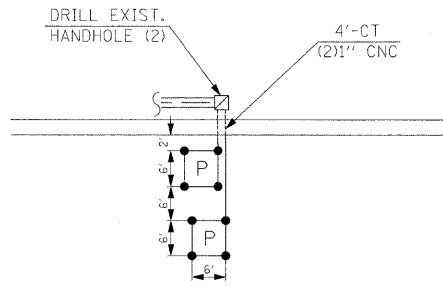


SCHEDULE OF INTERCONNECT QUANTITIES

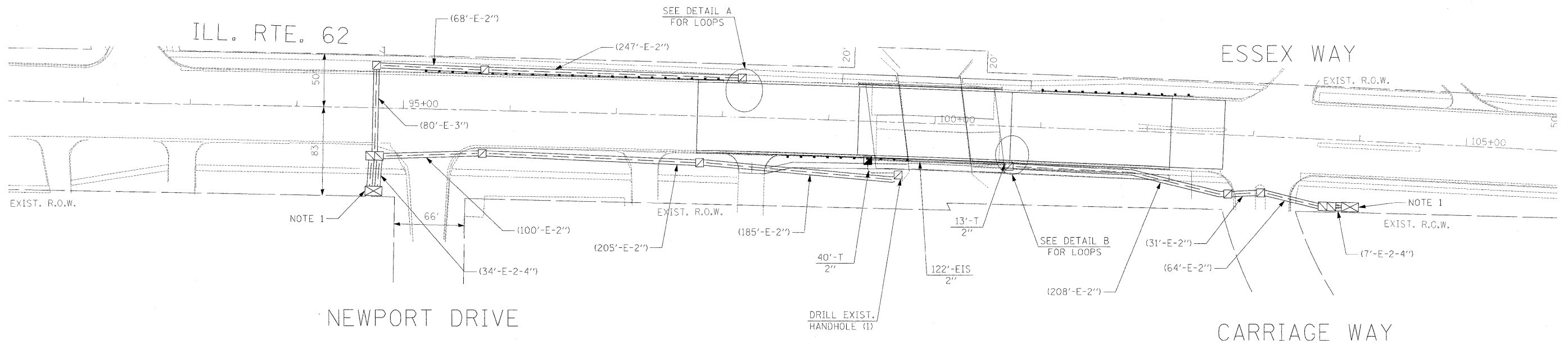
| QUANTITY | UNIT | ITEM |
|----------|------|---|
| 53 | FOOT | CONDUIT IN TRENCH, 2" DIA., GALVANIZED STEEL |
| 122 | FOOT | CONDUIT EMBEDDED IN STRUCTURE, 2" DIA., PVC |
| 53 | FOOT | TRENCH AND BACKFILL FOR ELECTRICAL WORK |
| 6 | EACH | DRILL EXISTING HANDHOLE |
| 1992 | FOOT | REMOVE ELECTRIC CABLE FROM CONDUIT |
| 1023 | FOOT | ELECTRIC CABLE IN CONDUIT, TRACER NO. 14 1C |
| 128 | FOOT | PREFORMED DETECTOR LOOP |
| 1049 | FOOT | FIBER OPTIC CABLE IN CONDUIT, NO. 62.5/125, MM12F SM12F |



(NOT TO SCALE)
DETAIL "A"

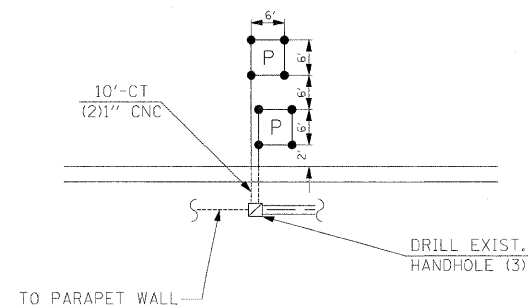
NOTE 1: REMOVE EXISTING FIBER OPTIC CABLE (1009') AND TRACER CABLE (983') BETWEEN NEWPORT DRIVE AND CARRIAGE WAY. INSTALL NEW FIBER OPTIC CABLE AND TRACER CABLE AS SHOWN IN PLANS AND AS DIRECTED BY THE ENGINEER.

NOTE 2: THE EXISTING "ELECTRIC CABLE IN CONDUIT, LEAD-IN, NO. 14 1 PAIR" SHALL BE REUSED FOR THE NEW PREFORMED DETECTOR LOOPS.



INTERCONNECT PLAN LEGEND

PROPOSED EXISTING
CONDUIT EMBEDDED IN STRUCTURE (EIS) ————



(NOT TO SCALE)
DETAIL "B"

THE TRAFFIC SIGNAL CONTROL EQUIPMENT FOR THIS PROJECT SHALL BE "ECONOLITE" TO MATCH THE EXISTING ADJACENT SYSTEM.

| | | | | | | | | | | | |
|-------------|--------------------|------------------|-----------|---|---|---------------------------|--------------|--------------|--------------|-----------|--|
| FILE NAME = | USER NAME = #USER# | DESIGNED - PKG | REVISED - | STATE OF ILLINOIS DEPARTMENT OF TRANSPORTATION | PROPOSED INTERCONNECT PLAN ILL. RTE. 62 (ALGONQUIN RD.) FROM NEWPORT DRIVE TO CARRIAGE WAY | F.A.P. RTE. | SECTION | COUNTY | TOTAL SHEETS | SHEET NO. | |
| #FILEL# | | DRAWN - MAA, EA | REVISED - | | | 339 | 116-Y-2-BR-1 | COOK | 74 | 59 | |
| | | CHECKED - PKG | REVISED - | | | CONTRACT NO. 60J00 | | | | | |
| | | DATE - 6/23/2010 | REVISED - | | | ILLINOIS FED. AID PROJECT | | | | | |
| | | | | | SCALE: 1"=50' | SHEET NO. OF SHEETS | | STA. TO STA. | | | |