

PROJECT LOCATED IN UNINCORPORATED WILL COUNTY IN THE TOWNSHIP OF CUSTER, JUST SOUTH OF THE CITY OF WILMINGTON

STATE OF ILLINOIS
DEPARTMENT OF TRANSPORTATION
DIVISION OF HIGHWAYS

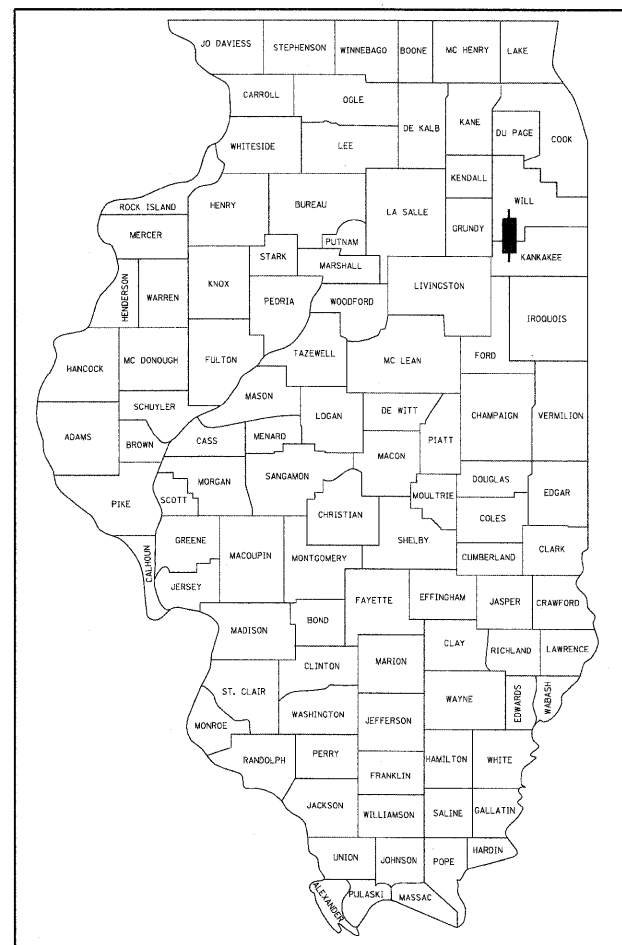
F.A.U. RTE.	SECTION	COUNTY	TOTAL SHEETS	SHEET NO.
0327	112 T-2	WILL	22	1
FED. ROAD DIST. NO.	ILLINOIS	CONTRACT NO. 60J17		

D-91-198-10 * 22+1 = 23

FOR INDEX OF SHEETS, SEE SHEET NO. 2

PROPOSED HIGHWAY PLANS
2-BARREL BOX CULVERT
REPLACEMENT PROJECT

FAU ROUTE 327 (WEST RIVER ROAD) OVER
UNNAMED TRIBUTARY TO KANKAKEE RIVER
(0.1 MI. NORTH OF IL ROUTE 113)
SECTION 112 T-2
WILL COUNTY
C-91-198-10

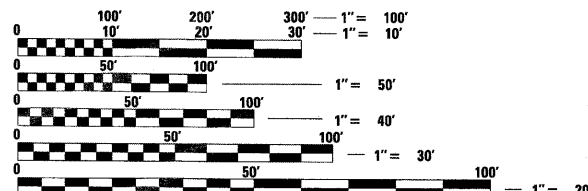


LOCATION OF SECTION INDICATED THUS: - [black box] -

DESIGN DESIGNATION
MINOR ARTERIAL (URBAN)
ADT 2650 (2008)
SPEED LIMIT 55 MPH

THE PROPOSED WORK TO BE PERFORMED CONSISTS OF REMOVING THE EXISTING 12'x5.5' CULVERT AT STATION 82+55.73, AND REPLACING THE EXISTING STRUCTURE WITH A NEW 8'x8' DOUBLE-BARREL PRE-CAST CONCRETE BOX CULVERT, REMOVE EXISTING 36" CMP THAT DRAINS DITCH IN NORTHEAST QUADRANT OF IL RT 113 AND WEST RIVER ROAD AND GRADE NEW DITCH TO DRAIN INTO EAST SIDE OF CULVERT, REMOVE 18" CMP SOUTHWEST OF CULVERT, INSTALL MANHOLE TO DRAIN 40' OF DITCH NORTH OF SOUTH DRIVEWAY ON WEST SIDE OF ROADWAY, INSTALL 24" STORM SEWER FROM MANHOLE TO DRAIN INTO WEST SIDE OF CULVERT, AND RECONSTRUCT ROADWAY WITH A WIDER PAVED SHOULDER UTILIZING NON-PHASED DEMOLITION AND CONSTRUCTION. THE EXISTING STRUCTURE NUMBER IS 099-0350.

THE PROPOSED STRUCTURE NUMBER IS SN 099-0520.

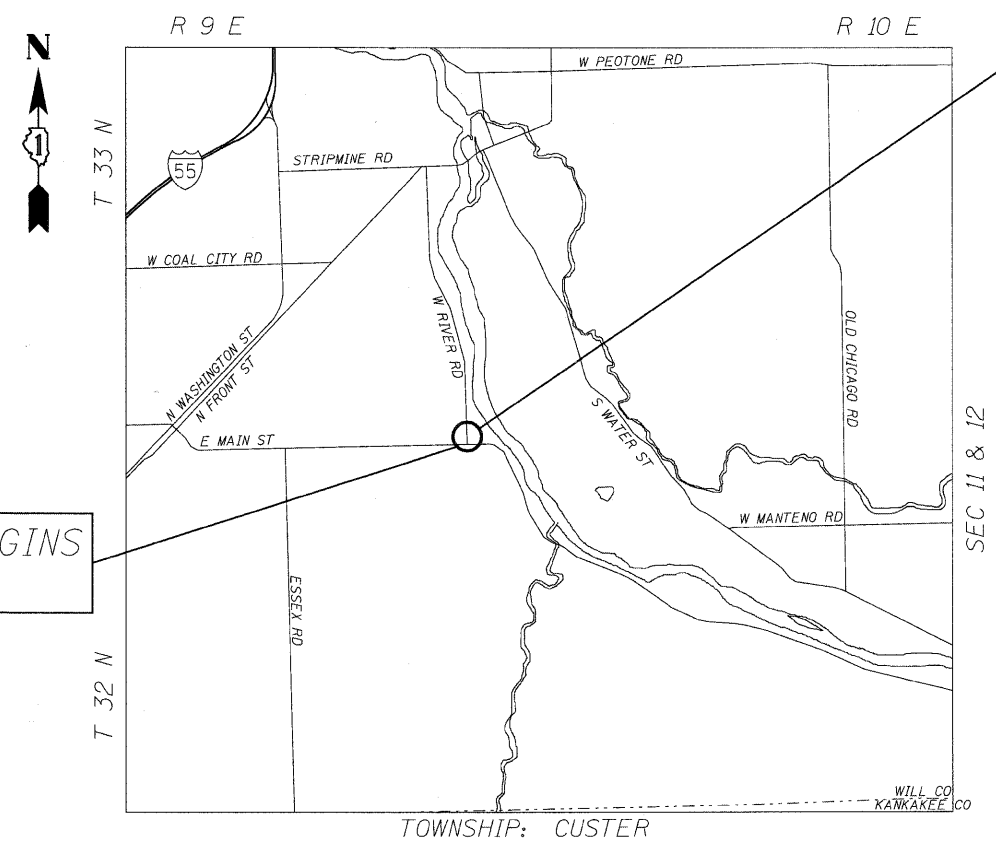


FULL SIZE PLANS HAVE BEEN PREPARED USING STANDARD ENGINEERING SCALES. REDUCED SIZED PLANS WILL NOT CONFORM TO STANDARD SCALES. IN MAKING MEASUREMENTS ON REDUCED PLANS, THE ABOVE SCALES MAY BE USED.

J.U.L.I.E.
JOINT UTILITY LOCATION INFORMATION FOR EXCAVATION
1-800-892-0123
OR 811

PROJECT MANAGER: KIM HARVEY (847) 705-4055
PROJECT ENGINEER:

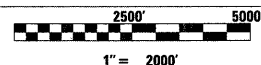
CONTRACT NO. 60J17



PROJECT BEGINS
STA. 81+40

PROJECT ENDS
STA. 84+20

LOCATION MAP



NET AND GROSS LENGTH OF PROJECT = 280' = 0.053 MI

STATE OF ILLINOIS
DEPARTMENT OF TRANSPORTATION
DIVISION OF HIGHWAYS

SUBMITTED June 25, 2010

Diane M. O'Keefe
DEPUTY DIRECTOR OF HIGHWAYS, REGION ENGINEER

August 13, 2010
Scott E. Stitt, P.E.
acting ENGINEER OF DESIGN AND ENVIRONMENT

August 13, 2010
Christine M. Reed
DIRECTOR OF HIGHWAYS, CHIEF ENGINEER

PRINTED BY THE AUTHORITY
OF THE STATE OF ILLINOIS

LOCO, INC.
CONSULTING ENGINEERS
1560 WALL ST., SUITE 222
NAPEVILLE, ILLINOIS 60563 Ph: 16301 577-9100

Walters
REGISTERED PROFESSIONAL ENGINEER
ILLINOIS
EX. 11-30-10 EX. 11-30-11