

SHEETS  
EX D SHEETS, SEE SHEET NO. 2

PROJECT LOCATED IN VILLAGE OF POSEN  
BY THE CITY OF MA

**TRAFFIC DATA:**

DATE 57:	(2030)	DESIGN SPEED	POST
NORTHBOUND	1,130	60 MPH	55 MPH
SOUTHBOUND	1,880	60 MPH	55 MPH

**PROJECT DESCRIPTION**

THE PROPOSED IMPROVEMENT INCLUDES REMOVAL OF S.N. 016-1096 & S.N. 016-1097 REPLACEMENT WITH A NEW BRIDGE (S.N. 016-1251) AT I-57 OVER I-294 CONSTRUCTION OF AN I-57 OVER FUTURE RAMP B BRIDGE (S.N. 016-1252), PAVEMENT WIDENING, MEDIAN RECONSTRUCTION, AND PARTIAL RESURFACING ALONG I-57.

**DESIGN DESIGNATION**

2 (0) Interstate

STATE OF ILLINOIS  
DEPARTMENT OF TRANSPORTATION  
DIVISION OF HIGHWAYS

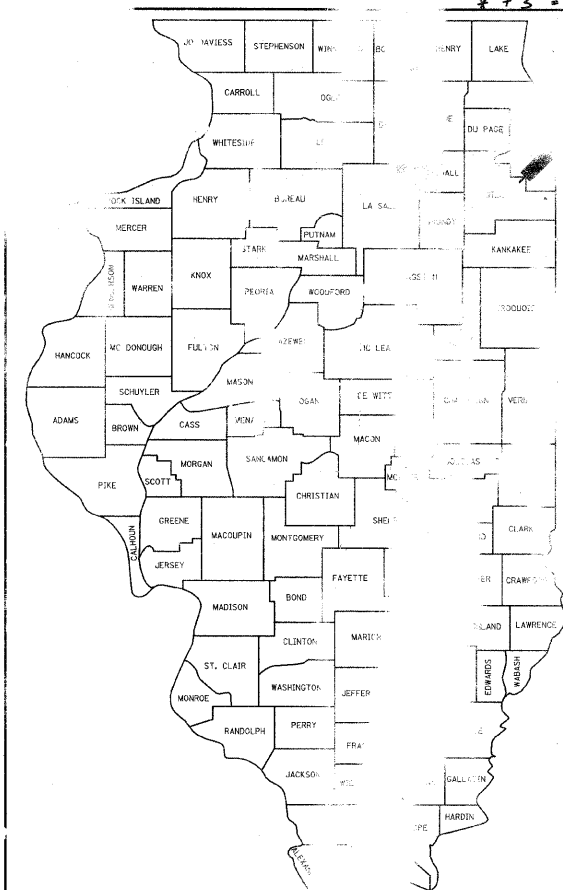
**PROPOSED  
HIGHWAY PLANS**

F.A.I. ROUTE 57 (INTERSTATE 57) OVER  
I-294 (TRI-STATE TOLLWAY)  
SECTION 1414.2B

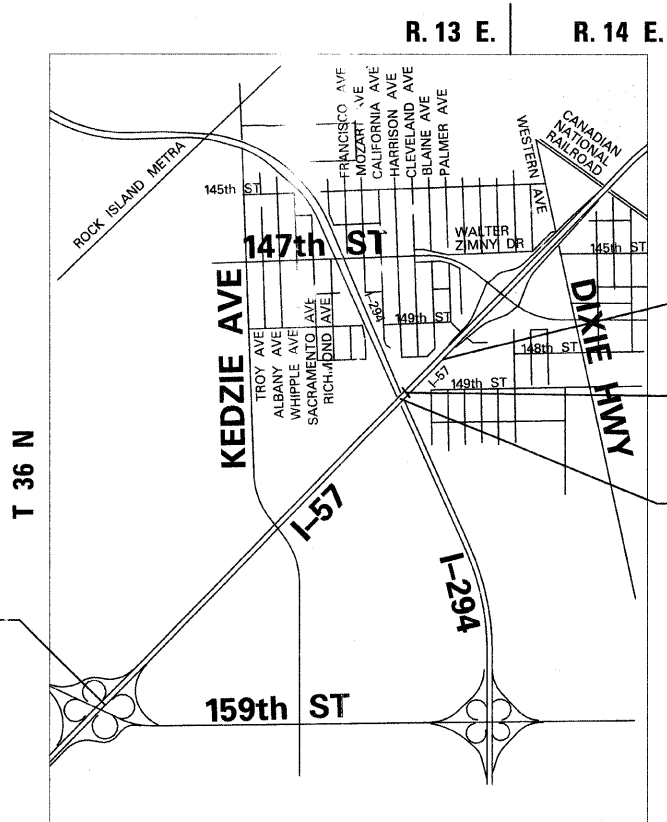
**BRIDGE CONSTRUCTION AND RECONSTRUCTION AND  
ROADWAY PAVEMENT WIDENING AND MEDIAN RECONSTRUCTION  
COOK COUNTY**

C-91-217-10

F.A.I. ROUTE:	SECTION	COUNTY	TOTAL SHEETS
57	1414.2B	COOK	516
FED. ROAD DIST. NO.		TRACT NO.	60
		* 516 + 21 = 537	
		* + 14 = 551	
		* + 3 = 554	



LOCATION OF SECTION INDICATED THROUGH



F.A.I. 57 PROJECT LIMIT  
STA. 1173+27.66  
(I-57 CENTERLINE)

F.A.I. 57 PROJECT LIMIT  
STA. 1270+85.24  
(I-57 CENTERLINE)

S.N. 016-1252

S.N. 016-1251



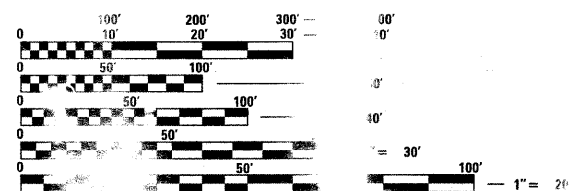
Signed: *Joel P. Marlow*  
Date: 3/12/2010



Signed: *Spiros Pantazis*  
Date: 3/12/2010

EXCLUDES  
123 thru 171  
172 thru 190  
246 thru 375

For drawings  
172, 246 thru 375



FULL SIZE ENGINEERING PLANS WILL NOT CONFORM WITH THE ABOVE SCALES. USING STANDARD SCALES WILL NOT BE MAKING MEASUREMENTS MAY BE USED.

FOR EXCAVATION INFORMATION REFER TO THE INFORMATION FOR EXCAVATION

PROJECT MANAGER: HELMUT PAZON (847) 705-4523

CONTRACT NO. 60J27

**LOCATION MAP**

GROSS LENGTH OF PROJECT = 9757.64 FT. = 1.85 MI.  
NET LENGTH OF PROJECT = 9757.64 FT. = 1.85 MI.

**TYLINT INTERNATIONAL**  
200 SOUTH WACKER DRIVE, SUITE 1400  
CHICAGO, ILLINOIS 60606  
TEL: 312-777-2900 FAX: 312-777-2901

STATE OF ILLINOIS  
DEPARTMENT OF TRANSPORTATION  
DIVISION OF HIGHWAYS

SUBMITTED: MARCH 15, 2010

*Diane M. O'Keefe*  
DEPUTY DIRECTOR OF HIGHWAYS, REGION ENGINEER

May 7, 2010  
*Scott E. Stitt, P.E.*  
ENGINEER OF DESIGN AND ENVIRONMENT

May 7, 2010  
*Christine M. Reed*  
DIRECTOR OF HIGHWAYS, CHIEF ENGINEER

*Theodore E. Hamilton*  
THEODORE E. HAMILTON  
REGISTERED PROFESSIONAL ENGINEER  
ILLINOIS  
No. 082-049  
Expires 11-30-2011

Signed: *Theodore E. Hamilton*  
Date: 3/15/10

For drawings  
123 thru 161  
190 thru 199

Rev. 5-27-10  
**PRINTED BY THE AUTHORITY  
OF THE STATE OF ILLINOIS**