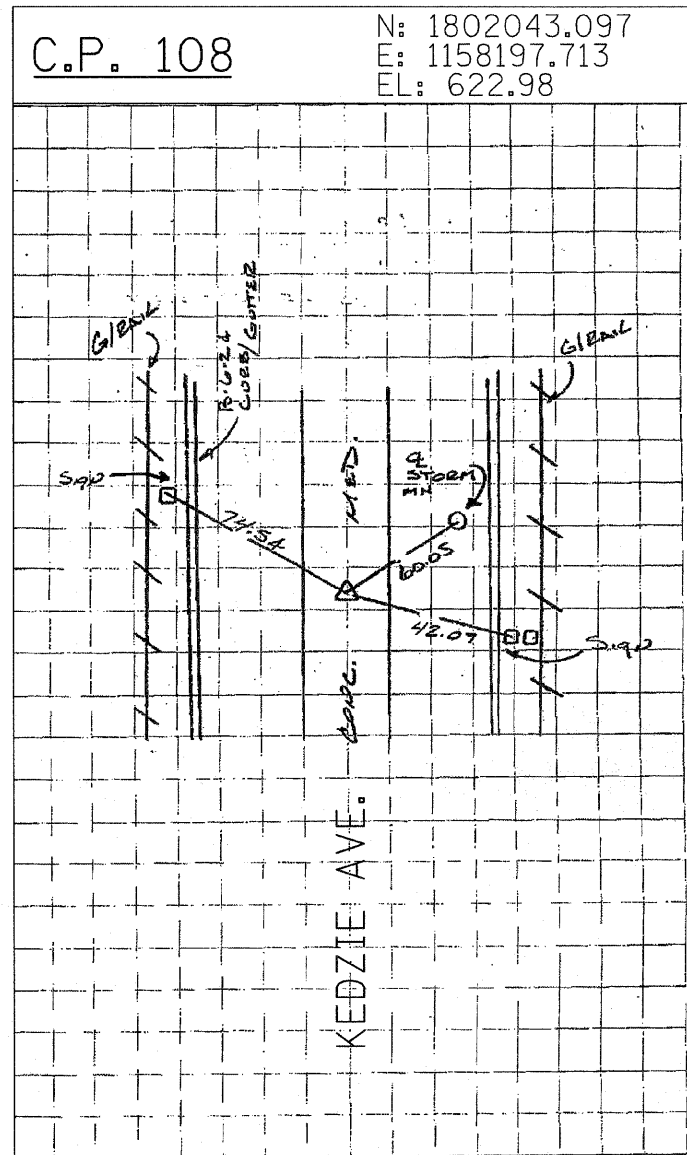
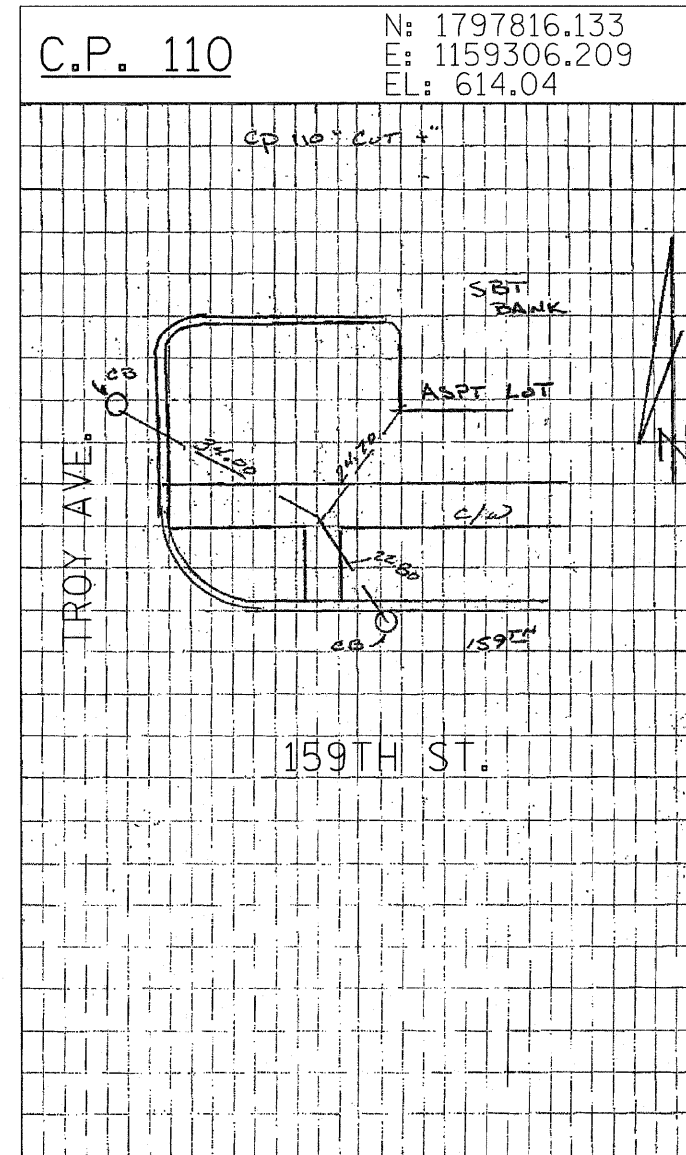


SET MAG NAIL IN NORTHERLY SHOULDER OF WESTBOUND 159TH ST. AND SOUTHBOUND I-57 TRIMUS ± 200' WESTERLY OF C I-57



SET CROSS CUT IN CONCRETE MEDIAN WITH RUMBLE STRIPS ± C KEDZIE AVE. ± 350' NORTH OF KEDZIE / I-57 BRIDGE C



CROSS CUT IN SIDEWALK AT NORTH EAST CORNER OF TROY AVENUE AND 159TH STREET.

TYLIN INTERNATIONAL	USER NAME =	DESIGNED - CAC	REVISED -	STATE OF ILLINOIS DEPARTMENT OF TRANSPORTATION	I-57 AT I-294 INTERCHANGE PROJECT		F.A.I. RTE.	SECTION	COUNTY	TOTAL SHEETS	SHEET NO.	
	PLOT SCALE =	DRAWN - CAC	REVISED -		SCALE: N.T.S.	SHEET NO. 8 OF 10 SHEETS	STA. 425+00	57	1414.2B	COOK	516	18A
	PLOT DATE =	CHECKED - JDF	REVISED -		TO STA. 3118+34.77	FED. ROAD DIST. NO. ILLINOIS FED. AID PROJECT		CONTRACT NO. 60J27				
	DATE - 3/18/2010	REVISED -										