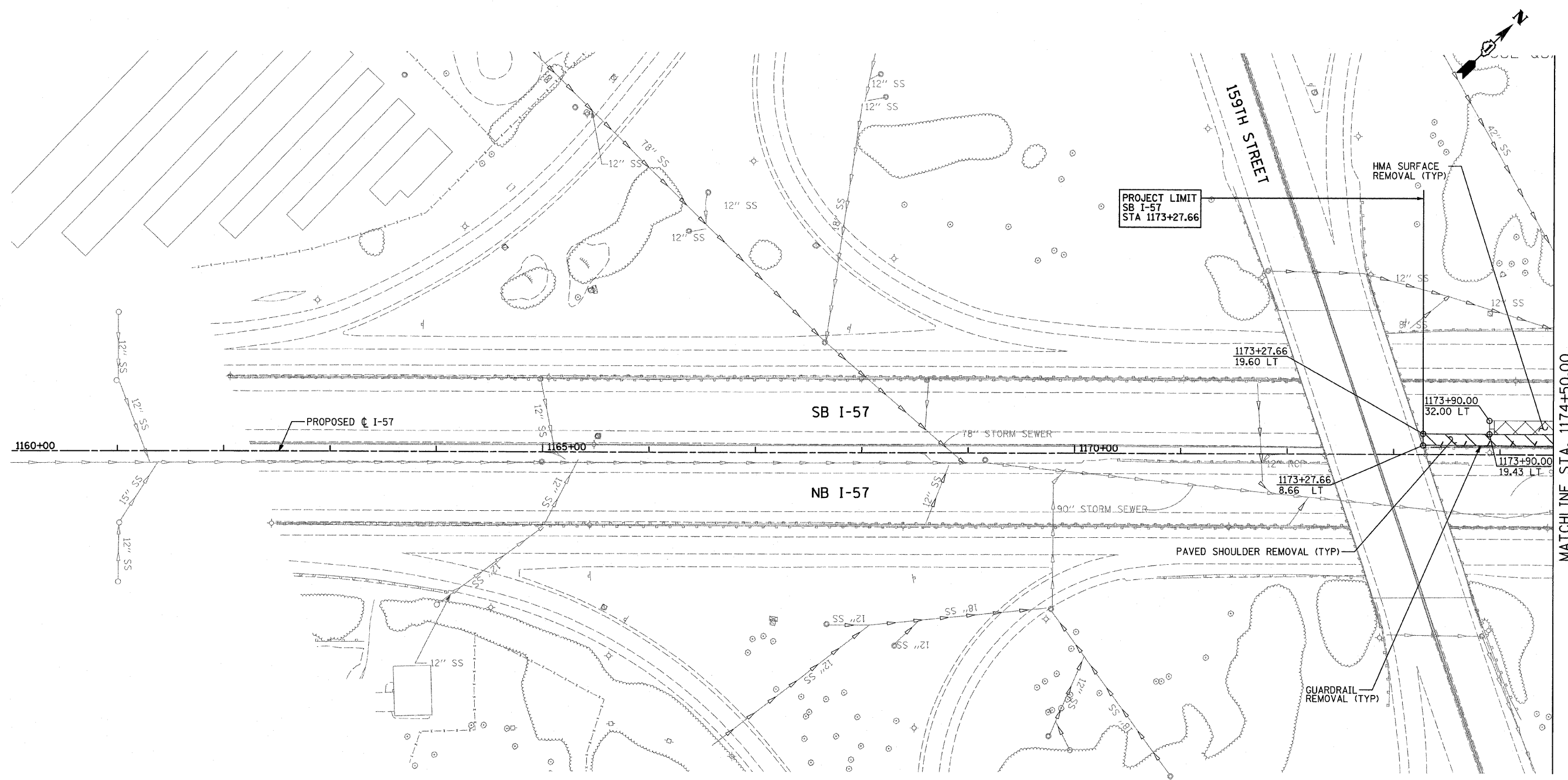


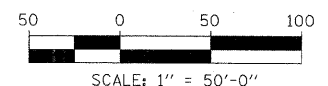
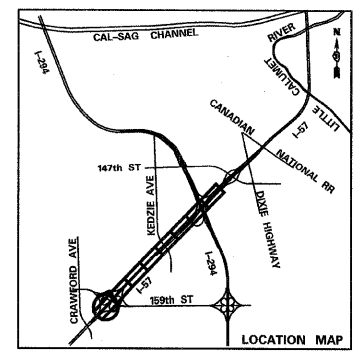
P:\602540\57-294\road\p1.157 br\PI_REM_SHT01.dgn



MATCHLINE STA. 1174+50.00

LEGEND:

- PAVED SHOULDER REMOVAL
- HOT-MIX ASPHALT SURFACE REMOVAL, 2" (SEE PLANS)
- PAVEMENT REMOVAL
- BUTT JOINT
- TREE REMOVAL (UNITS) (NO UNIT SHOWN = <6)
- TREE REMOVAL (ACRES)
- GUARDRAIL REMOVAL
- CHAIN LINK FENCE REMOVAL
- COMB CONC CURB & GUTTER REMOVAL
- CONCRETE MEDIAN BARRIER AND BASE REMOVAL
- LIMITS OF CONSTRUCTION



TYLIN INTERNATIONAL

USER NAME =	DESIGNED - CAC	REVISED - 4/29/2010
PLOT SCALE =	DRAWN - CAC	REVISED -
PLOT DATE =	CHECKED - JDF	REVISED -
	DATE - 3/18/2010	REVISED -

**STATE OF ILLINOIS
DEPARTMENT OF TRANSPORTATION**

**I-57 AT I-294 INTERCHANGE PROJECT
REMOVAL PLANS**

SCALE: 1"=50' SHEET NO. 1 OF 8 SHEETS STA. 1160+00 TO STA. 1174+50

F.A.I. RTE.	SECTION	COUNTY	TOTAL SHEETS	SHEET NO.
57	1414.2B	COOK	516	32
CONTRACT NO. 60J27				
FED. ROAD DIST. NO. ILLINOIS FED. AID PROJECT				