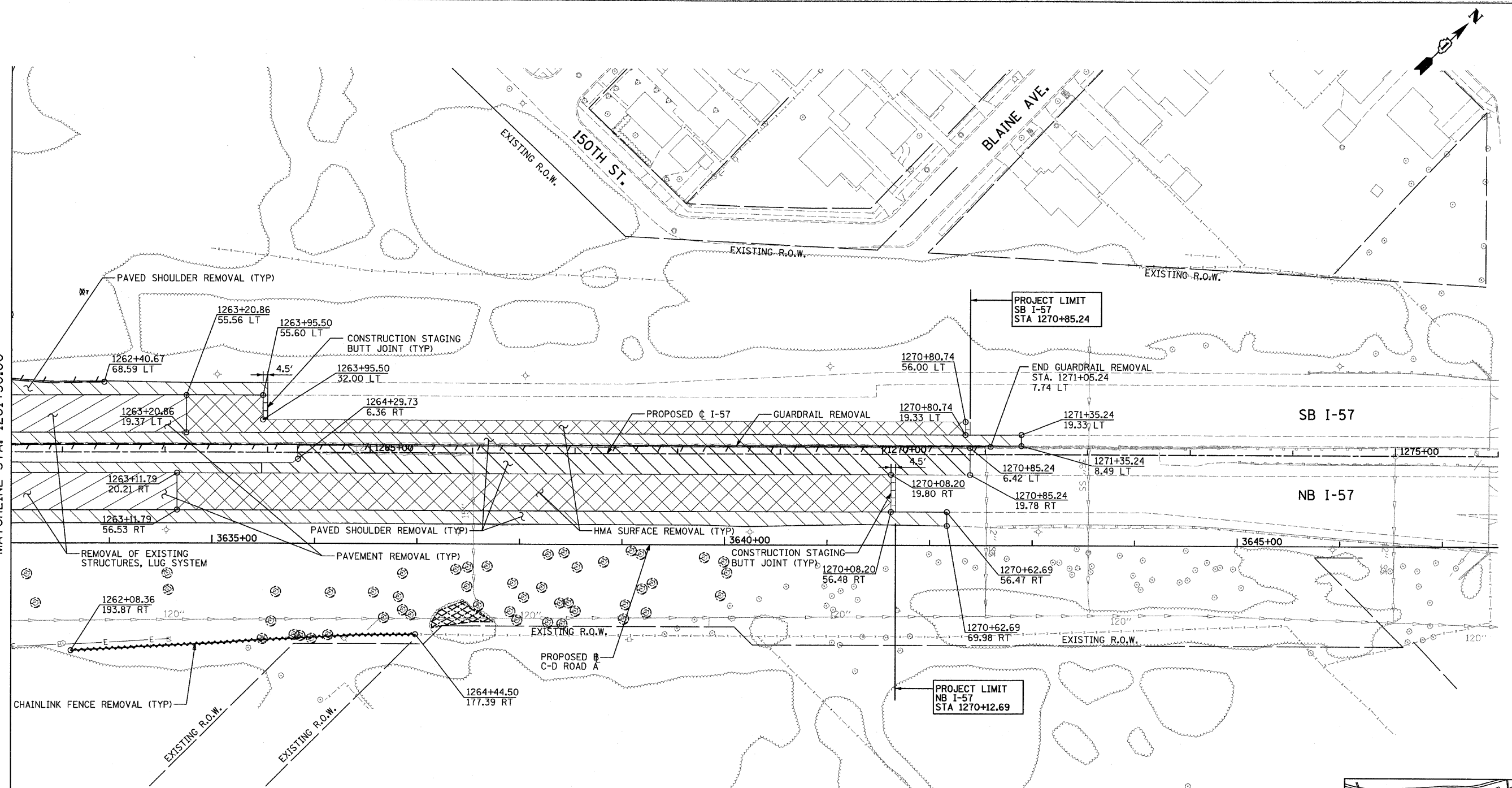


MATCHLINE STA. 1261+50.00

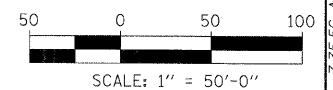
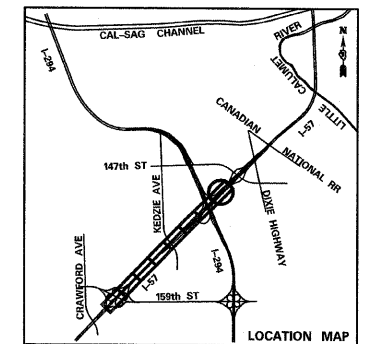


LEGEND:

- | | | | |
|--|---|--|--|
| | PAVED SHOULDER REMOVAL | | TREE REMOVAL (ACRES) |
| | HOT-MIX ASPHALT SURFACE REMOVAL, 2" (SEE PLANS) | | GUARDRAIL REMOVAL |
| | PAVEMENT REMOVAL | | CHAIN LINK FENCE REMOVAL |
| | BUTT JOINT | | COMB CONC CURB & GUTTER REMOVAL |
| | TREE REMOVAL (UNITS) (NO UNIT SHOWN = <6) | | CONCRETE MEDIAN BARRIER AND BASE REMOVAL |
| | | | LIMITS OF CONSTRUCTION |

NOTE:

TREES DEPICTED AS ⊗ WERE IDENTIFIED IN AERIAL SURVEY. UNIT DIAMETER WAS NOT IDENTIFIED. THOSE HAVE BEEN QUANTIFIED AS 0.0018 AC PER TREE LOCATION.



TYLIN INTERNATIONAL

USER NAME =	DESIGNED - CAC	REVISED - 4/29/2010
PLLOT SCALE =	DRAWN - CAC	REVISED -
PLLOT DATE =	CHECKED - JDF	REVISED -
	DATE - 3/18/2010	REVISED -

**STATE OF ILLINOIS
DEPARTMENT OF TRANSPORTATION**

**I-57 AT I-294 INTERCHANGE PROJECT
REMOVAL PLANS**

SCALE: 1"=50' SHEET NO. 8 OF 8 SHEETS STA. 1261+50 TO STA. 1276+00

F.A.I. RTE.	SECTION	COUNTY	TOTAL SHEETS	SHEET NO.
57	1414.2B	COOK	516	39
CONTRACT NO. 60J27				
FED. ROAD DIST. NO. ILLINOIS FED. AID PROJECT				