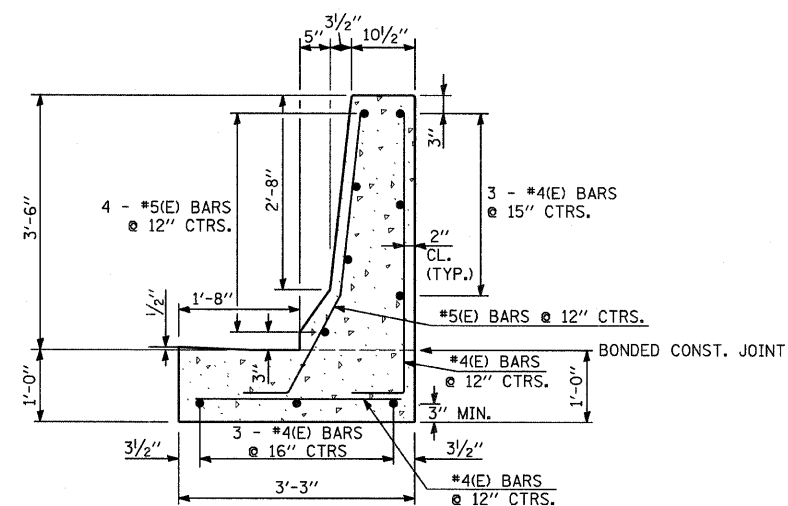


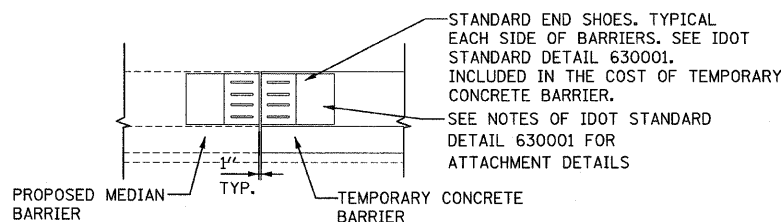
CONCRETE BARRIER,
PROPOSED CONCRETE BARRIER,
VARIABLE CROSS-SECTION, 32" HEIGHT,
& CONCRETE BARRIER BASE (SPECIAL)

* SEE PAVEMENT JOINTING AND ELEVATION SHEETS FOR SHOULDER CROSS SLOPE INFORMATION.



CONCRETE BARRIER, SINGLE FACE, TYPE F,
MODIFIED (ALONG I-294) &
CONCRETE BARRIER BASE, SINGLE FACE, TYPE F,
MODIFIED (ALONG I-294)

"SEE NOTES BELOW AND NOTES #1 - #7 FROM ISTHA STANDARD C3-01: SINGLE FACE REINFORCED CONCRETE BARRIER AND USE DOWEL BAR BENDING DIAGRAMS FOR TYPE F BARRIERS AS DEPICTED ON THE STANDARD"



TO BE USED TO CLOSE THE MEDIAN BETWEEN CONTRACT CONSTRUCTION AND WHEREVER DESIGNATED IN THE PLANS TO TIE INTO THE PROPOSED PARAPET OR MEDIAN CONCRETE BARRIER.

THE TEMPORARY CONCRETE BARRIER OR TEMPORARY CONCRETE BARRIER (SPECIAL) SHALL BE INSTALLED SUCH THAT IT IS FLUSH WITH THE PROPOSED MEDIAN BARRIER ON THE APPROACH END AND STAGGERED ON THE END TO AVOID BLUNT END CONDITIONS.

BARRIER CONNECTION DETAIL

NOTES:

1. REINFORCING BARS DESIGNATED "E" SHALL BE EPOXY COATED. ALL REINFORCING BARS INCLUDING DOWELS SHALL NOT BE PAID SEPARATELY, BUT INCLUDED IN THE COST ASSOCIATED WITH THE CONSTRUCTION OF CONCRETE BARRIERS (ALL TYPES).
2. ADDITIONAL FORMWORK, MATERIALS AND LABOR REQUIRED TO MODIFY THE BASE AND BARRIER WALL AS SHOWN SHALL NOT BE PAID FOR SEPARATELY, BUT SHALL BE INCLUDED IN THE COST OF THE ASSOCIATED PAY ITEM.

TYLIN INTERNATIONAL	USER NAME =	DESIGNED - CAC	REVISED - 4/29/2010	STATE OF ILLINOIS DEPARTMENT OF TRANSPORTATION	I-57 AT I-294 INTERCHANGE PROJECT CONCRETE BARRIER WALL DETAIL			F.A.I. RTE. 57	SECTION 1414.2B	COUNTY COOK	TOTAL SHEETS 516	SHEET NO. 60	
	PLOT SCALE =	DRAWN - CAC	REVISED -		SCALE: NTS	SHEET NO. 1 OF 1 SHEETS	STA. TO STA.	CONTRACT NO. 60J27		ILLINOIS FED. AID PROJECT			
	PLOT DATE =	CHECKED - JDF	REVISED -										
		DATE - 3/18/2010	REVISED -										