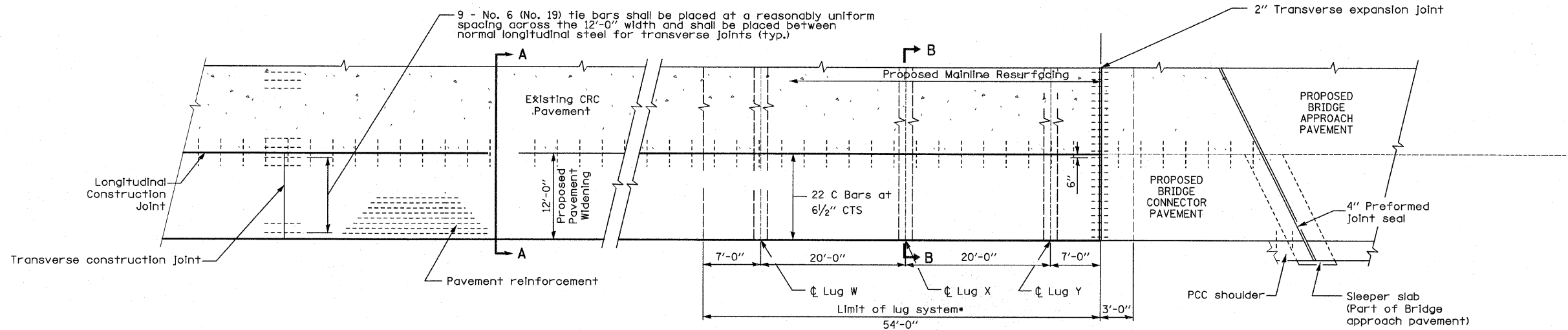
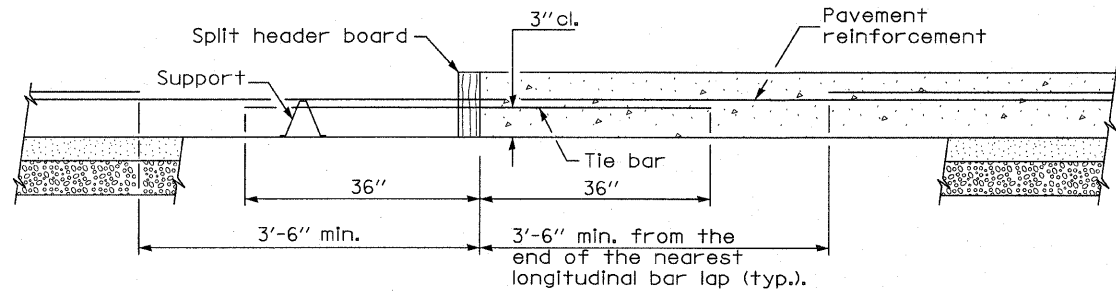


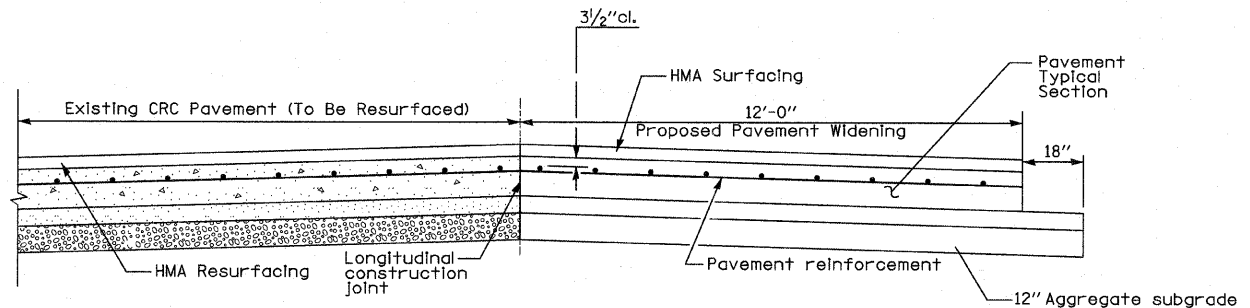
**LUG SYSTEM COMPLETE**



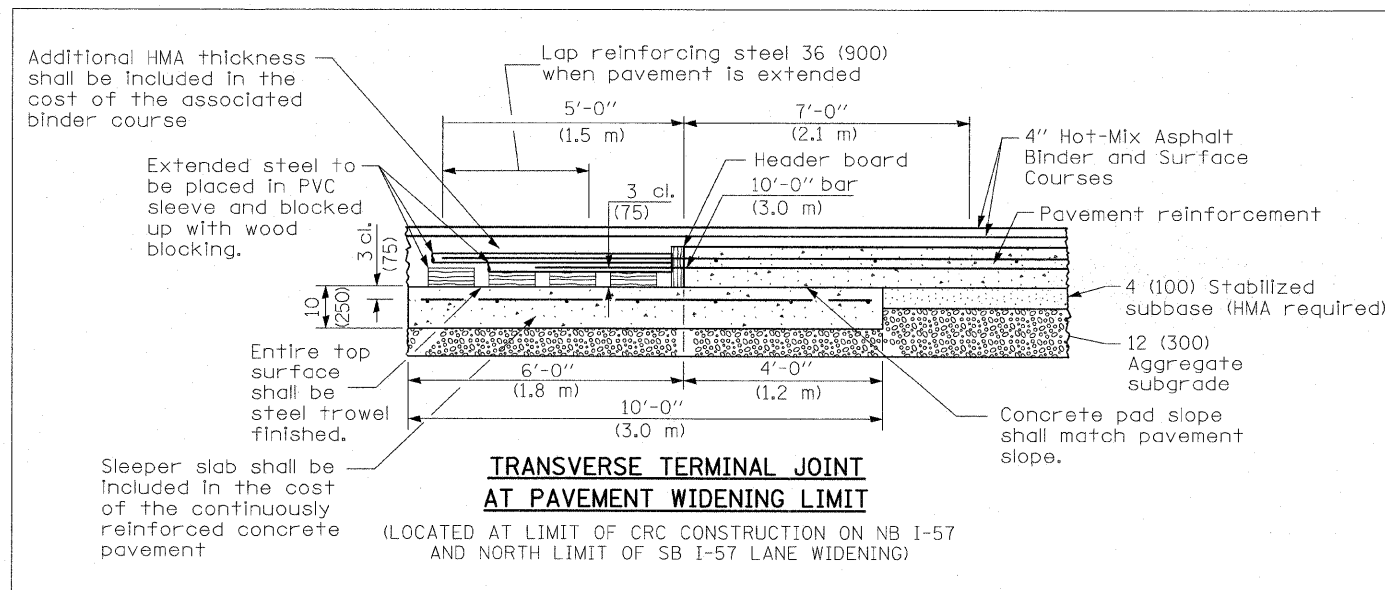
**PLAN**



**TRANSVERSE CONSTRUCTION JOINT**



**SECTION A-A**



**TRANSVERSE TERMINAL JOINT AT PAVEMENT WIDENING LIMIT**

(LOCATED AT LIMIT OF CRC CONSTRUCTION ON NB I-57 AND NORTH LIMIT OF SB I-57 LANE WIDENING)

**GENERAL NOTES**

See Standard 421001 for details of pavement reinforcement.  
See Standards 420001 and 420401 for joint details not shown.  
All dimensions are in inches unless otherwise shown.

\*Contractor must verify location of existing lugs prior to construction of proposed lug system.

|  |  |  |   |   |   |   |  |
|--|--|--|---|---|---|---|--|
| <b>TYLIN INTERNATIONAL</b><br>USER NAME =<br>PLOT SCALE =<br>PLOT DATE = | DESIGNED - JDU<br>DRAWN - JDU<br>CHECKED - JPM<br>DATE - 3/18/2010 | REVISED -<br>REVISED -<br>REVISED -<br>REVISED - | <b>STATE OF ILLINOIS<br/>DEPARTMENT OF TRANSPORTATION</b> |   | <b>I-57 AT I-294 INTERCHANGE PROJECT<br/>CRC PAVEMENT WITH LUG SYSTEM COMPLETE 12' AND<br/>TRANSVERSE TERMINAL JOINT AT PAVEMENT WIDENING</b> |   | F.A.I. RTE. 57<br>SECTION 1414.2B<br>COUNTY COOK<br>TOTAL SHEETS 516<br>SHEET NO. 63 |
|  |  |  |   | SCALE: NTS SHEET NO. 1 OF 2 SHEETS STA. TO STA. |   | CONTRACT NO. 60J27<br>ILLINOIS FED. AID PROJECT |  |
|  |  |  |   |   |   |   |  |