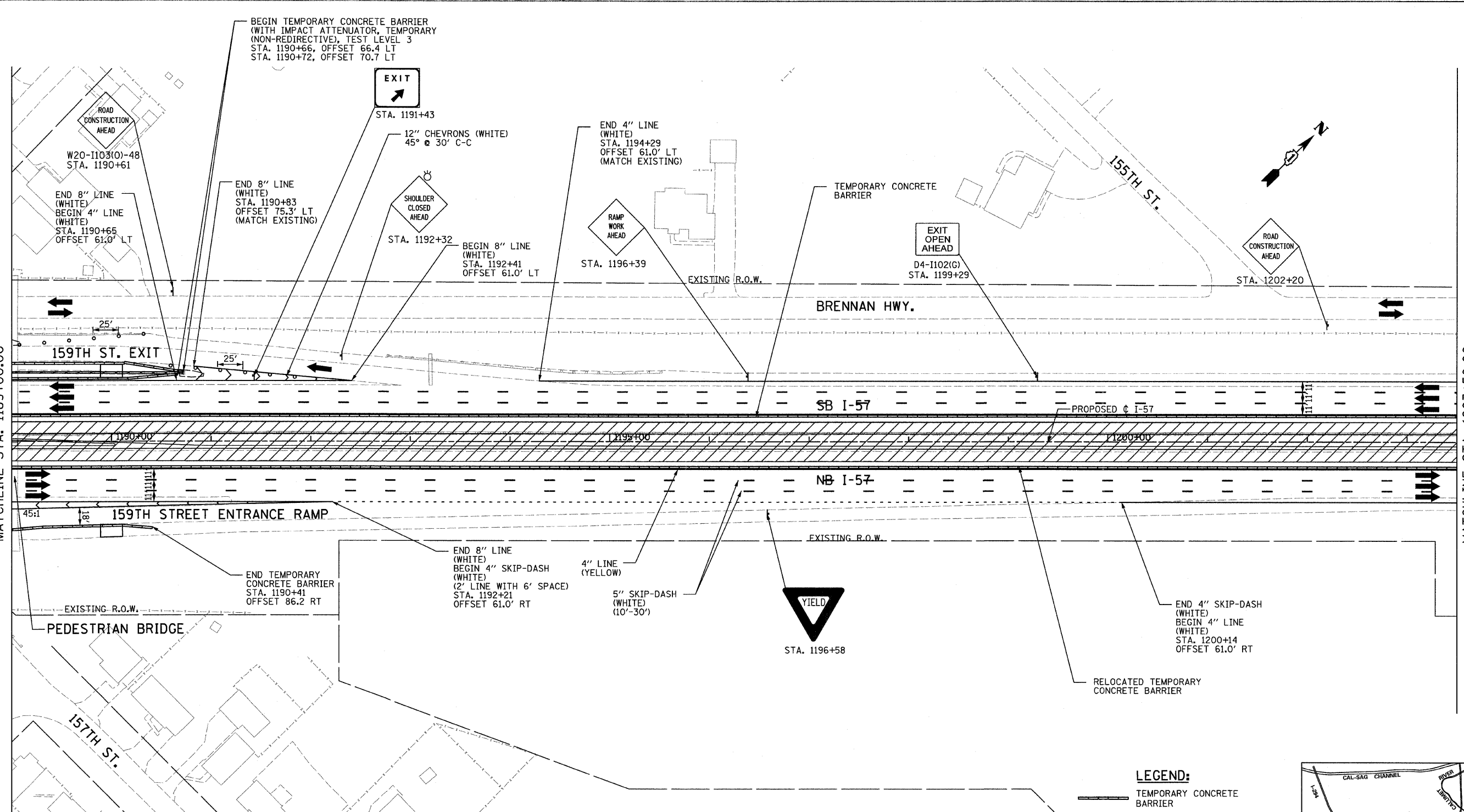
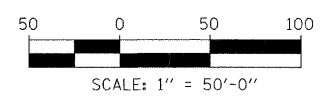


MATCHLINE STA. 1189+00.00

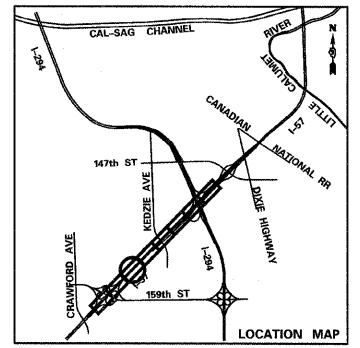
MATCHLINE STA. 1203+50.00



NOTE:
 ACCESS CONTROL FENCE SHALL BE INSTALLED AT ALL PIT LOCATIONS ADJACENT TO LOCAL FRONTAGE ROADS. A QUANTITY OF 80 LF IS PROVIDED FOR APPLICABLE LOCATIONS.



- LEGEND:**
- TEMPORARY CONCRETE BARRIER
 - TRAFFIC LANE
 - WORK ZONE
 - TEMPORARY PAVEMENT (INTERSTATE)
 - BARRICADE, TYPE III
 - DRUM WITH MONO-DIRECTIONAL STEADY BURNING LIGHT
 - ARROW BOARD



TYLIN INTERNATIONAL	USER NAME =	DESIGNED - DM	REVISED - 4/29/2010	STATE OF ILLINOIS DEPARTMENT OF TRANSPORTATION	I-57 AT I-294 INTERCHANGE PROJECT MAINTENANCE OF TRAFFIC - I-57 STAGE 2			F.A.I. RTE. = 57	SECTION = 1414.2B	COUNTY = COOK	TOTAL SHEET NO. = 516	SHEET NO. = 104	
	PLOT SCALE =	DRAWN - DM	REVISED -		SCALE: 1"=50'	SHEET NO. 3 OF 9 SHEETS	STA. 1189+00 TO STA. 1203+50	CONTRACT NO. 60J27		ILLINOIS FED. AID PROJECT			
	PLOT DATE =	CHECKED - JPM	REVISED -										
		DATE - 3/18/2010	REVISED -										