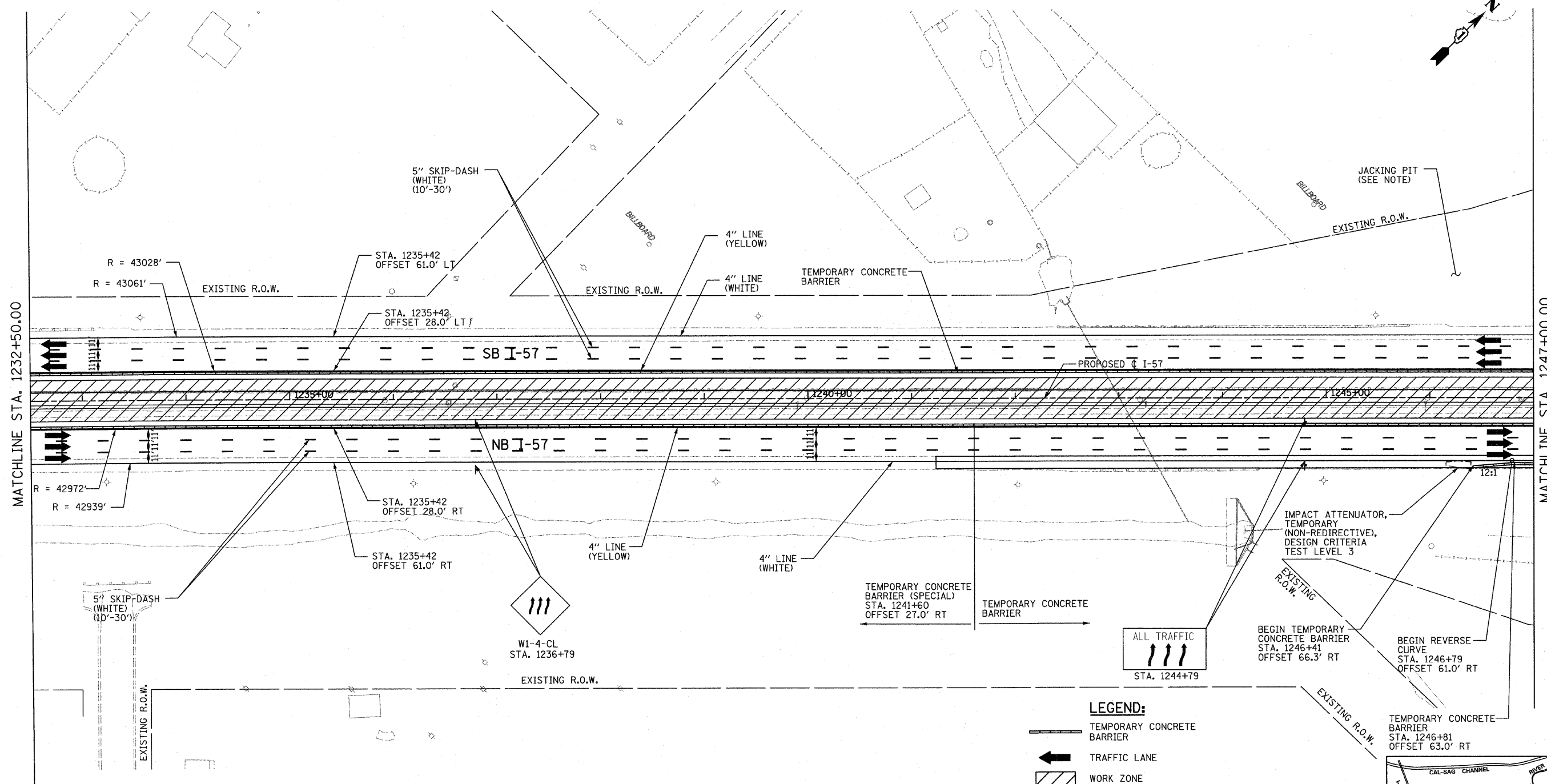


p:\602540(57-294)\road\mot\mot.project\N1\_M01\_ST2\_SHT06.dgn 3/23/2010 9:41:48 AM



MATCHLINE STA. 1232+50.00

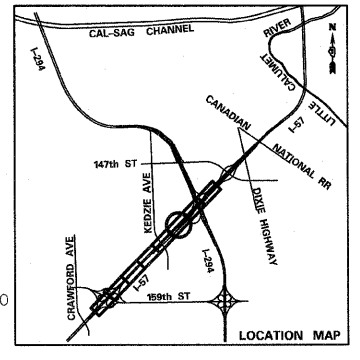
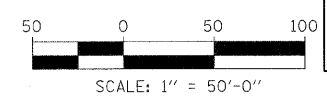
MATCHLINE STA. 1247+00.00

**LEGEND:**

- TEMPORARY CONCRETE BARRIER
- TRAFFIC LANE
- WORK ZONE
- TEMPORARY PAVEMENT (INTERSTATE)
- BARRICADE, TYPE III
- DRUM WITH MONO-DIRECTIONAL STEADY BURNING LIGHT
- ARROW BOARD

**NOTE:**

ACCESS CONTROL FENCE SHALL BE INSTALLED AT ALL PIT LOCATIONS ADJACENT TO LOCAL FRONTAGE ROADS. A QUANTITY OF 80 LF IS PROVIDED FOR APPLICABLE LOCATIONS.



<b>TYLIN INTERNATIONAL</b>	USER NAME =	DESIGNED - DM	REVISED -
	PLOT SCALE =	DRAWN - DM	REVISED -
	PLOT DATE =	CHECKED - JPM	REVISED -
		DATE - 3/18/2010	REVISED -

**STATE OF ILLINOIS  
DEPARTMENT OF TRANSPORTATION**

<b>I-57 AT I-294 INTERCHANGE PROJECT MAINTENANCE OF TRAFFIC - I-57 STAGE 2</b>	
SCALE: 1"=50'	SHEET NO. 6 OF 9 SHEETS
STA. 1232+50 TO STA. 1247+00	

F.A.I. RTE. 57	SECTION 1414.2B	COUNTY COOK	TOTAL SHEETS 516	SHEET NO. 107
FED. ROAD DIST. NO. ILLINOIS FED. AID PROJECT			CONTRACT NO. 60J27	