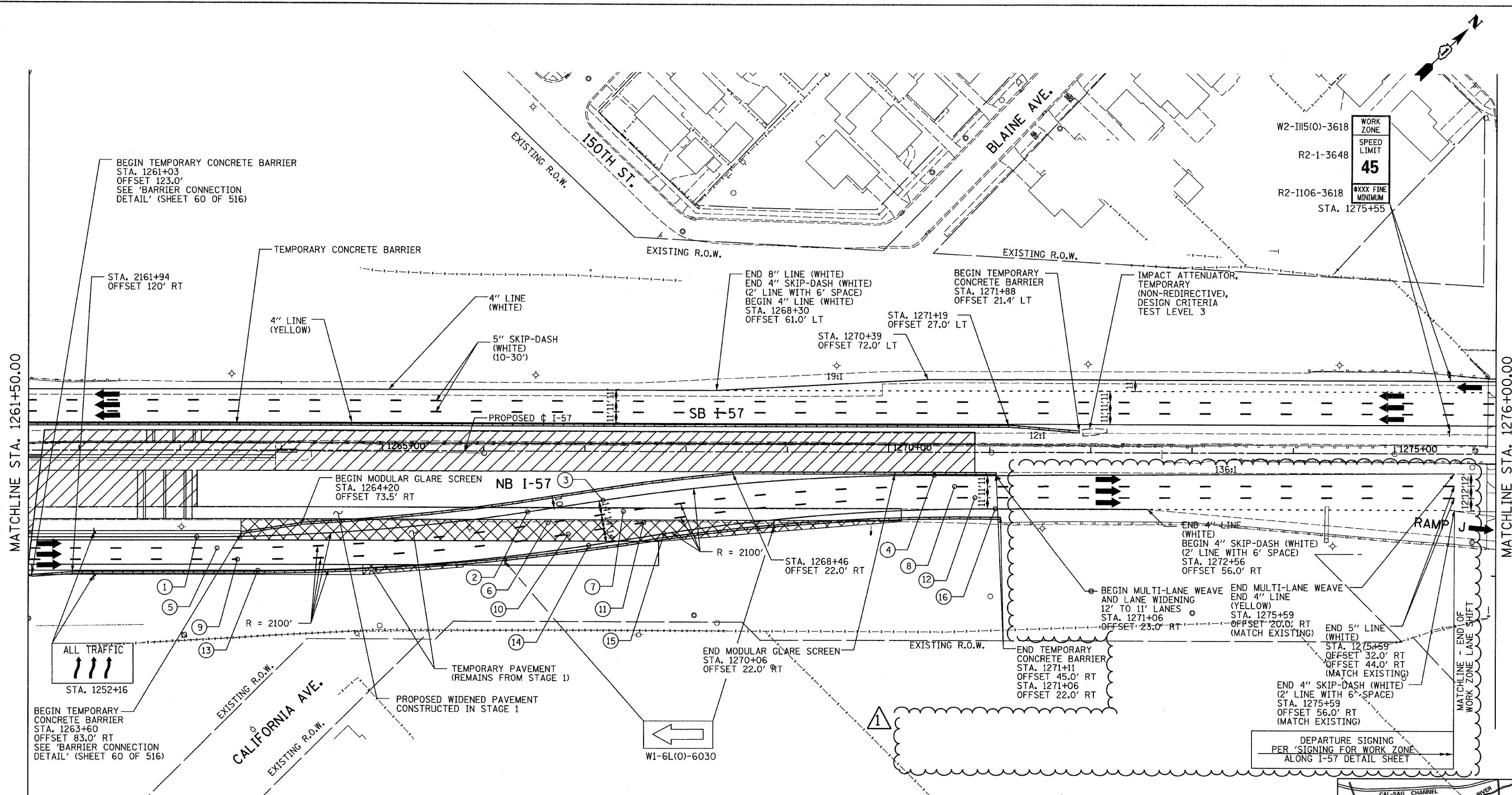


MATCHLINE STA. 1261+50.00

MATCHLINE STA. 1276+00.00



BEGIN TEMPORARY CONCRETE BARRIER
STA. 1261+03
OFFSET 123.0'
SEE 'BARRIER CONNECTION
DETAIL' (SHEET 60 OF 516)

STA. 2161+94
OFFSET 120.0' RT

4" LINE
(YELLOW)

4" LINE
(WHITE)

5" SKIP-DASH
(WHITE)
(10-30')

END 8" LINE (WHITE)
END 4" SKIP-DASH (WHITE)
(2' LINE WITH 6" SPACE)
BEGIN 4" LINE (WHITE)
STA. 1268+30
OFFSET 61.0' LT

STA. 1271+19
OFFSET 27.0' LT

BEGIN TEMPORARY
CONCRETE BARRIER
STA. 1271+88
OFFSET 21.4' LT

IMPACT ATTENUATOR,
TEMPORARY
(NON-REDIRECTIVE),
DESIGN CRITERIA
TEST LEVEL 3

WORK ZONE
SPEED LIMIT
45
XXXX FINE
MINIMUM
STA. 1275+55

BEGIN MODULAR GLARE SCREEN
STA. 1264+20
OFFSET 73.5' RT

NB I-57

STA. 1268+46
OFFSET 22.0' RT

END 4" LINE
(WHITE)
BEGIN 4" SKIP-DASH (WHITE)
(2' LINE WITH 6" SPACE)
STA. 1272+56
OFFSET 56.0' RT

BEGIN MULTI-LANE WEAVE
AND LANE WIDENING
12' TO 11' LANES
STA. 1271+06
OFFSET 23.0' RT

END MULTI-LANE WEAVE
END 4" LINE
(YELLOW)
STA. 1275+59
OFFSET 20.0' RT
(MATCH EXISTING)

END 5" LINE
(WHITE)
STA. 1275+59
OFFSET 32.0' RT
OFFSET 44.0' RT
(MATCH EXISTING)

END 4" SKIP-DASH (WHITE)
(2' LINE WITH 6" SPACE)
STA. 1275+59
OFFSET 56.0' RT
(MATCH EXISTING)

ALL TRAFFIC
STA. 1252+16

BEGIN TEMPORARY
CONCRETE BARRIER
STA. 1263+60
OFFSET 83.0' RT
SEE 'BARRIER CONNECTION
DETAIL' (SHEET 60 OF 516)

CALIFORNIA AVE.

PROPOSED WIDENED PAVEMENT
CONSTRUCTED IN STAGE 1

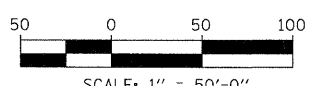
END MODULAR GLARE SCREEN
STA. 1270+06
OFFSET 22.0' RT

END TEMPORARY
CONCRETE BARRIER
STA. 1271+11
OFFSET 45.0' RT
STA. 1271+06
OFFSET 22.0' RT

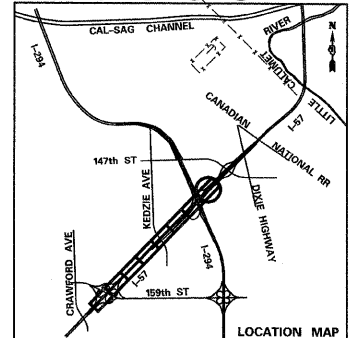
DEPARTURE SIGNING
PER 'SIGNING FOR WORK ZONE
ALONG I-57 DETAIL SHEET

LOCATION	NOTES	LOCATION	NOTES
① STA. 1263+17 OFFSET 86.0' RT	BEGIN REVERSE CURVE	⑨ STA. 1263+57 OFFSET 108.0' RT	BEGIN REVERSE CURVE
② STA. 1266+44 OFFSET 60.4' RT	END CURVE BEGIN TANGENT	⑩ STA. 1266+84 OFFSET 82.4' RT	END CURVE BEGIN TANGENT
③ STA. 1267+18 OFFSET 48.6' RT	END TANGENT BEGIN CURVE	⑪ STA. 1267+58 OFFSET 70.6' RT	END TANGENT BEGIN CURVE
④ STA. 1270+45 OFFSET 23.0' RT	END REVERSE CURVE	⑫ STA. 1270+85 OFFSET 45.0' RT	END REVERSE CURVE
⑤ STA. 1263+37 OFFSET 97.0' RT	BEGIN REVERSE CURVE	⑬ STA. 1263+77 OFFSET 119.0' RT	BEGIN REVERSE CURVE
⑥ STA. 1266+64 OFFSET 71.4' RT	END CURVE BEGIN TANGENT	⑭ STA. 1267+04 OFFSET 93.4' RT	END CURVE BEGIN TANGENT
⑦ STA. 1267+38 OFFSET 59.6' RT	END TANGENT BEGIN CURVE	⑮ STA. 1267+78 OFFSET 81.6' RT	END TANGENT BEGIN CURVE
⑧ STA. 1270+65 OFFSET 34.0' RT	END REVERSE CURVE	⑯ STA. 1271+06 OFFSET 56.0' RT	END REVERSE CURVE

NOTES:
1. TEMPORARY RAISED REFLECTIVE PAVEMENT MARKERS SHALL BE PLACED BETWEEN LANES ALONG NB I-57 BETWEEN STA. 1246+81 AND STA. 1272+30.



- LEGEND:**
- TEMPORARY CONCRETE BARRIER
 - TRAFFIC LANE
 - WORK ZONE
 - TEMPORARY PAVEMENT (INTERSTATE)
 - BARRICADE, TYPE III
 - DRUM WITH MONO-DIRECTIONAL STEADY BURNING LIGHT
 - ARROW BOARD



TYLIN INTERNATIONAL	USER NAME =	DESIGNED - DM	REVISED - ADDENDUM 1 05/24/10	STATE OF ILLINOIS DEPARTMENT OF TRANSPORTATION	I-57 AT I-294 INTERCHANGE PROJECT MAINTENANCE OF TRAFFIC - I-57 STAGE 2			F.A.T. RTE. 57	SECTION 1414.2B	COUNTY COOK	TOTAL SHEETS 516	SHEET NO. 109
	PLOT SCALE =	CHECKED - JPM	REVISED -		SCALE: 1"=50'	SHEET NO. 8 OF 9 SHEETS	STA. 1261+50 TO STA. 1276+00	FED. ROAD DIST. NO. ILLINOIS FED. AID PROJECT		CONTRACT NO. 60J27		
	PLOT DATE =	DATE - 3/18/2010	REVISED -									