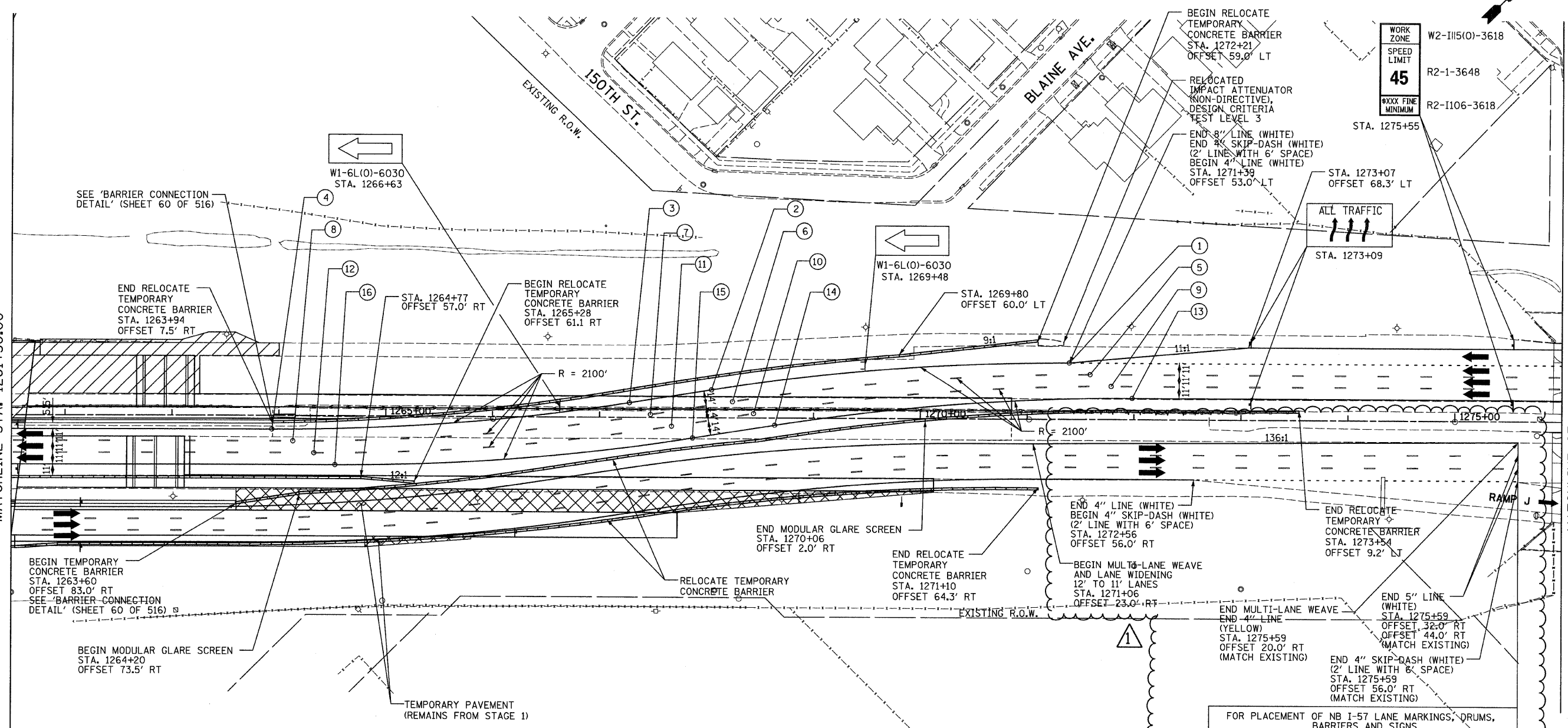


MATCHLINE STA. 1261+50.00

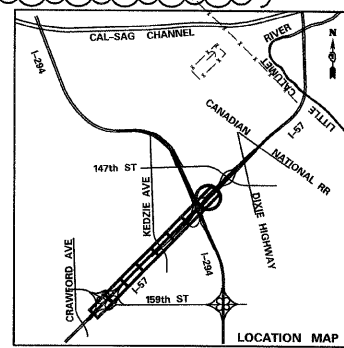
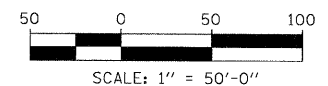
MATCHLINE STA. 1276+00.00



LOCATION	NOTES	LOCATION	NOTES
① STA. 1271+39 OFFSET 53.0' LT	BEGIN REVERSE CURVE	⑨ STA. 1271+79 OFFSET 31.0' LT	BEGIN REVERSE CURVE
② STA. 1268+05 OFFSET 26.2' LT	END CURVE BEGIN TANGENT	⑩ STA. 1268+44 OFFSET 4.2' LT	END CURVE BEGIN TANGENT
③ STA. 1267+28 OFFSET 13.8' LT	END TANGENT BEGIN CURVE	⑪ STA. 1267+67 OFFSET 8.2' RT	END TANGENT BEGIN CURVE
④ STA. 1263+93 OFFSET 13.0' RT	END REVERSE CURVE	⑫ STA. 1264+33 OFFSET 35.0' RT	END REVERSE CURVE
⑤ STA. 1271+59 OFFSET 42.0' LT	BEGIN REVERSE CURVE	⑬ STA. 1271+98 OFFSET 20.0' LT	BEGIN REVERSE CURVE
⑥ STA. 1268+24 OFFSET 15.2' LT	END CURVE BEGIN TANGENT	⑭ STA. 1268+64 OFFSET 6.8' RT	END CURVE BEGIN TANGENT
⑦ STA. 1267+48 OFFSET 2.8' LT	END TANGENT BEGIN CURVE	⑮ STA. 1267+87 OFFSET 19.2' RT	END TANGENT BEGIN CURVE
⑧ STA. 1264+13 OFFSET 24.0' RT	END REVERSE CURVE	⑯ STA. 1264+53 OFFSET 46.0' RT	END REVERSE CURVE

- NOTES:**
- FOR PLACEMENT OF NB I-57 LANE MARKINGS, DRUMS AND SIGNS FROM STA. 1239+42 TO STA. 1272+30, SEE MAINTENANCE OF TRAFFIC - STAGE 2 SHEETS.
 - TEMPORARY RAISED REFLECTIVE PAVEMENT MARKERS SHALL BE PLACED BETWEEN LANES ALONG NB I-57 BETWEEN STA. 1246+81 AND STA. 1272+30. THEY SHALL BE PLACED BETWEEN LANES ALONG SB I-57 BETWEEN STA. 1247+45 AND STA. 1271+98.

- LEGEND:**
- TEMPORARY CONCRETE BARRIER
 - TRAFFIC LANE
 - WORK ZONE
 - TEMPORARY PAVEMENT (INTERSTATE)
 - BARRICADE, TYPE III
 - DRUM WITH MONO-DIRECTIONAL STEADY BURNING LIGHT
 - ARROW BOARD



WORK ZONE
SPEED LIMIT
45
***XX FINE MINIMUM

W2-II15(O)-3618
R2-1-3648
R2-II06-3618

STA. 1275+55

ALL TRAFFIC

STA. 1273+07
OFFSET 68.3' LT

STA. 1273+09

FOR PLACEMENT OF NB I-57 LANE MARKINGS, DRUMS, BARRIERS AND SIGNS FROM STA. 1239+42 TO STA. 1272+30, SEE MAINTENANCE OF TRAFFIC - STAGE 2 SHEETS.