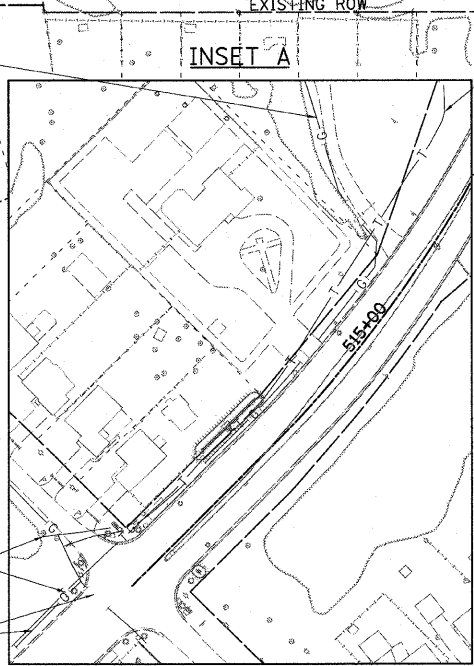
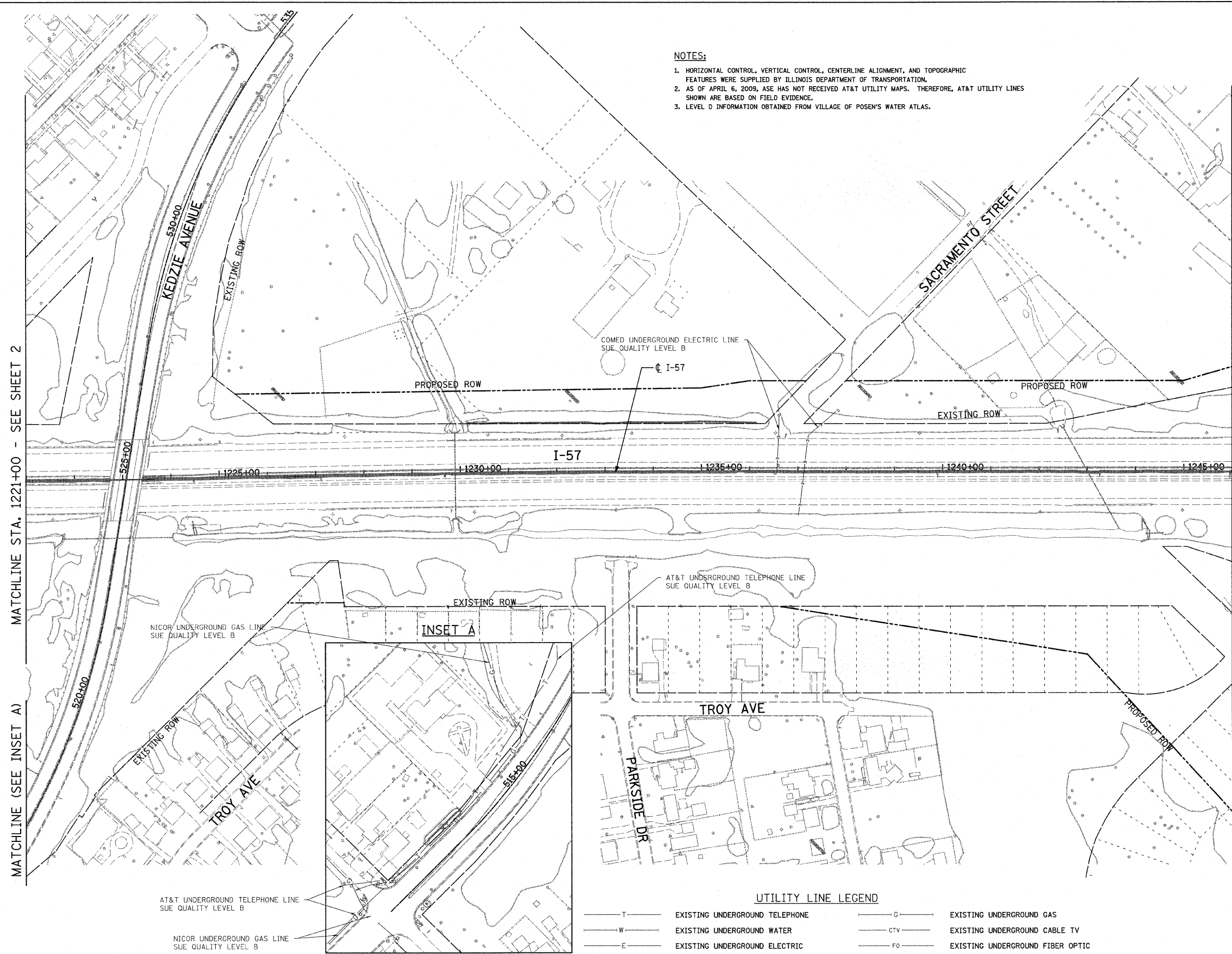
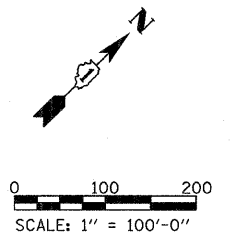


- NOTES:**
- HORIZONTAL CONTROL, VERTICAL CONTROL, CENTERLINE ALIGNMENT, AND TOPOGRAPHIC FEATURES WERE SUPPLIED BY ILLINOIS DEPARTMENT OF TRANSPORTATION.
 - AS OF APRIL 6, 2009, ASE HAS NOT RECEIVED AT&T UTILITY MAPS. THEREFORE, AT&T UTILITY LINES SHOWN ARE BASED ON FIELD EVIDENCE.
 - LEVEL D INFORMATION OBTAINED FROM VILLAGE OF POSEN'S WATER ATLAS.



UTILITY LINE LEGEND

— T —	EXISTING UNDERGROUND TELEPHONE	— G —	EXISTING UNDERGROUND GAS
— W —	EXISTING UNDERGROUND WATER	— CTV —	EXISTING UNDERGROUND CABLE TV
— E —	EXISTING UNDERGROUND ELECTRIC	— FO —	EXISTING UNDERGROUND FIBER OPTIC

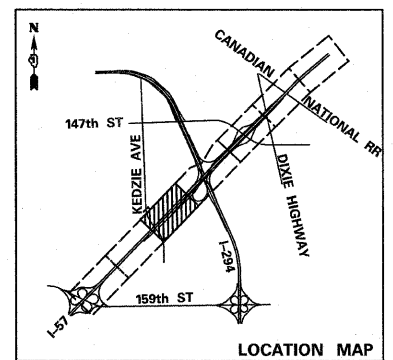
STATE OF ILLINOIS)
COUNTY OF COOK) S.S.

UTILITY(IES) SHOWN HEREON HAVE BEEN INVESTIGATED BY ASE IN ACCORDANCE WITH SUE INDUSTRY STANDARDS QUALITY LEVEL B (QLB). ALL OTHER INFORMATION SHOWN HAS BEEN PROVIDED BY OTHERS.

FIELD WORK WAS PERFORMED BETWEEN THE 29TH OF JANUARY AND 6TH DAY OF APRIL, A.D., 2009.

IN WITNESS WHEREOF, I HAVE HEREUNTO SET MY HAND AND SEAL THIS 9TH DAY OF APRIL A.D., 2009. CHICAGO, IL.

STEVEN M. RIENS - ILLINOIS PROFESSIONAL ENGINEER NUMBER 62-044619
MY LICENSE EXPIRES 11/30/2009



USER NAME =	DESIGNED -	REVISED -
PLOT SCALE =	DRAWN -	REVISED -
PLOT DATE =	CHECKED -	REVISED -
	DATE - 3/18/2010	REVISED -

**STATE OF ILLINOIS
DEPARTMENT OF TRANSPORTATION**

I-57 AT I-294 INTERCHANGE PROJECT			
SUBSURFACE UTILITY LOCATIONS			
SCALE:	SHEET NO. 3 OF 10 SHEETS	STA. 1221+00 TO STA. 1246+00	

F.A.I. RTE. 57	SECTION 1414.2B	COUNTY COOK	TOTAL SHEETS 516	SHEET NO. 164
FED. ROAD DIST. NO. ILLINOIS FED. AID PROJECT			CONTRACT NO. 60J27	