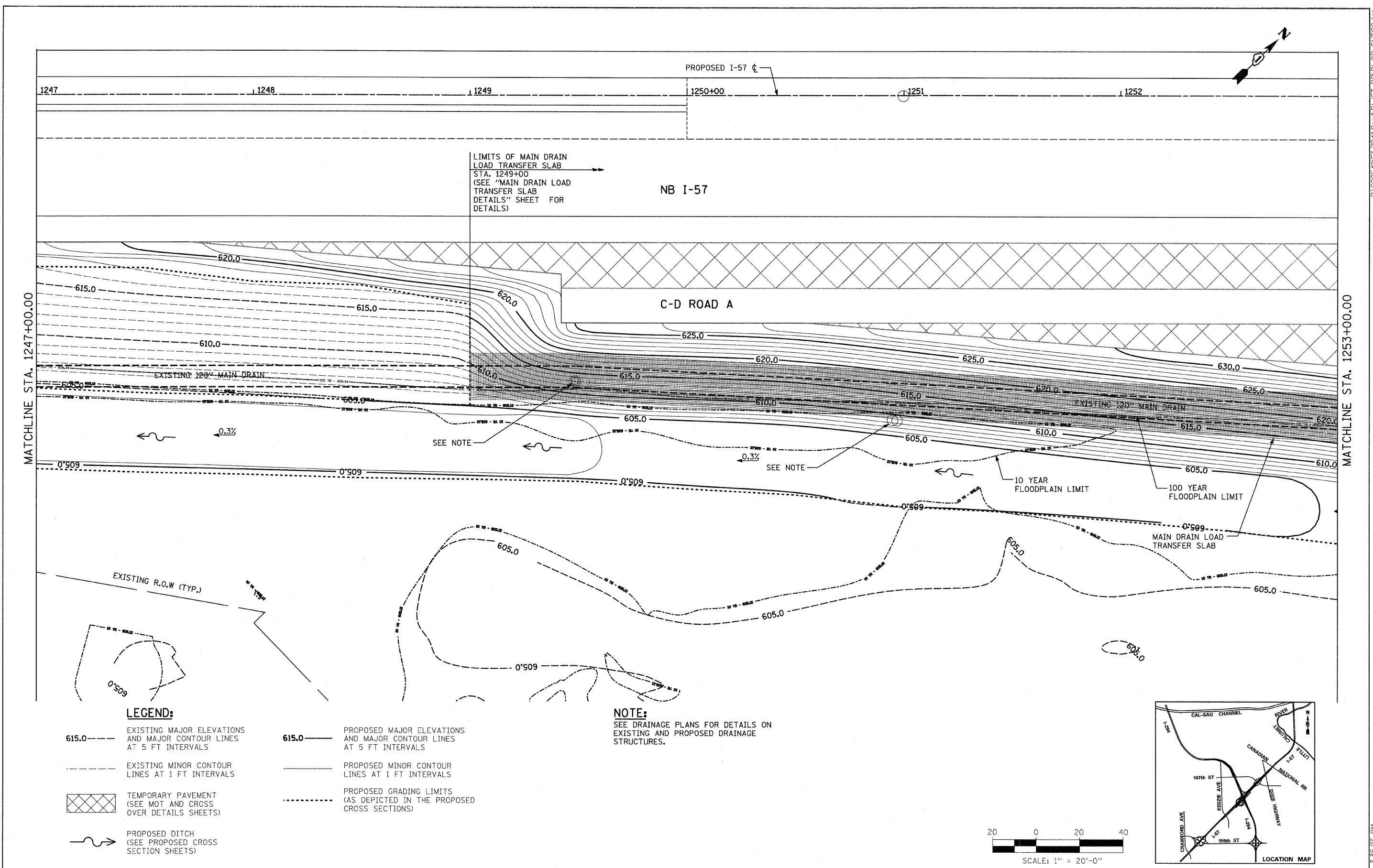


P:\602540\57-294\Road\PI_157_BR\PI_LP_SHT02.dgn

3:55:27 PM
4/28/2010



LIMITS OF MAIN DRAIN
LOAD TRANSFER SLAB
STA. 1249+00
(SEE "MAIN DRAIN LOAD
TRANSFER SLAB
DETAILS" SHEET FOR
DETAILS)

NB I-57

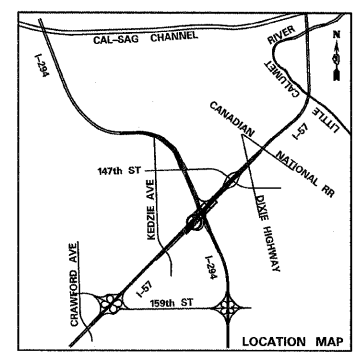
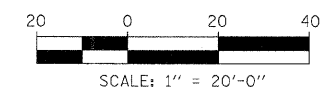
C-D ROAD A

LEGEND:

- 615.0 --- EXISTING MAJOR ELEVATIONS AND MAJOR CONTOUR LINES AT 5 FT INTERVALS
- 615.0 --- PROPOSED MAJOR ELEVATIONS AND MAJOR CONTOUR LINES AT 5 FT INTERVALS
- EXISTING MINOR CONTOUR LINES AT 1 FT INTERVALS
- PROPOSED MINOR CONTOUR LINES AT 1 FT INTERVALS
- TEMPORARY PAVEMENT (SEE MOT AND CROSS OVER DETAILS SHEETS)
- PROPOSED GRADING LIMITS (AS DEPICTED IN THE PROPOSED CROSS SECTIONS)
- PROPOSED DITCH (SEE PROPOSED CROSS SECTION SHEETS)

NOTE:

SEE DRAINAGE PLANS FOR DETAILS ON EXISTING AND PROPOSED DRAINAGE STRUCTURES.



TYLIN INTERNATIONAL	USER NAME =	DESIGNED - JDF	REVISED - 4/29/2010	STATE OF ILLINOIS DEPARTMENT OF TRANSPORTATION	I-57 AT I-294 INTERCHANGE PROJECT PROPOSED GRADING PLAN AND 120" PIPE PROTECTION ALONG NB I-57			F.A.I. RTE. 57	SECTION 1414.2B	COUNTY COOK	TOTAL SHEETS 516	SHEET NO. 173	
	PLOT SCALE =	CHECKED - JPM	REVISED -		SCALE: 1"=20'	SHEET NO. 2 OF 7 SHEETS	STA. 1247+00 TO STA. 1253+00	CONTRACT NO. 60J27					
	PLOT DATE =	DATE - 3/18/2010	REVISED -		FED. ROAD DIST. NO. ILLINOIS FED. AID PROJECT								
	P:\602540\57-294\Road\PI_157_BR\PI_LP_SHT02.dan												