

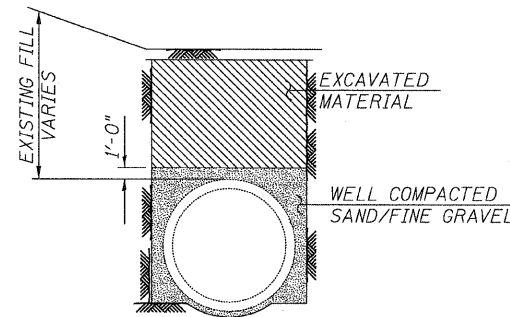
STATE OF ILLINOIS
DEPARTMENT OF TRANSPORTATION

NOTES

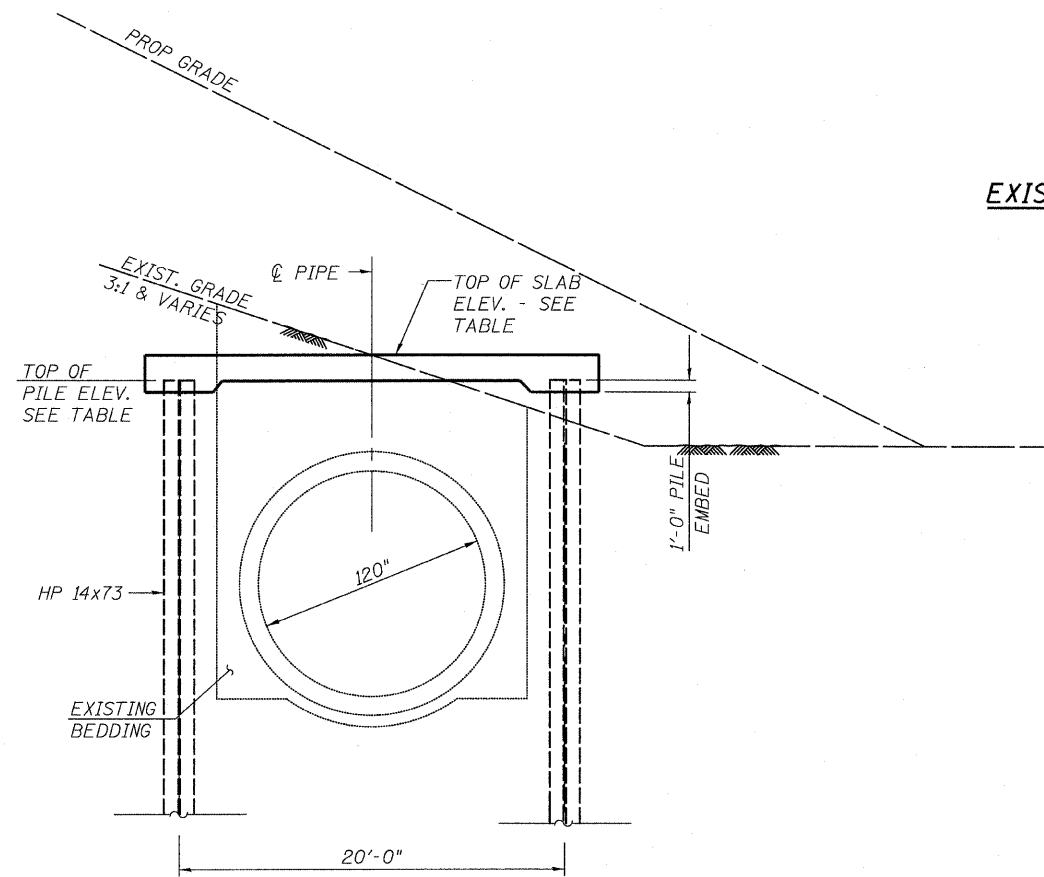
1. MINIMUM REQUIRED COMPRESSIVE STRENGTH OF CONCRETE SHALL BE 3500 psi PRIOR TO BACKFILLING.
2. SLAB JOINTING:
 - a. 1/2" PREFORMED JOINT FILLER SHALL BE INSTALLED AT ALL EXPANSION JOINT LOCATIONS.
 - b. ANY OTHER TRANSVERSE CONSTRUCTION JOINTS PLACED AT THE CONTRACTORS OPTION SHALL BE KEYPED AND BONDED
3. MIN LAP LENGTHS:
 - #4 BARS = 2'-5"
 - #7 BARS = 4'-10"
4. THE DISTANCE FROM THE SLAB EXPANSION JOINT TO ADJACENT PILE SHALL NOT EXCEED 1/2 THE PILE SPACING.
5. THE PILES SHALL BE DRIVEN THROUGH 20" DIAMETER PRECORED HOLES EXTENDING TO ELEVATION 593 ACCORDING TO ARTICLE 512.09(G) OF THE STANDARD SPECIFICATIONS. COST INCLUDED WITH DRIVING PILES.
6. THE LOCATION OF THE 120" STORM SEWER WAS TAKEN FROM EXISTING PLANS. THE CONTRACTOR SHALL VERIFY ITS LOCATION PRIOR TO DRIVING THE PILES. THE COST SHALL BE INCLUDED IN THE BID ITEM FOR DRIVING PILES.
7. REINFORCEMENT BARS SHALL CONFORM TO THE REQUIREMENTS OF ASTM A 706 GR. 60. SEE SPECIAL PROVISIONS.
8. DRIVE 1 TEST PILE ON EACH SIDE OF I-294.

DESIGN STRESSES

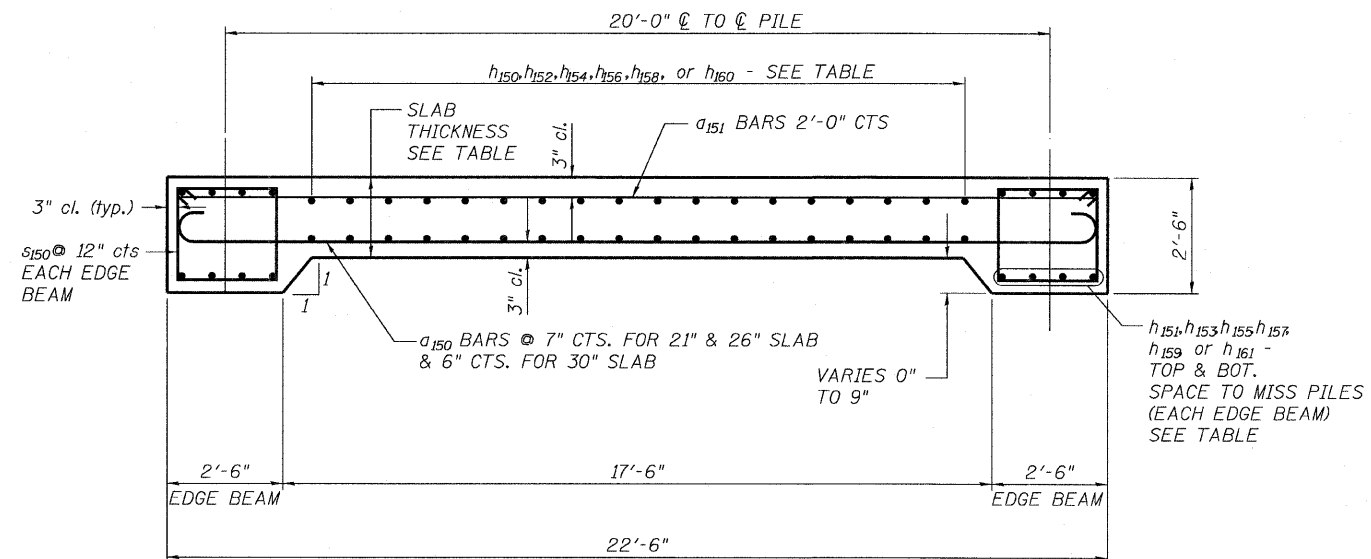
$F'_c = 3500$ psi
 $F_y = 60,000$ (REINFORCEMENT)



EXISTING BEDDING DETAIL



**120" RCP CLASS III STORM SEWER
LOAD TRANSFER SLAB PILE SUPPORTED**



SECTION THRU SLAB

MAIN DRAIN LOAD TRANSFER SLAB DETAILS - I

TYLIN INTERNATIONAL	DESIGNED - SP	REVISIONS								
	CHECKED - PDF	NAME	DATE							
	DRAWN - JMA									
	CHECKED - SP, PDF									
	DATE - 03/18/10		04/29/10							
						F.A.I RTE.	SECTION	COUNTY	TOTAL SHEETS	SHEET NO.
						57	1414.2B	COOK	516	179
						CONTRACT NO. 60J27				
						FED. ROAD DIST. NO. 1 ILLINOIS FED. AID PROJECT				