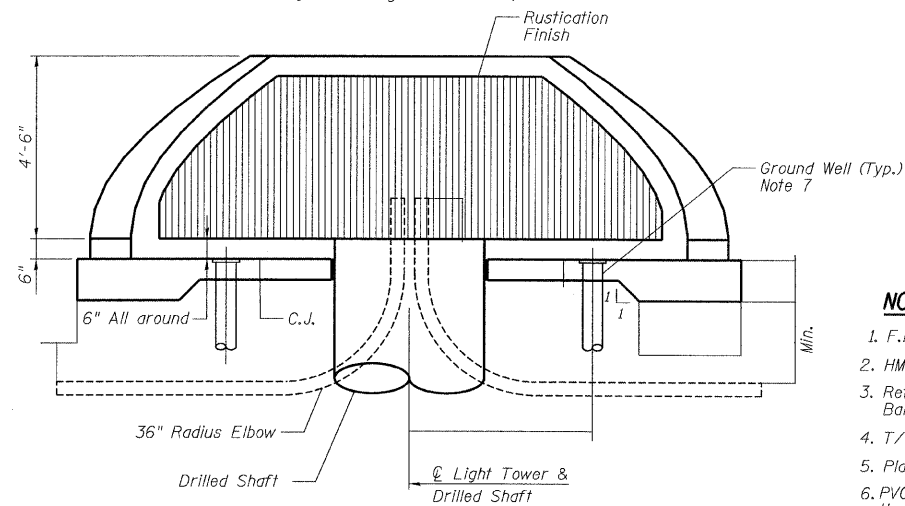


PLAN VIEW

Place Bars $w_1(E)$ thru $w_5(E)$ @ 12" cts., Bott. of Pad

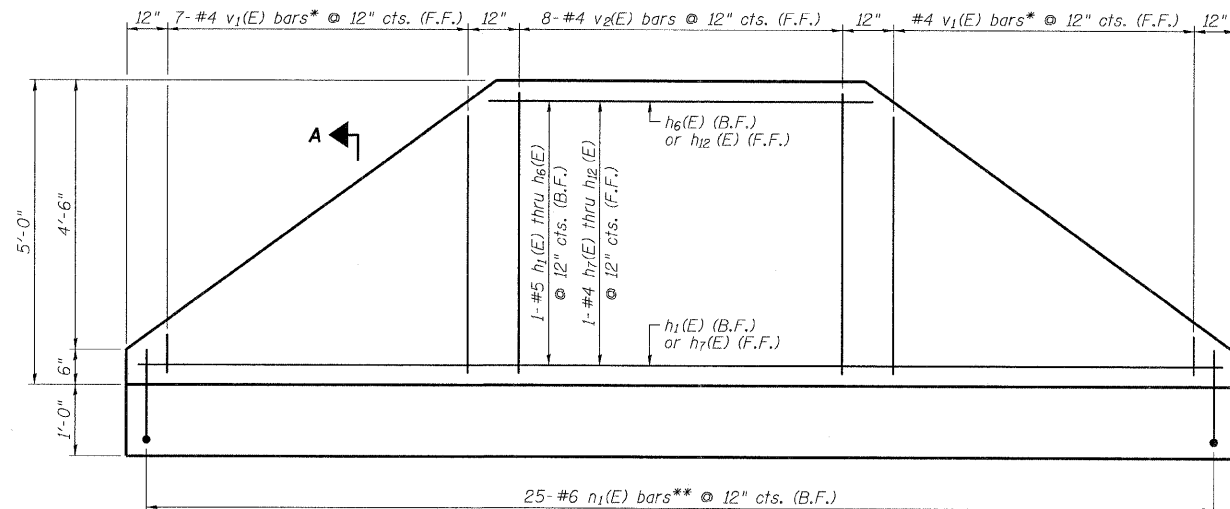


ELEVATION VIEW

(HMLT not shown for clarity)

NOTES

1. F.F. and B.F. denote Front Face and Back Face, respectively.
2. HMLT denotes High Mast Light Tower.
3. Refer to HMLT Service Pad, Special & Retaining Wall Details 2 for Bar Bending Diagrams, Bill of Material, Bar Sections and Details.
4. T/Wall slope is constant along the arc of any given radius.
5. Place horizontal tails of $n_1(E)$ bars radially.
6. PVC sleeves must be extended 6 inches beyond the edge of the concrete pad (PVC sleeve shall be included in the cost of Light Tower Service Pad, Special).
7. Adjust service pad reinforcement to miss wells. Any necessary vertical adjustments shall be included in the cost of Light Tower Service Pad, Special.



5'-0" RETAINING WALL ELEVATION (PROJECTED)

(Looking at F.F.)

- * Cut to fit, use remainder of bars at opposite end of wall. See Cutting Diagram (Detail sheet 2 of 2)
- ** Cut to fit where necessary, discard excess.

TYLIN INTERNATIONAL	USER NAME =	DESIGNED -	REVISED Δ - ADDENDUM 1 05/24/10
	PLOT SCALE =	DRAWN -	REVISED -
	PLOT DATE =	CHECKED -	REVISED -
		DATE - 3/18/2010	REVISED -

**STATE OF ILLINOIS
DEPARTMENT OF TRANSPORTATION**

**I-57 AT I-294 INTERCHANGE PROJECT
HIGH MAST LIGHT TOWER SERVICE PAD & RETAINING WALL DETAILS**

SCALE: SHEET NO. 1 OF 2 SHEETS STA. TO STA.

F.A.I. RTE.	SECTION	COUNTY	TOTAL SHEETS	SHEET NO.
57	1414.2B	COOK	516	209#
CONTRACT NO. 60J27			ILLINOIS FED. AID PROJECT	

NEW SHEET SHEET E20