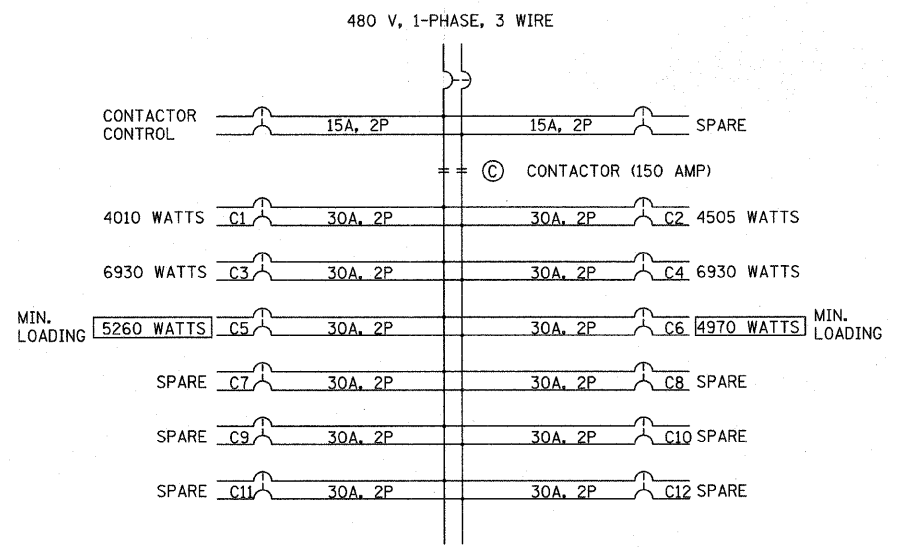
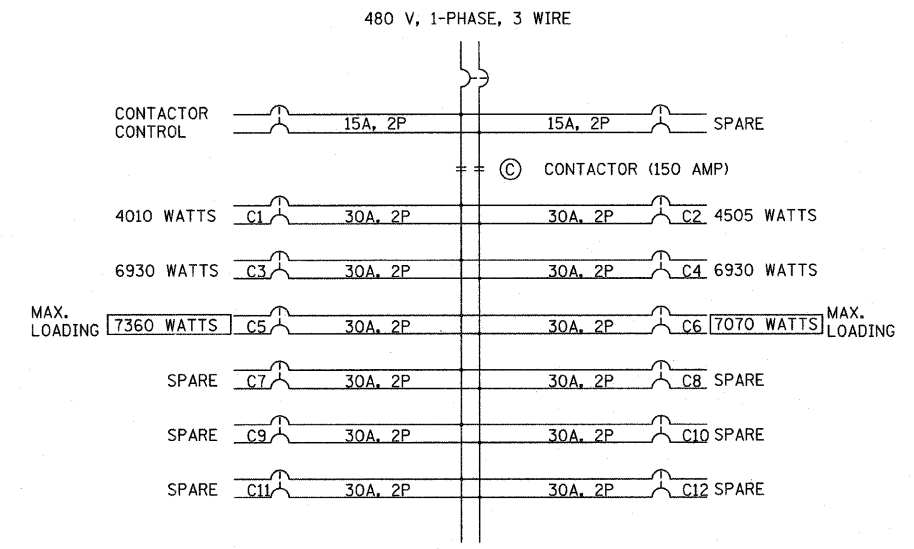


EXISTING TOLLWAY CONTROLLER AT I-294 STA. 387+95 - WIRING DIAGRAM

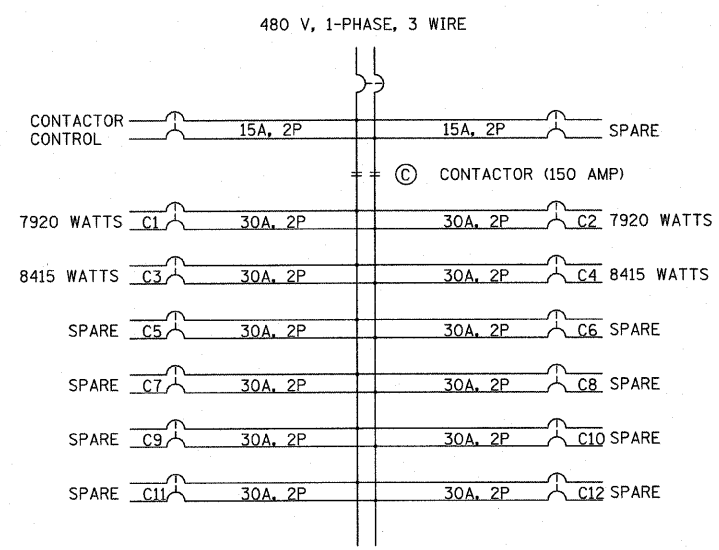


EXISTING TOLLWAY CONTROLLER AT I-294 STA. 387+95 - WIRING DIAGRAM DURING STAGED CONSTRUCTION

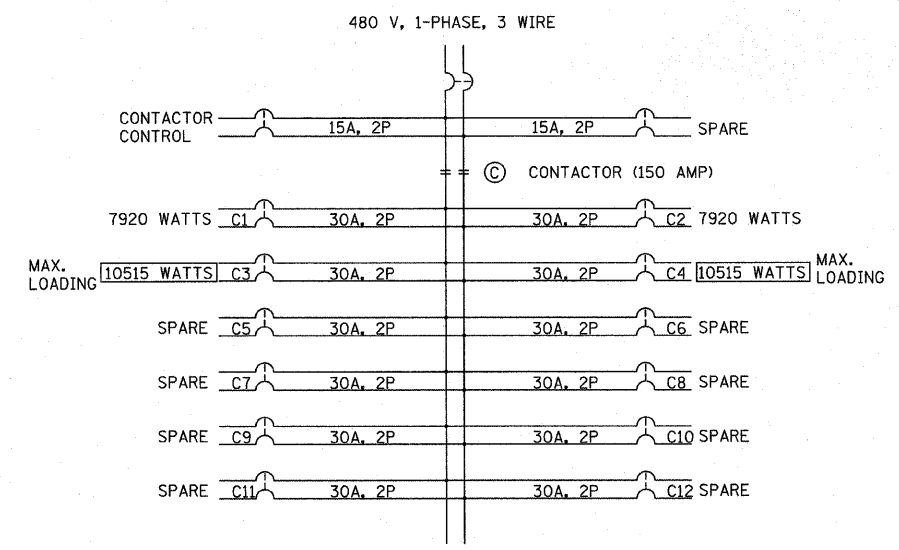


EXISTING TOLLWAY CONTROLLER AT I-294 STA. 387+95 - WIRING DIAGRAM IN FINAL CONFIGURATION

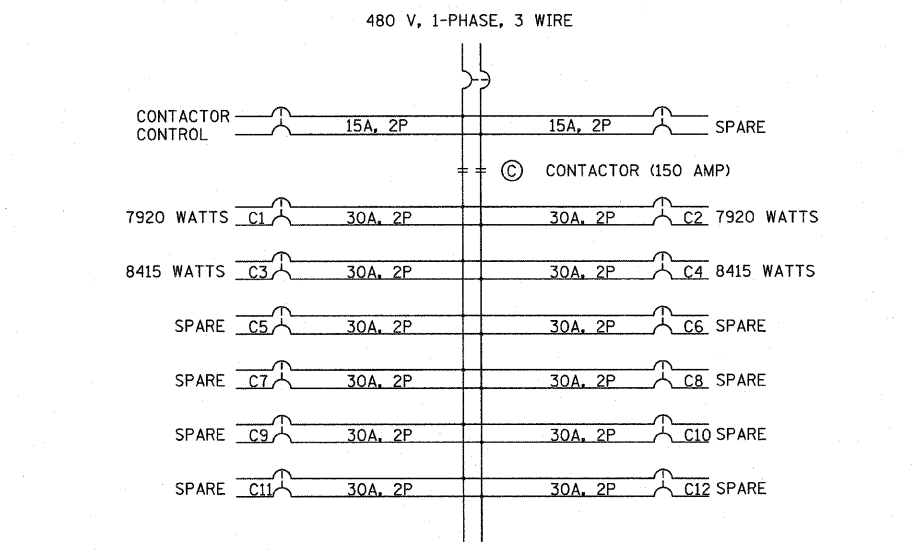
MIN. LOADING FOR CIRCUIT C5: 7210 WATTS (EXISTING LOAD) - 900 WATTS (TEMPORARY UNDERPASS LOAD) - 1200 WATTS (TEMPORARY MEDIAN LIGHT POLE LOAD) + 150 WATTS (ADDITIONAL UNDERPASS LOAD) = 5260 WATTS  
 MIN. LOADING FOR CIRCUIT C6: 6920 WATTS (EXISTING LOAD) - 900 WATTS (TEMPORARY UNDERPASS LOAD) - 1200 WATTS (TEMPORARY MEDIAN LIGHT POLE LOAD) + 150 WATTS (ADDITIONAL UNDERPASS LOAD) = 4970 WATTS  
 MAX. LOADING FOR CIRCUIT C5: 7210 WATTS (EXISTING LOAD) + 150 WATTS (ADDITIONAL UNDERPASS LOAD) = 7360 WATTS  
 MAX. LOADING FOR CIRCUIT C6: 6920 WATTS (EXISTING LOAD) + 150 WATTS (ADDITIONAL UNDERPASS LOAD) = 7070 WATTS



EXISTING TOLLWAY CONTROLLER AT I-294 STA. 443+00 - WIRING DIAGRAM



EXISTING TOLLWAY CONTROLLER AT I-294 STA. 443+00 - WIRING DIAGRAM DURING STAGED CONSTRUCTION



EXISTING TOLLWAY CONTROLLER AT I-294 STA. 443+00 - WIRING DIAGRAM IN FINAL CONFIGURATION

MAX. LOADING FOR CIRCUITS C3 AND C4 INCLUDES: 8415 WATTS (EXISTING LOAD) + 900 WATTS (TEMPORARY UNDERPASS LOAD) + 1200 WATTS (TEMPORARY MEDIAN LIGHT POLE LOAD) = 10515 WATTS  
 PLEASE NOTE: LINE WIRE DIAGRAMS ARE BASED ON EXISTING DESIGN PLANS AND FIELD INVESTIGATIONS. THE CONTRACTOR SHALL FIELD VERIFY CIRCUIT LOADING PRIOR TO THE START OF ANY CONSTRUCTION OPERATIONS.

TYLIN INTERNATIONAL	USER NAME =	DESIGNED - JDF	REVISED -	STATE OF ILLINOIS DEPARTMENT OF TRANSPORTATION	I-57 AT I-294 INTERCHANGE PROJECT I-294 LIGHTING CONTROLLER WIRING DIAGRAMS		F.A.I. RTE. 57	SECTION 1414.2B	COUNTY COOK	TOTAL SHEETS 516	SHEET NO. 213
	PLOT SCALE =	DRAWN - JDF	REVISED -		SCALE: N.T.S.	SHEET NO. 1 OF 1 SHEET	STA. TO STA.	FED. ROAD DIST. NO. ILLINOIS FED. AID PROJECT		CONTRACT NO. 60J27	
	PLOT DATE =	CHECKED - JPM	REVISED -								
		DATE - 3/18/2010	REVISED -								

p:\602540(57-294)\road\elec\PI\_ELEC\_TW\_LINE\_DIAGRAM.dgn 3/23/2010 7:02:25 AM