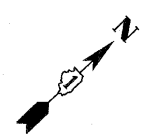
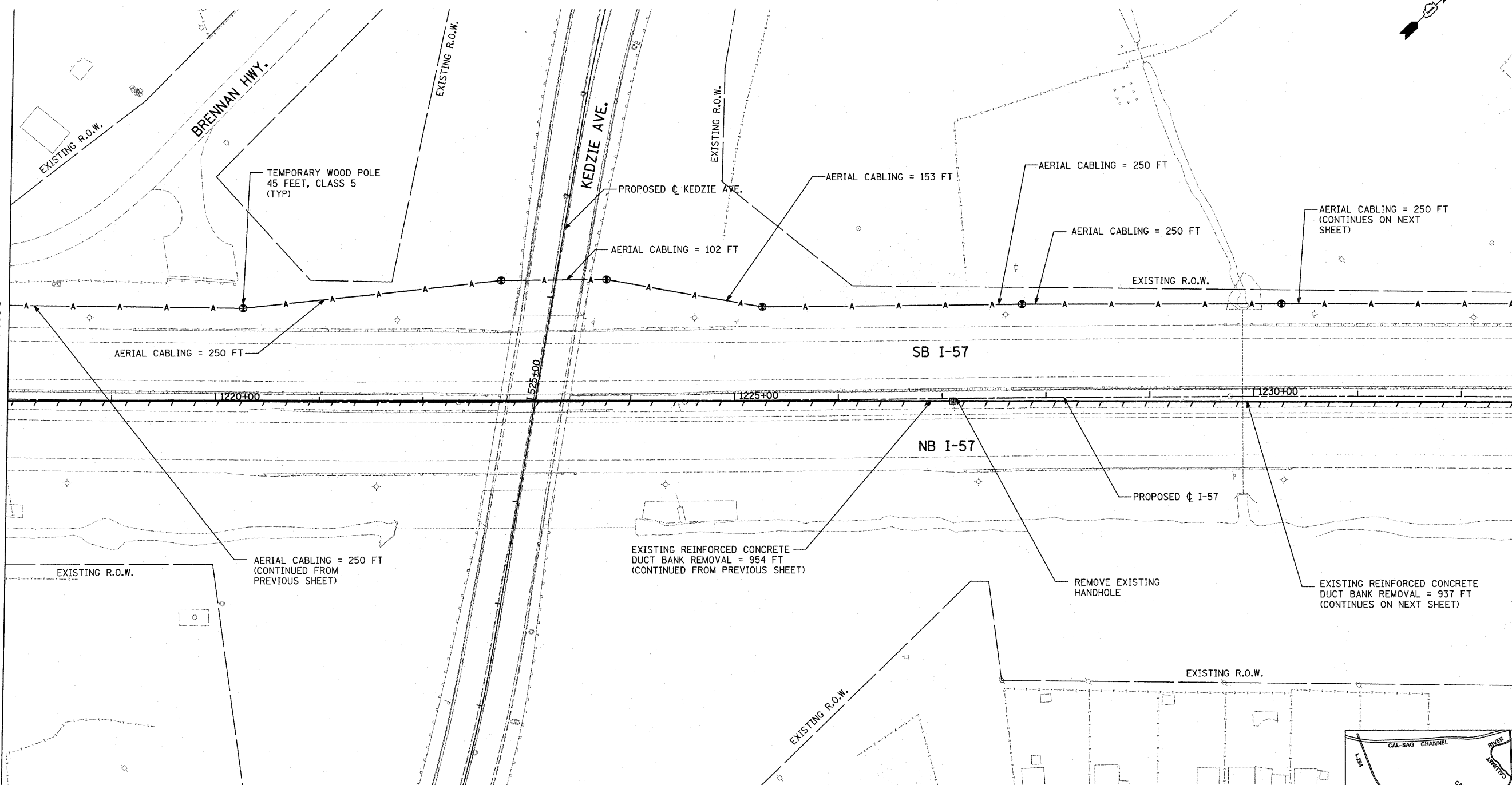


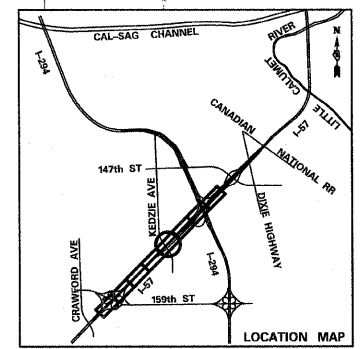
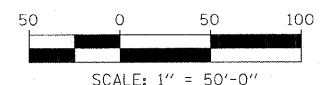
MATCHLINE STA. 1218+00.00

MATCHLINE STA. 1232+50.00



NOTES:

1. SEE WIRING DIAGRAM SHEETS FOR AERIAL CABLING DETAILS ON TEMPORARY WOOD POLES.
2. REMOVAL OF EXISTING CONDUIT SHALL BE INCLUDED IN THE COST OF THE ASSOCIATED REPLACEMENT ITEMS - SEE PROPOSED TRAFFIC SURVEILLANCE PLAN SHEETS



TYLIN INTERNATIONAL

USER NAME =	DESIGNED - JDF	REVISED -
PLOT SCALE =	DRAWN - CAC	REVISED -
PLOT DATE =	CHECKED - DAJ	REVISED -
	DATE - 3/18/2010	REVISED -

**STATE OF ILLINOIS
DEPARTMENT OF TRANSPORTATION**

**I-57 AT I-294 INTERCHANGE PROJECT
PROPOSED TEMPORARY TRAFFIC SURVEILLANCE PLAN AND REMOVALS**

F.A.I. RTE. 57	SECTION 1414.2B	COUNTY COOK	TOTAL SHEETS 516	SHEET NO. 221
FED. ROAD DIST. NO. ILLINOIS FED. AID PROJECT			CONTRACT NO. 60J27	