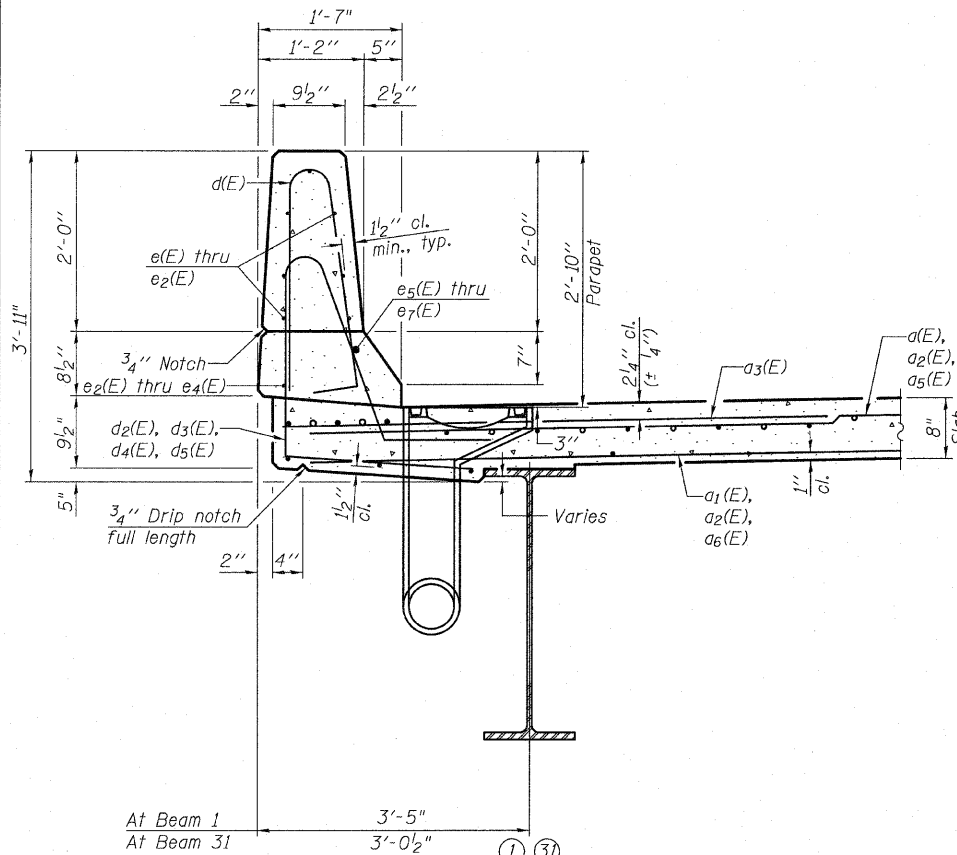
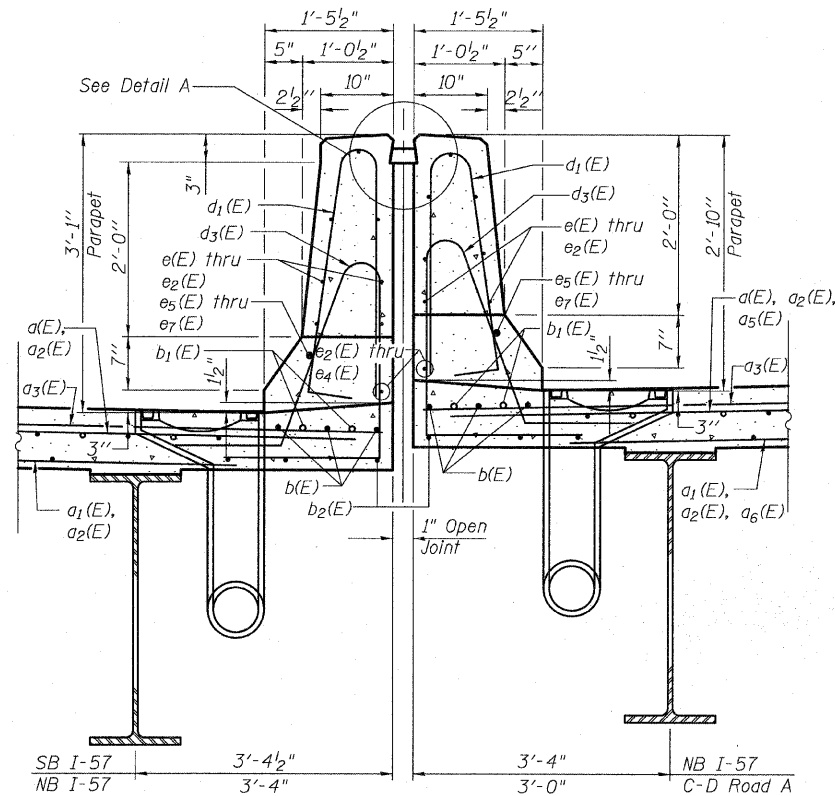


STATE OF ILLINOIS
DEPARTMENT OF TRANSPORTATION

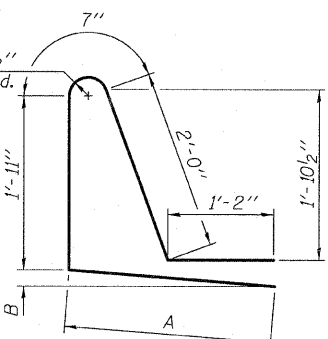
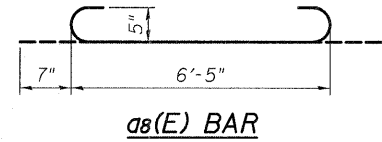


SECTION THRU PARAPET



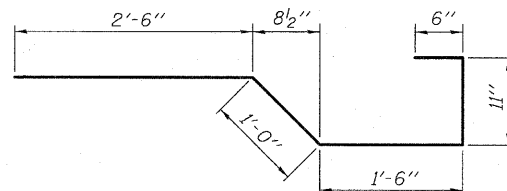
SECTION THRU MEDIAN PARAPET

(See sheets 18-20 of 68 for parapet heights)

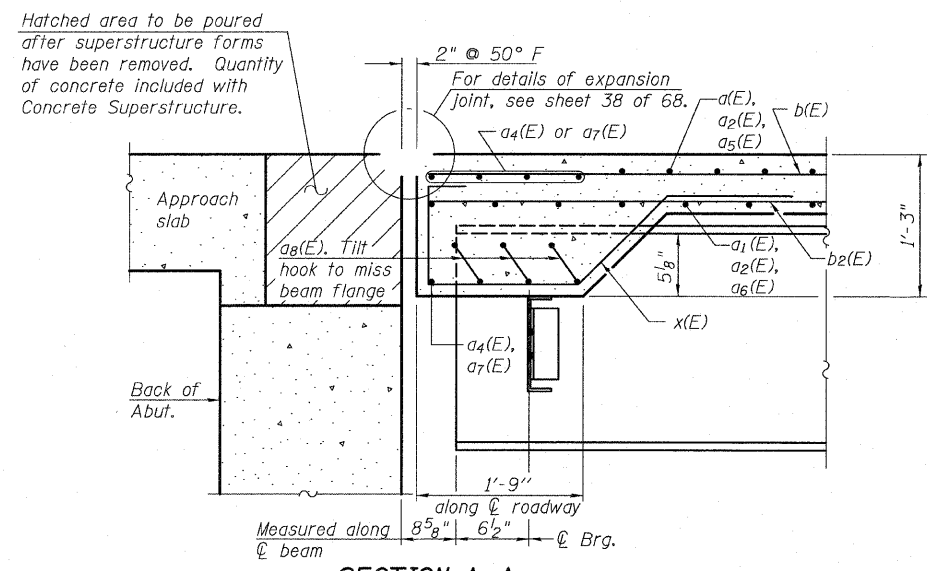


BARS d2(E) thru d5(E)

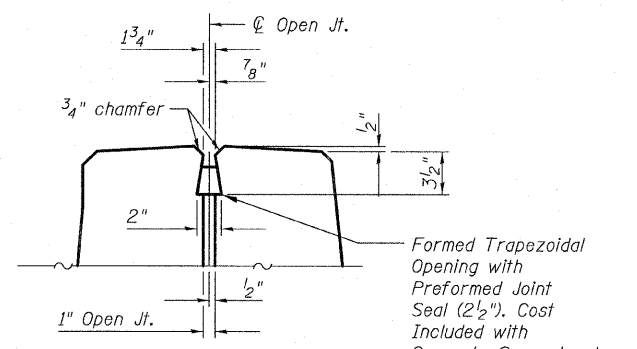
Bar	A	B
d2(E)	2'-3 1/2"	5"
d3(E)	2'-2 1/2"	0"
d4(E)	1'-11"	0"
d5(E)	1'-11"	5"



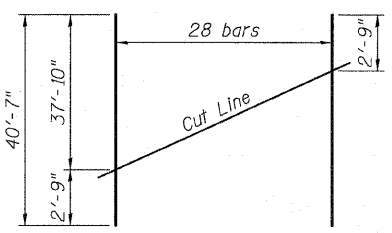
BAR x(E)



SECTION A-A

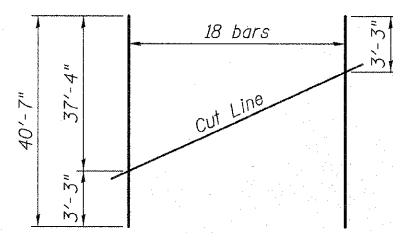


DETAIL A



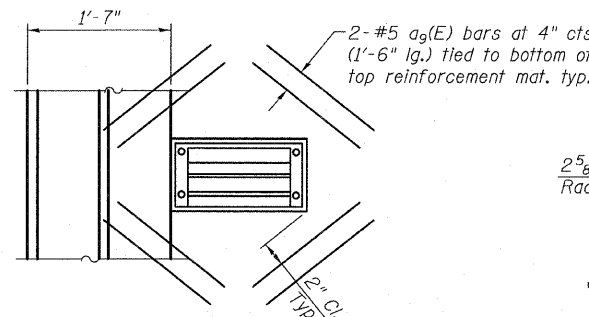
BAR a2(E) - TOP

Order bars full length. Cut as shown and use remainder of bars in opposite end.

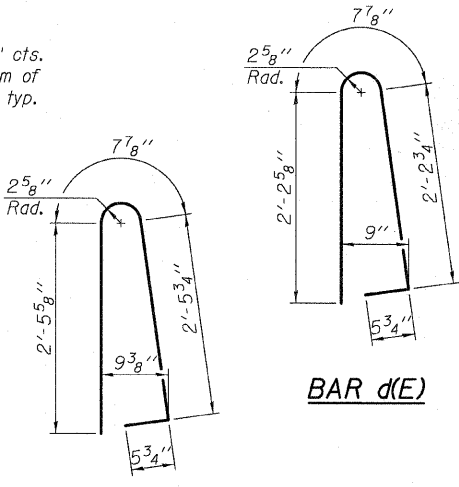


BAR a2(E) - BOTTOM

Order bars full length. Cut as shown and use remainder of bars in opposite end.



PLAN AT SCUPPERS



BAR d1(E)

SUPERSTRUCTURE
BILL OF MATERIAL

Bar	No.	Size	Length	Shape
a(E)	1724	#5	39'-3"	—
a1(E)	1680	#5	27'-9"	—
a2(E)	368	#5	40'-7"	—
a3(E)	2898	#6	6'-6"	—
a4(E)	60	#5	29'-8"	—
a5(E)	487	#5	42'-7"	—
a6(E)	317	#5	42'-2"	—
a7(E)	10	#5	46'-3"	—
a8(E)	168	#5	7'-7"	U
a9(E)	144	#5	1'-6"	—
b(E)	1414	#5	40'-5"	—
b1(E)	386	#6	52'-6"	—
b2(E)	1264	#5	35'-10"	—
d(E)	1156	#5	5'-7"	—
d1(E)	578	#5	6'-1"	—
d2(E)	289	#5	7'-11 1/2"	—
d3(E)	867	#5	7'-10 1/2"	—
d4(E)	289	#5	7'-7"	—
d5(E)	289	#5	7'-7"	—
e(E)	336	#4	18'-8"	—
e1(E)	126	#4	18'-10"	—
e2(E)	192	#4	13'-4"	—
e3(E)	24	#4	38'-9"	—
e4(E)	12	#4	29'-7"	—
e5(E)	24	#8	40'-4"	—
e6(E)	12	#8	31'-2"	—
e7(E)	24	#8	13'-4"	—
x(E)	280	#5	6'-5"	—
Reinforcement Bars, Epoxy Coated		Pound	378,970	
Concrete Superstructure		Cu. Yds.	1515.7	

SUPERSTRUCTURE DETAILS
STRUCTURE NO. 016-1251

TYLIN INTERNATIONAL	DESIGNED - PK	REVISIONS		SHEET NO. 22 68 SHEETS	F.A.I. RTE.	SECTION	COUNTY	TOTAL SHEETS	SHEET NO.	
	CHECKED - SP,	NAME	DATE		57	1414.2B	COOK	516	267	
	DRAWN - PK				CONTRACT NO. 60J27					
	CHECKED - SP,PDF				FED. ROAD DIST. NO. 1 ILLINOIS FED. AID PROJECT					
	DATE - 03/18/10									

P:\602540(67-294)\STRUCTURAL\I-57 OVER 1294\0161251-60J27-022-SUPER-DTL1.dgn 3/17/2010