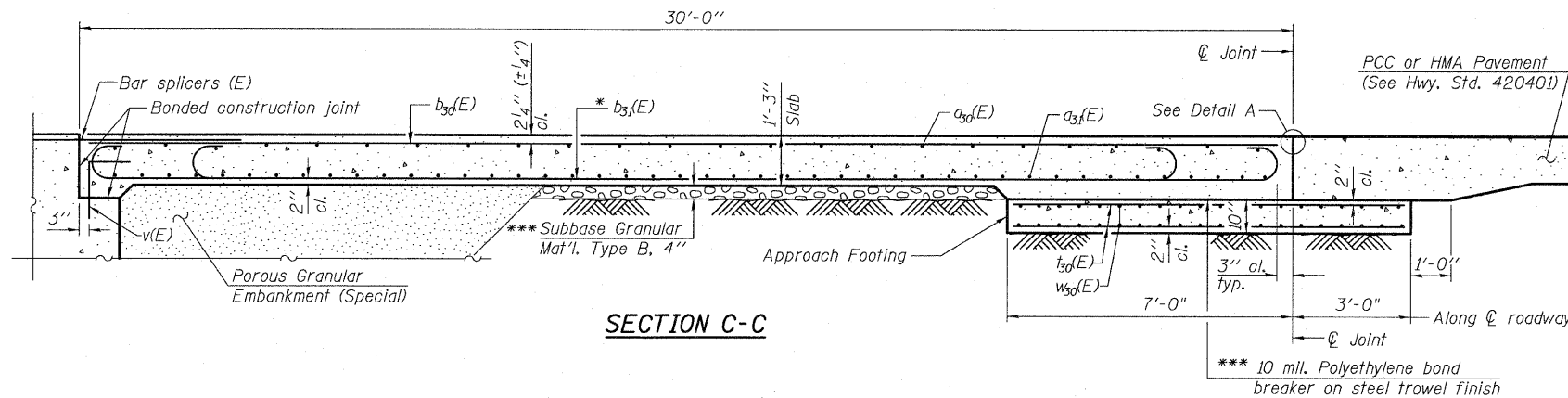


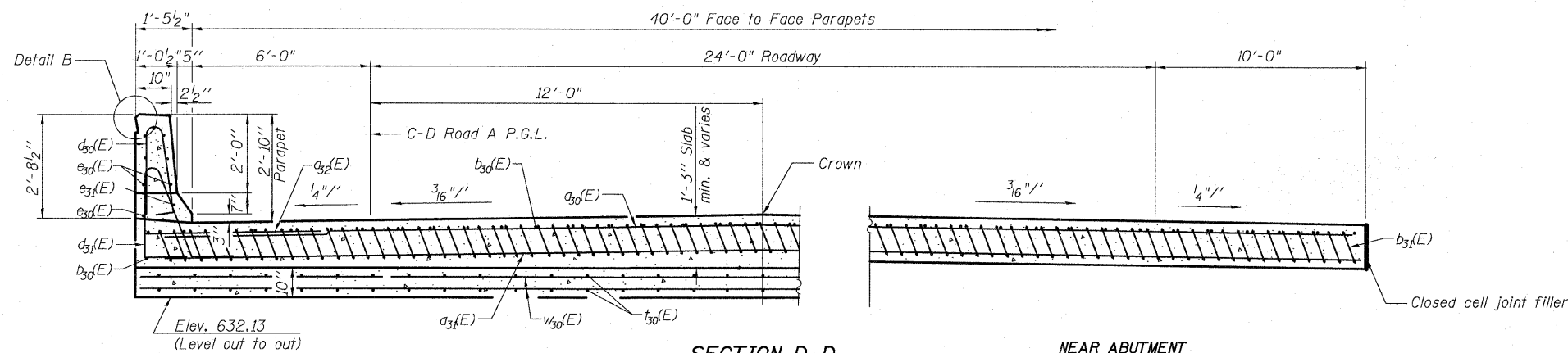
STATE OF ILLINOIS
DEPARTMENT OF TRANSPORTATION



SECTION C-C

Notes:
See sheet 23 of 68 for Detail A.
Approach slab and parapet concrete shall be paid for as Concrete Superstructure.
Approach footing concrete shall be paid for as Concrete Structures.
Reinforcement shall be paid for as Reinforcement Bars, Epoxy Coated.
For v(E) bar details, see sheet 43 of 68.
The approach footing maximum applied service bearing pressure (Qmax) = 2.0 ksf.
For bar splicer details, see sheet 56 of 68.
Cost of excavation for approach footing included with Concrete Structures.
For Porous Granular Embankment (Special) and drainage treatment details, see sheet 2 of 68.

The quantity for Bridge Deck Grooving & Protective Coat for approach slab is included with the quantities on sheet 2 of 68.

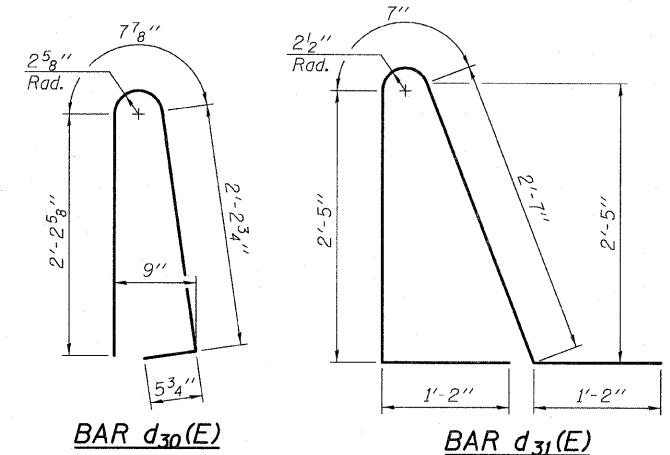


SECTION D-D

AT APPROACH FOOTING

NEAR ABUTMENT

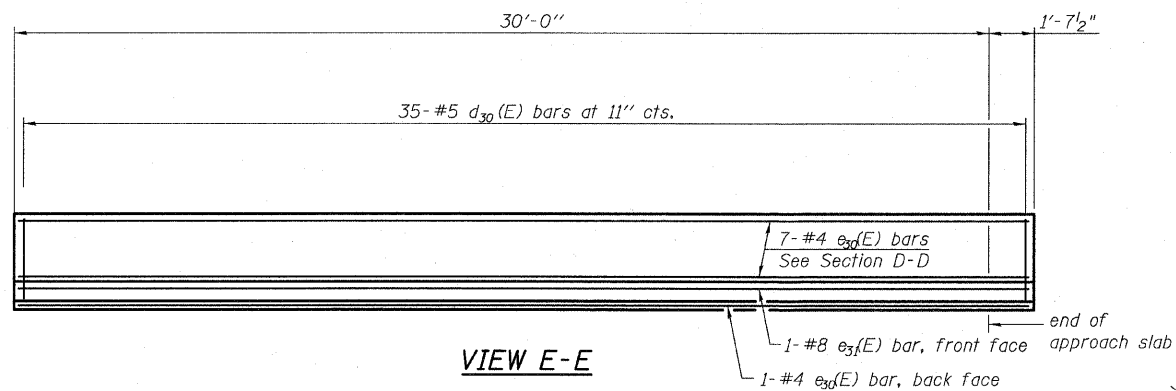
* Tilt #9 b31(E) bars as required to maintain clearance.
*** Cost Included with Concrete Superstructure.



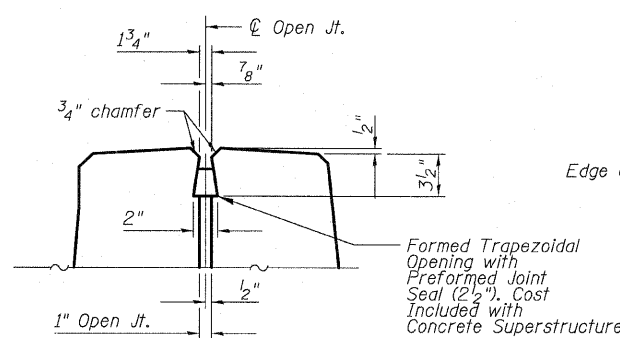
BILL OF MATERIAL

| Bar | No. | Size | Length | Shape | |
|----------------------------------|-----|------|--------|---------|--------|
| a30(E) | 25 | #4 | 45'-7" | ┌───┐ | |
| a31(E) | 46 | #5 | 45'-7" | ┌───┐ | |
| a32(E) | 50 | #6 | 6'-6" | ┌───┐ | |
| b30(E) | 35 | #4 | 29'-8" | ┌───┐ | |
| b31(E) | 102 | #9 | 29'-9" | ┌───┐ | |
| b33(E) | 1 | #4 | 19'-5" | ┌───┐ | |
| d30(E) | 35 | #5 | 5'-7" | ┌───┐ | |
| d31(E) | 35 | #5 | 7'-11" | ┌───┐ | |
| e30(E) | 8 | #4 | 31'-3" | ┌───┐ | |
| e31(E) | 1 | #8 | 31'-3" | ┌───┐ | |
| v30(E) | 86 | #4 | 9'-8" | ┌───┐ | |
| w30(E) | 40 | #5 | 45'-7" | ┌───┐ | |
| Concrete Superstructure | | | | Cu. Yd. | 74.1 |
| Concrete Structures | | | | Cu. Yd. | 14.2 |
| Reinforcement Bars, Epoxy Coated | | | | Pound | 17,570 |

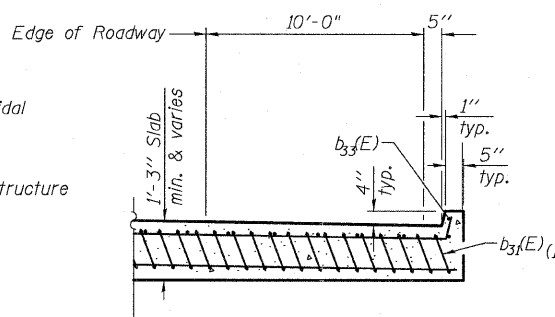
(1.) 2,460 pounds billed in Substructure
Total in Total Bill of Material on Sheet 2



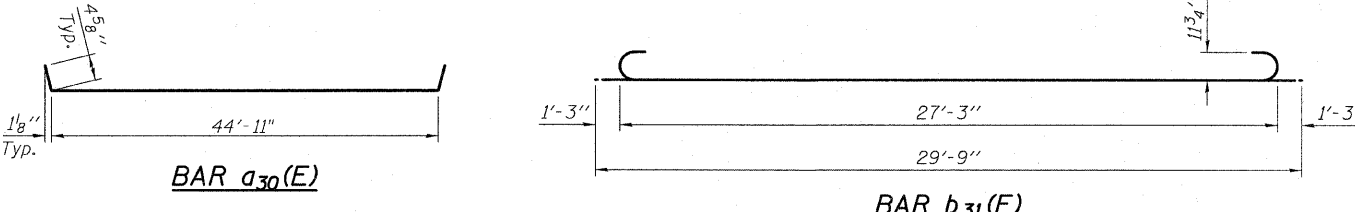
VIEW E-E



DETAIL B



Section B-B



BAR a30(E)

BAR b31(E)

WEST APPROACH SLAB C-D ROAD A - 2
STRUCTURE NO. 016-1251

| | | | | | | | | | | | | | | | | | |
|---------------------|------------------|-----------|------|--------------|------------|--------------------------------|--------|------------------|-----------|----|---------|------|-----|-----|--------------------|--|--|
| TYLIN INTERNATIONAL | DESIGNED - JMA | REVISIONS | | SHEET NO. 24 | F.A.I RTE. | SECTION | COUNTY | TOTAL SHEETS | SHEET NO. | | | | | | | | |
| | CHECKED - SP, | NAME | DATE | | | | | | | 57 | 1414.2B | COOK | 516 | 269 | | | |
| | DRAWN - JMA | | | | | | | | | | | | | | | | |
| | CHECKED - SP,PDF | | | | | | | | | | | | | | CONTRACT NO. 60J27 | | |
| | DATE - 03/18/10 | | | | | | | | | | | | | | | | |
| | | | | 68 SHEETS | | FED. ROAD DIST. NO. 1 ILLINOIS | | FED. AID PROJECT | | | | | | | | | |

P:\602540157-299\STRUCTURAL\1-57 OVER 1294.0161251-60.127-024-W_APPR2.dwg 3/17/2010