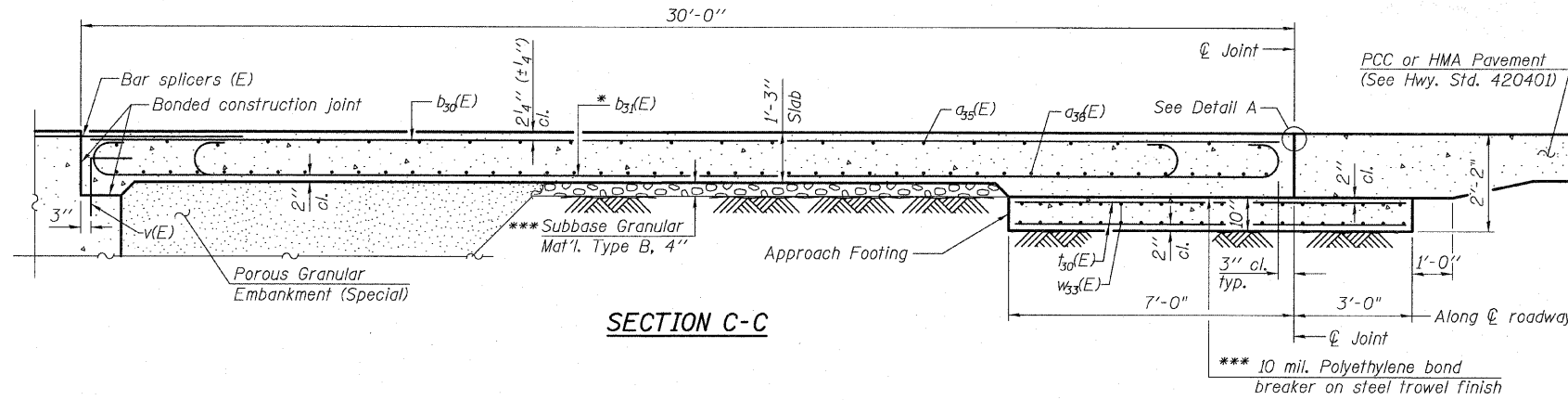
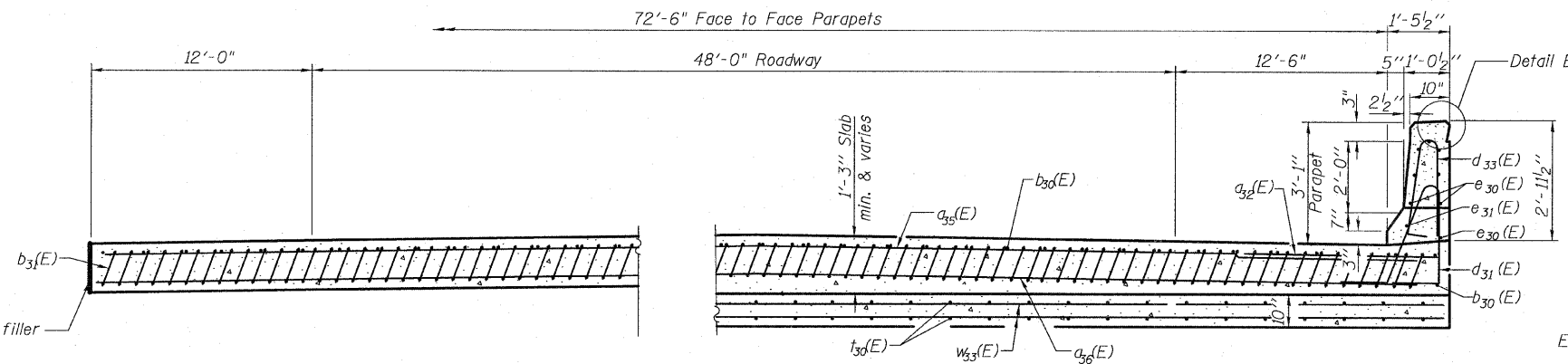


STATE OF ILLINOIS
DEPARTMENT OF TRANSPORTATION



SECTION C-C

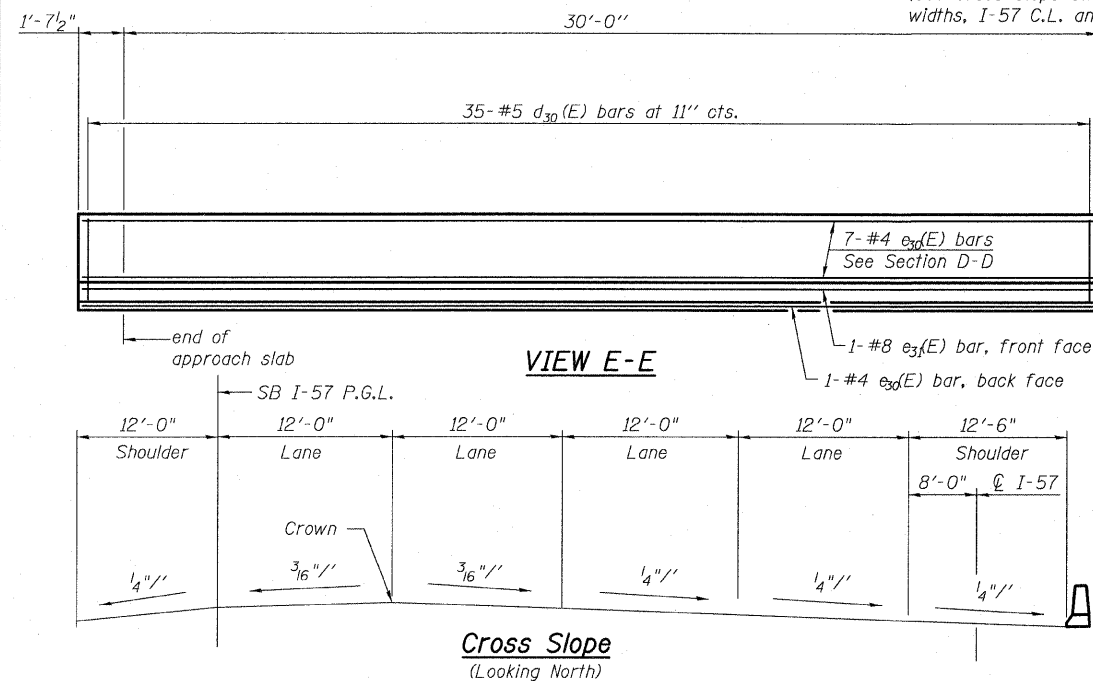


NEAR ABUTMENT

AT APPROACH FOOTING

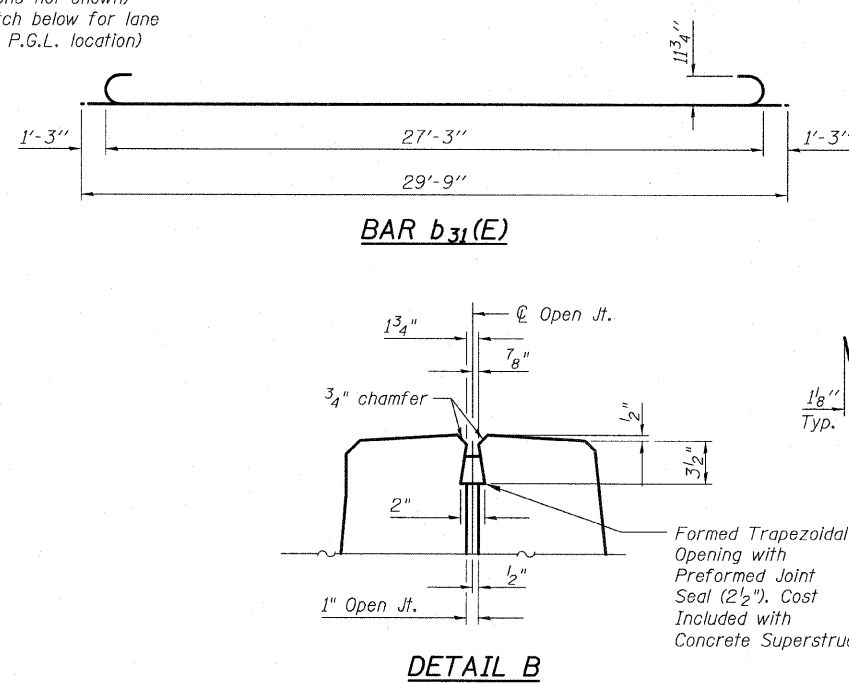
SECTION D-D

(See Plan for dimensions not shown)
(See Cross Slope Sketch below for lane widths, I-57 C.L. and P.G.L. location)

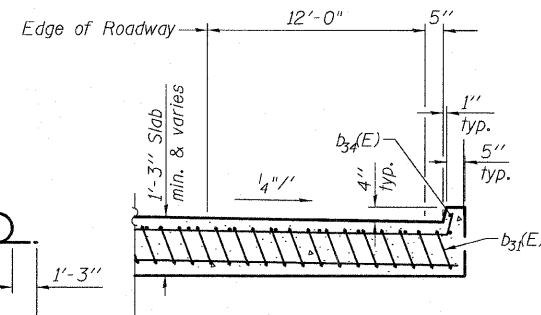


VIEW E-E

Cross Slope
(Looking North)

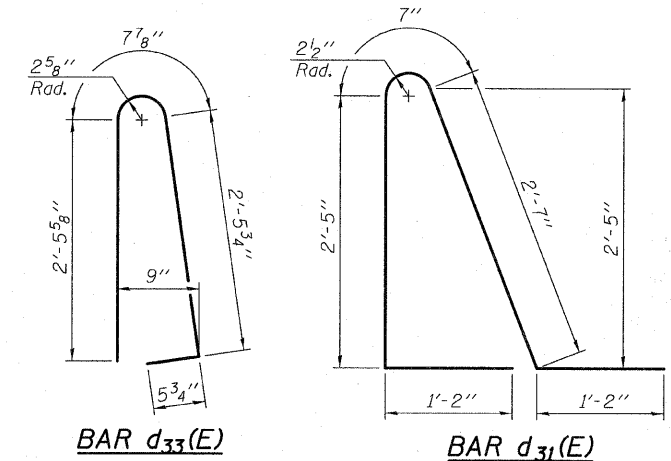


DETAIL B



VIEW B-B

BAR a35(E)



BAR d33(E)

BAR d31(E)

BILL OF MATERIAL

Bar	No.	Size	Length	Shape
a32(E)	25	#6	6'-6"	—
a35(E)	75	#4	28'-11"	—
a36(E)	92	#5	42'-0"	—
b30(E)	61	#4	29'-8"	—
b31(E)	178	#9	29'-9"	—
b34(E)	1	#4	20'-2"	—
d31(E)	35	#5	7'-11"	—
d34(E)	35	#5	6'-1"	—
e30(E)	8	#4	31'-3"	—
e31(E)	1	#8	31'-3"	—
i30(E)	150	#4	9'-8"	—
w33(E)	120	#5	29'-1"	—
Concrete Superstructure		Cu. Yd.	109.1	
Concrete Structures		Cu. Yd.	25.1	
(1.) Reinforcement Bars, Epoxy Coated		Pound	30,330	

(1.) 4,610 pounds billed in Substructure
Total in Total Bill of Material on Sheet 2

WEST APPROACH SB I-57 - 2
STRUCTURE NO. 016-1251

TYLIN INTERNATIONAL	DESIGNED - JMA	REVISIONS		SHEET NO. 28	F.A.I. RTE. 57	SECTION 1414.2B	COUNTY COOK	TOTAL SHEETS 516	SHEET NO. 273
	CHECKED - SP,	NAME	DATE						
	DRAWN - JMA								
	CHECKED - SP,PDF								
	DATE - 03/18/10								
					68 SHEETS		CONTRACT NO. 60J27		
					FED. ROAD DIST. NO. 1 ILLINOIS FED. AID PROJECT				