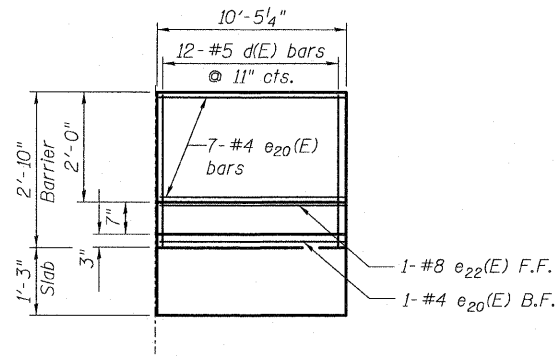
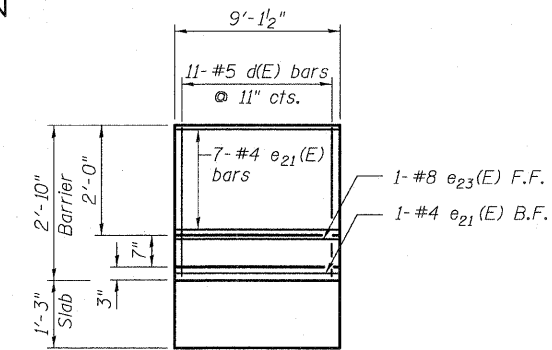


STATE OF ILLINOIS
DEPARTMENT OF TRANSPORTATION



INSIDE ELEVATION OF BARRIER

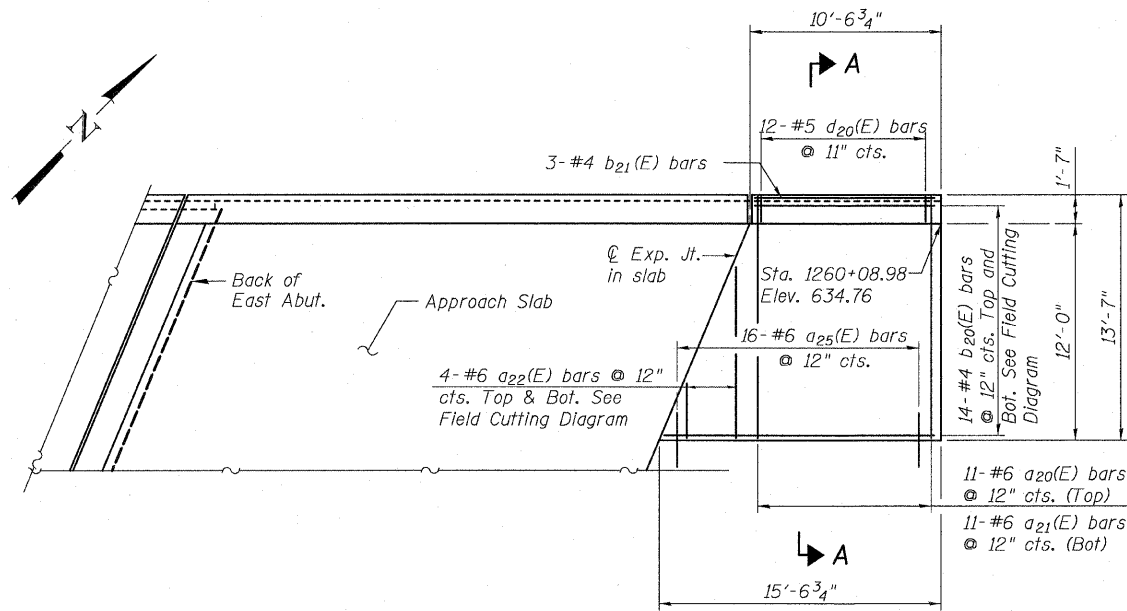


INSIDE ELEVATION OF BARRIER

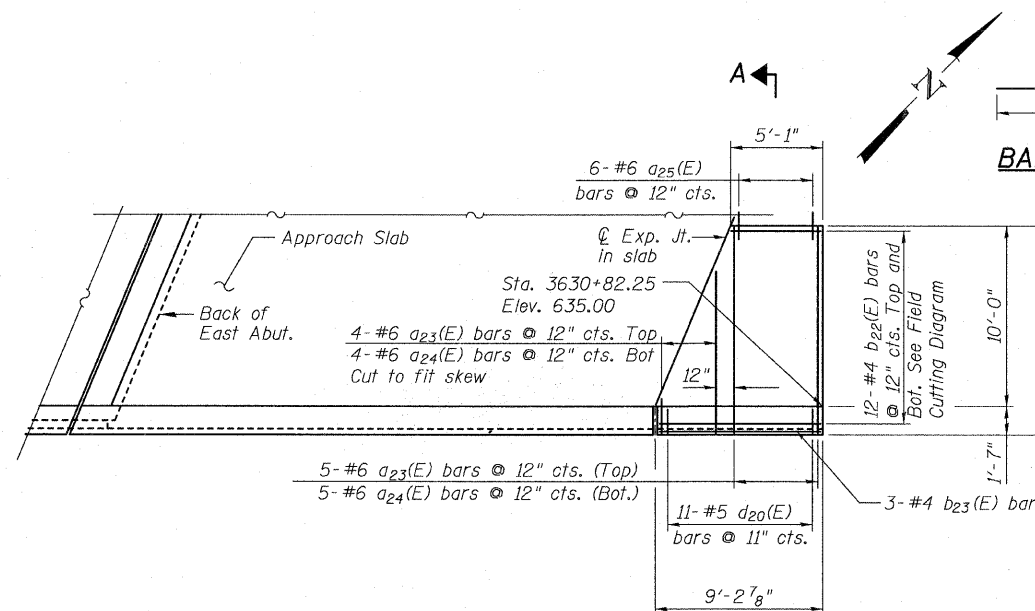
BAR a23(E)

BAR a20(E)

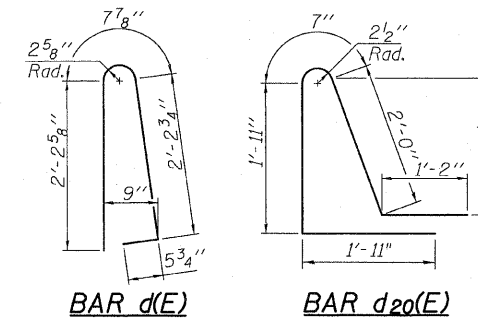
BAR NO.	SIZE	LENGTH	SHAPE
a20(E)	11 #6	14'-8"	U
a21(E)	4 #6	13'-3"	U
a22(E)	9 #6	12'-8"	U
a23(E)	9 #6	12'-8"	U
a24(E)	9 #6	11'-3"	U
a25(E)	22 #6	2'-6"	U
b20(E)	14 #4	25'-3"	U
b21(E)	3 #4	10'-1"	U
b22(E)	12 #4	13'-7"	U
b23(E)	3 #4	8'-10"	U
d(E)	23 #5	5'-7"	U
d20(E)	23 #5	7'-7"	U
e20(E)	8 #4	10'-1"	U
e21(E)	8 #4	8'-10"	U
e22(E)	1 #8	10'-1"	U
e23(E)	1 #8	8'-10"	U
Concrete Superstructure			Cu. Yd. 14.4
Reinforcement Bars, Epoxy Coated			Pound 1,800



PLAN-SB I-57

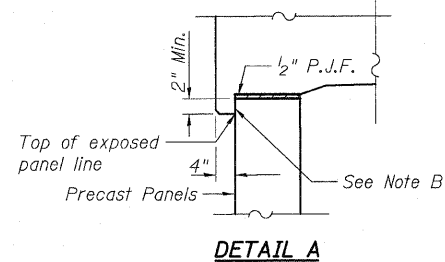


PLAN C-D ROAD A



BAR d(E)

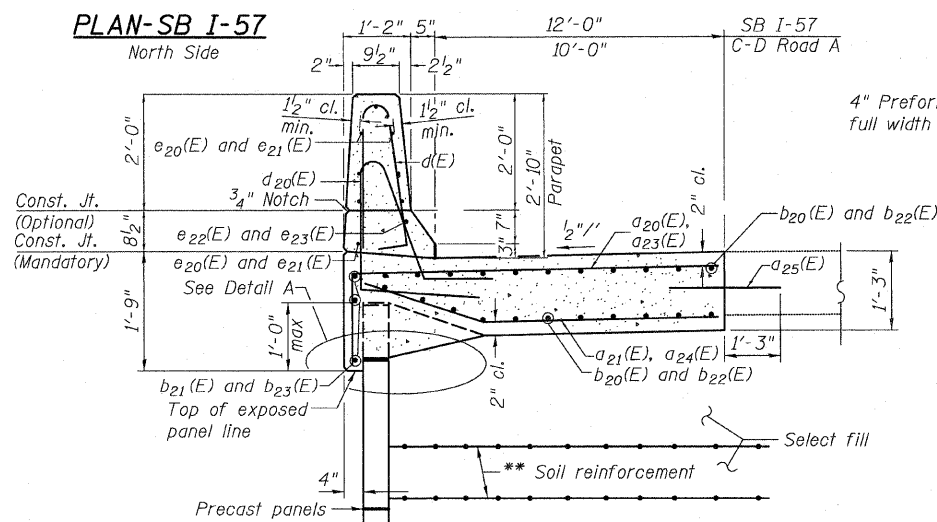
BAR d20(E)



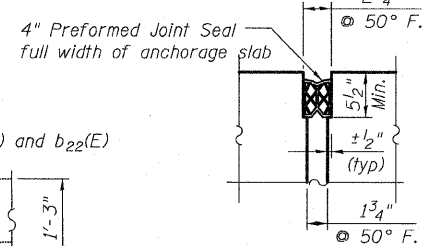
DETAIL A

Note B:
Bond breaker membrane on front of panel

**The M.S.E. wall supplier's internal stability design shall account for the anchorage slab's bearing pressure surcharge of 1.0 ksf and horizontal sliding force of 0.5 kips/ft. of wall.

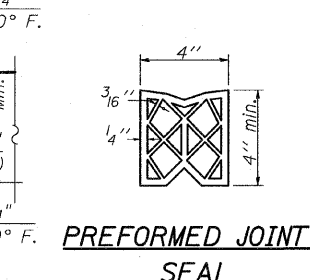


SECTION A-A

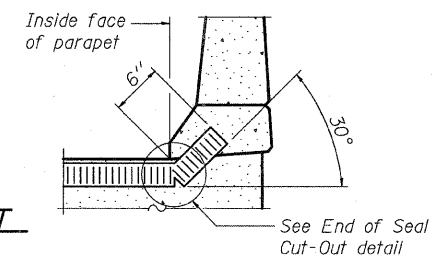


SECTION

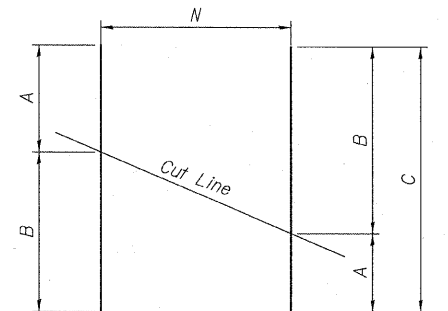
END OF SEAL CUT-OUT



PREFORMED JOINT SEAL



END OF SEAL TREATMENT AT PARAPET



Bar	N	A	B	C
a22(E)	4-#6	2'-10"	10'-0"	12'-10"
b20(E)	14-#4	10'-1"	15'-2"	25'-3"
b22(E)	12-#4	4'-9"	8'-10"	13'-7"

FIELD CUTTING DIAGRAM
Order bars full length. Cut as shown and use remainder of bars in opposite face

ANCHORAGE SLAB DETAILS
S.N. 016-1251

TYLIN INTERNATIONAL

DESIGNED - JMA	REVISIONS	
CHECKED - SP,	NAME	DATE
DRAWN - JMA		
CHECKED - SP,PDF		
DATE - 03/18/10		

SHEET NO. 35
68 SHEETS

F.A.I RTE.	SECTION	COUNTY	TOTAL SHEETS	SHEET NO.
57	1414.2B	COOK	516	280
CONTRACT NO. 60J27				
FED. ROAD DIST. NO. 1 ILLINOIS FED. AID PROJECT				

P:\602540(57-294)\STRUCTURAL\I-57_OVER_1294\0161251-60J27-035-MOMENTS\SL.B1.dwg 3/17/2010