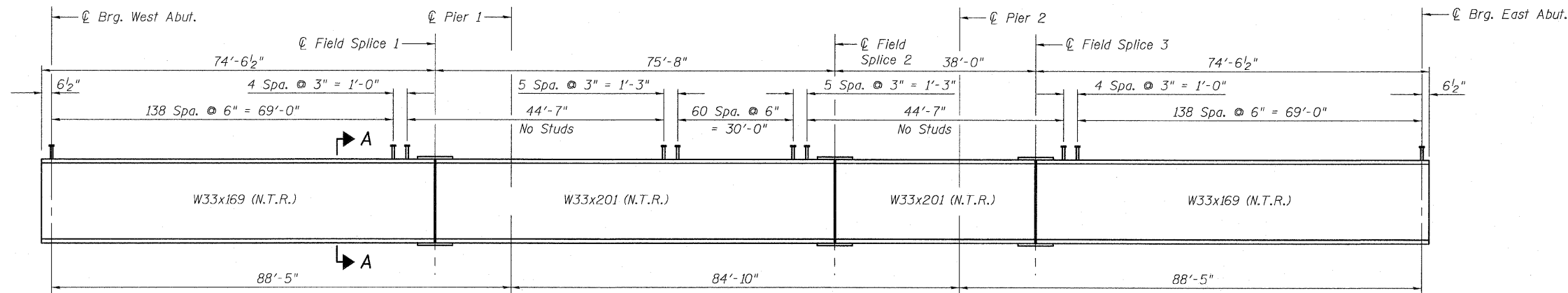
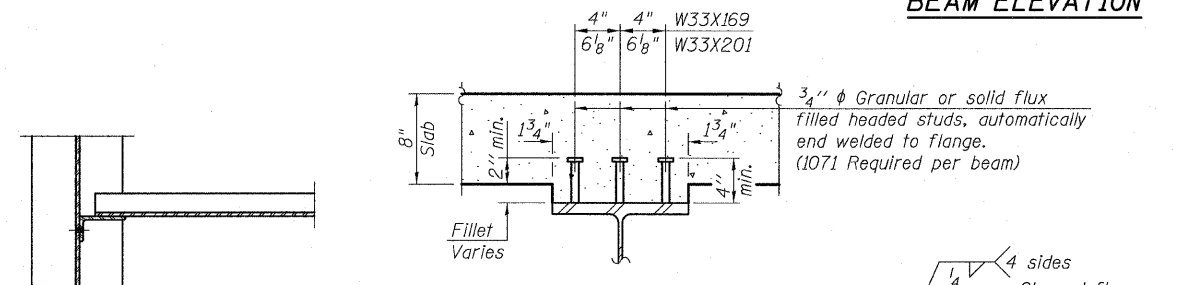


STATE OF ILLINOIS
DEPARTMENT OF TRANSPORTATION

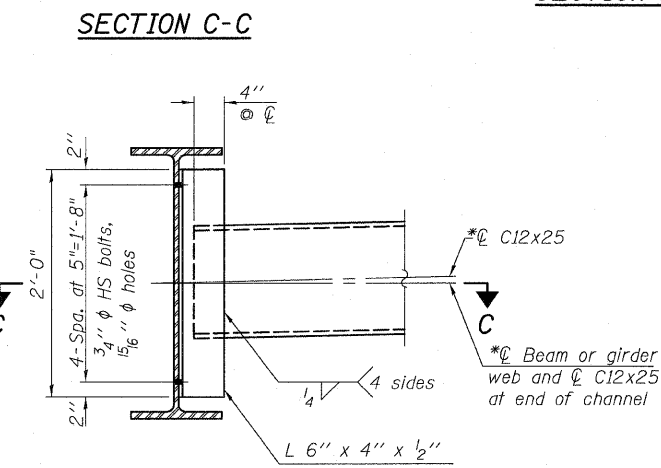


BEAM ELEVATION



SECTION A-A

SECTION B-B

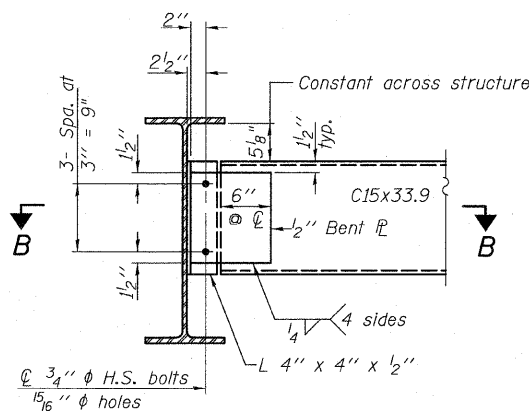


SECTION C-C

INTERIOR DIAPHRAGMS - D1, D2

(242 - D1 required)
(66 - D2 required)

Note:
Two hardened washers required for each set of oversized holes.
*Alternate channels (C12x30) are permitted to facilitate material acquisition. Calculated weight of structural steel is based on the lighter section.
The alternate, if utilized, shall be provided at no additional cost to the Department.



END DIAPHRAGMS - D3, D4

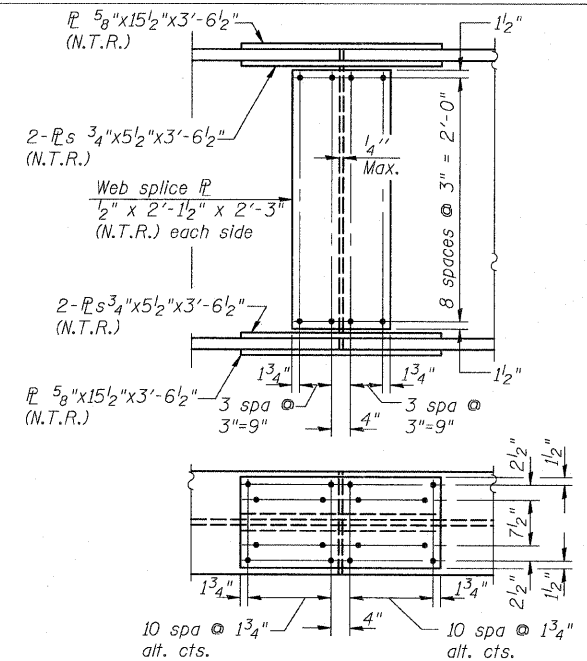
(44 - D3 required)
(12 - D4 required)

Note:
Two hardened washers required for each set of oversized holes.

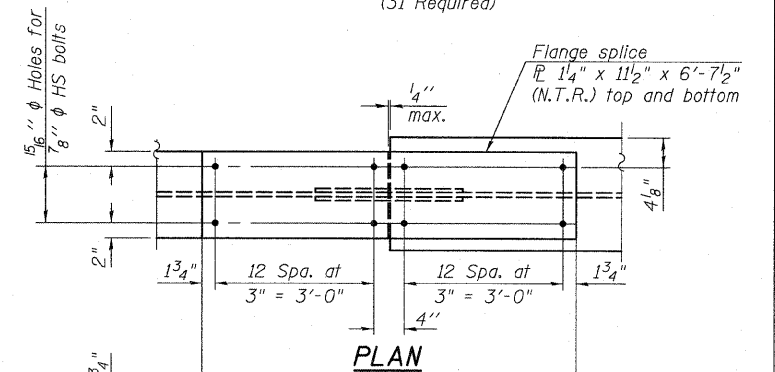
TOP OF BEAM ELEVATIONS

For Fabrication Only

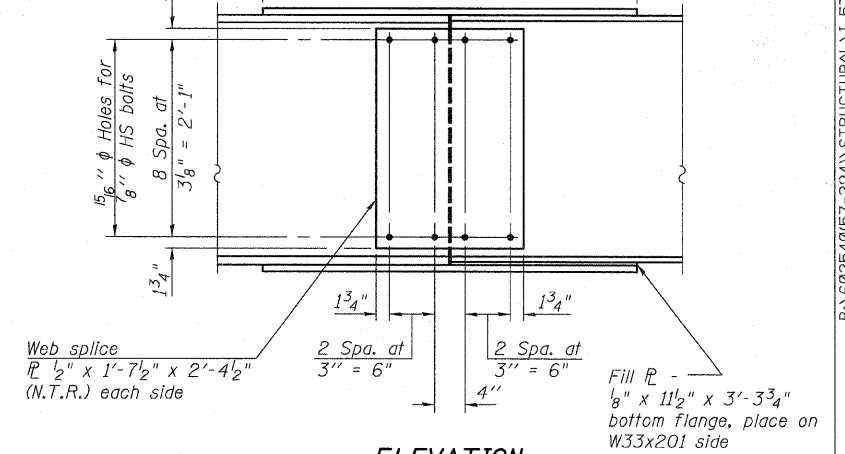
Beam	℄ Brg. W. Abut.	℄ F.S. #1	℄ Pier 1	℄ F.S. #2	℄ Pier 2	℄ F.S. #3	℄ Brg. E. Abut.
1	634.36	634.51	634.51	634.51	634.54	634.56	634.47
2	634.48	634.63	634.63	634.64	634.67	634.69	634.61
3	634.56	634.75	634.75	634.75	634.79	634.81	634.74
4	634.67	634.84	634.84	634.85	634.89	634.91	634.84
5	634.67	634.84	634.85	634.86	634.90	634.92	634.86
6	634.56	634.74	634.74	634.76	634.80	634.83	634.76
7	634.44	634.62	634.62	634.65	634.69	634.71	634.66
8	634.30	634.48	634.49	634.51	634.56	634.59	634.53
9	634.16	634.35	634.35	634.38	634.43	634.46	634.41
10	634.02	634.21	634.22	634.25	634.30	634.33	634.28
11	633.87	634.07	634.08	634.12	634.17	634.20	634.16
12	633.73	633.94	633.95	633.99	634.04	634.07	634.03
13	633.89	634.40	634.11	634.15	634.20	634.23	634.20
14	634.01	634.22	634.24	634.28	634.33	634.36	634.33
15	634.13	634.35	634.36	634.41	634.46	634.49	634.47
16	634.25	634.47	634.48	634.54	634.59	634.62	634.60
17	634.36	634.58	634.59	634.65	634.71	634.74	634.73
18	634.44	634.67	634.69	634.75	634.80	634.84	634.83
19	634.44	634.67	634.69	634.71	634.75	634.81	634.85
20	634.33	634.57	634.58	634.65	634.71	634.75	634.75
21	634.20	634.44	634.46	634.53	634.60	634.63	634.64
22	634.06	634.31	634.32	634.40	634.46	634.50	634.51
23	633.91	634.17	634.19	634.27	634.33	634.37	634.38
24	633.77	634.03	634.05	634.13	634.20	634.24	634.26
25	634.10	634.38	634.42	634.57	634.61	634.63	634.66
26	634.20	634.49	634.52	634.63	634.70	634.75	634.78
27	634.28	634.58	634.61	634.72	634.79	634.84	634.88
28	634.30	634.60	634.63	634.75	634.82	634.87	634.92
29	634.19	634.50	634.52	634.64	634.72	634.77	634.82
30	634.07	634.38	634.41	634.53	634.61	634.66	634.72
31	633.92	634.24	634.27	634.40	634.48	634.53	634.59



FIELD SPLICE #2
(31 Required)



PLAN



ELEVATION

FIELD SPLICE #1 & #3

(62 Required)

STRUCTURAL STEEL DETAILS

STRUCTURE NO. 016-1251

TYLIN INTERNATIONAL	DESIGNED - SP	REVISIONS		SHEET NO. 40	F.A.I. RTE.	SECTION	COUNTY	TOTAL SHEETS	SHEET NO.
	CHECKED - SP,	NAME	DATE		57	1414.2B	COOK	516	285
	DRAWN - SP				68 SHEETS	CONTRACT NO. 60J27			
	CHECKED - SP,PDF				FED. ROAD DIST. NO. 1 ILLINOIS FED. AID PROJECT				
DATE - 03/18/10									

P:\602540157-2141\STRUCTURAL\1-57 OVER 1294\0161251-60J27-040-STL-DTL.dwg 3/17/2010