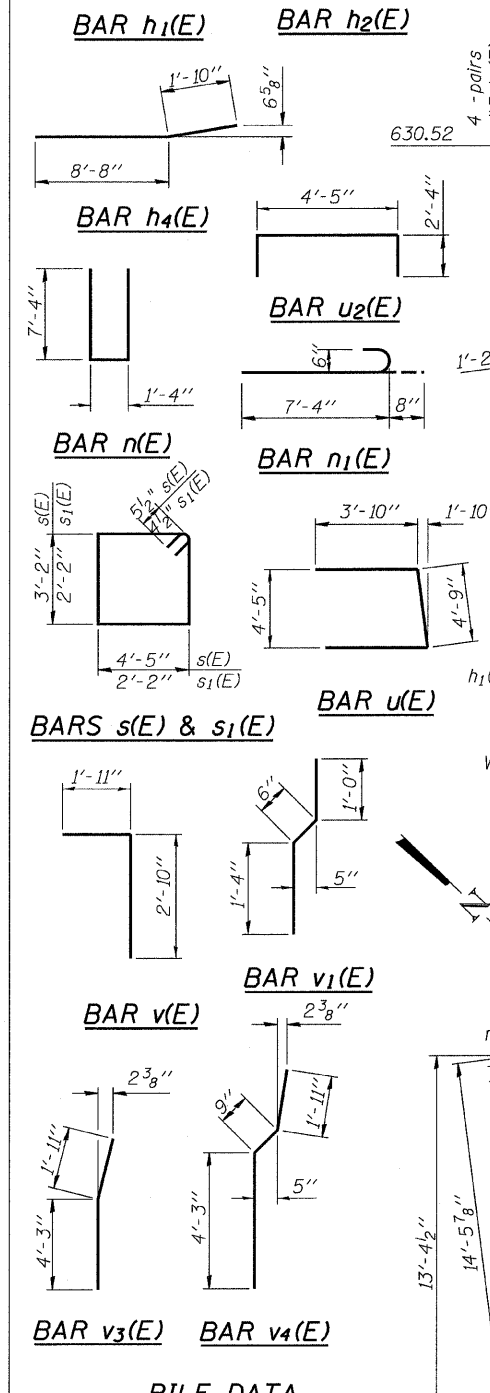
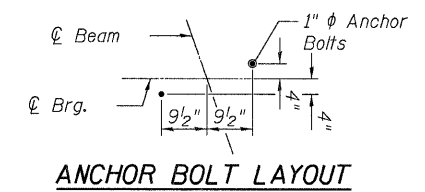
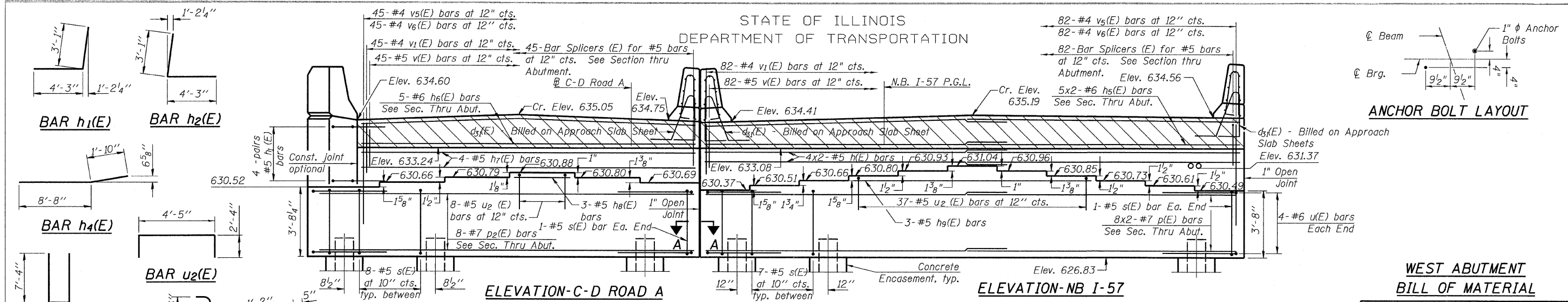


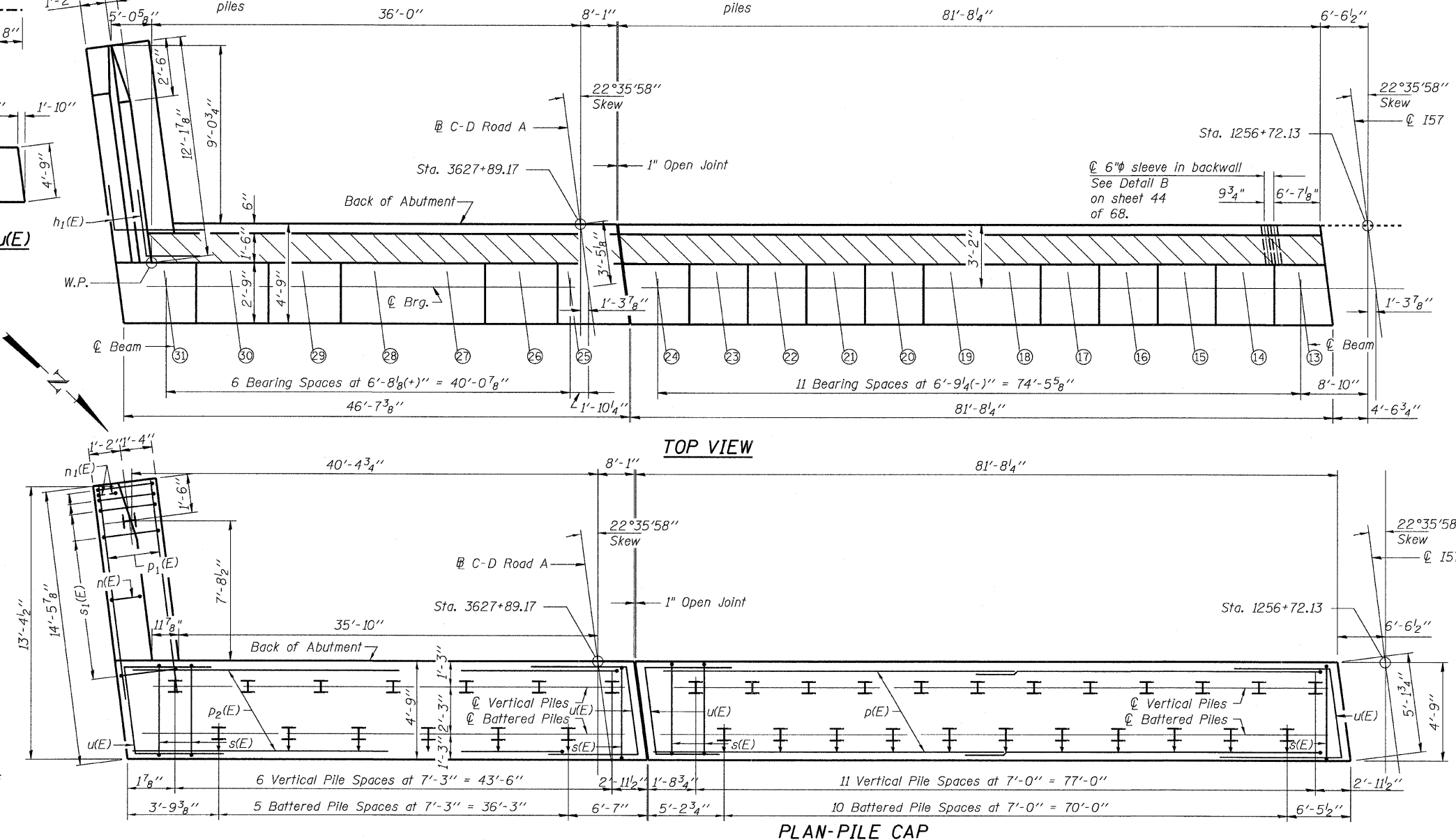
STATE OF ILLINOIS
DEPARTMENT OF TRANSPORTATION



WEST ABUTMENT
BILL OF MATERIAL

Bar	No.	Size	Length	Shape
h(E)	16	#5	46'-5"	
h1(E)	8	#5	7'-4"	
h2(E)	8	#5	7'-4"	
h3(E)	22	#4	11'-2"	
h4(E)	14	#4	10'-6"	
h5(E)	20	#6	43'-0"	
h6(E)	5	#6	46'-3"	
h7(E)	4	#5	44'-8"	
h8(E)	3	#5	13'-0"	
h9(E)	3	#5	40'-6"	
h10(E)	6	#5	32'-2"	
h11(E)	3	#5	26'-9"	
n(E)	18	#6	16'-0"	
n1(E)	6	#6	8'-0"	
p(E)	32	#7	43'-4"	
p1(E)	12	#7	12'-2"	
p2(E)	8	#7	46'-3"	
s(E)	208	#5	16'-1"	
s1(E)	24	#4	9'-5"	
u(E)	24	#6	12'-5"	
u2(E)	135	#5	9'-1"	
v(E)	208	#5	4'-9"	
v1(E)	208	#4	2'-10"	
v2(E)	24	#6	6'-7"	
v3(E)	6	#6	6'-2"	
v4(E)	18	#6	6'-11"	
v5(E)	208	#4	4'-1"	
v6(E)	208	#4	4'-6"	
Structure Excavation		Cu. Yd.	433	
Concrete Structures		Cu. Yd.	209.2	
Reinforcement Bars, Epoxy Coated		Pound	16,300	
Furnishing Steel Piles, HP 12x53		Foot	1,680	
Driving Piles		Foot	1,680	
Test Pile, Steel HP 12x53		Each	1	
Concrete Encasement		Cu. Yd.	63.9	

WEST ABUTMENT - 1
STRUCTURE NO. 016-1251



PILE DATA
Type: HP 12x53 with Pile Shoes
Nominal Required Bearing: 300 kips
Factored Resistance Available: 165 kips
Est. Length: 28 feet
No. Production Piles: 60
No. Test Piles: 1

DESIGNED - EKH	REVISIONS		SHEET NO. 43	F.A.I. RTE. 57	SECTION 1414.2B	COUNTY COOK	TOTAL SHEETS 516	SHEET NO. 288
	NAME	DATE						
CHECKED - SP,			68 SHEETS			CONTRACT NO. 60J27		
DRAWN - EKH						FED. ROAD DIST. NO. 1 ILLINOIS FED. AID PROJECT		
CHECKED - SP,PDF								
DATE - 03/18/10		04/29/10						