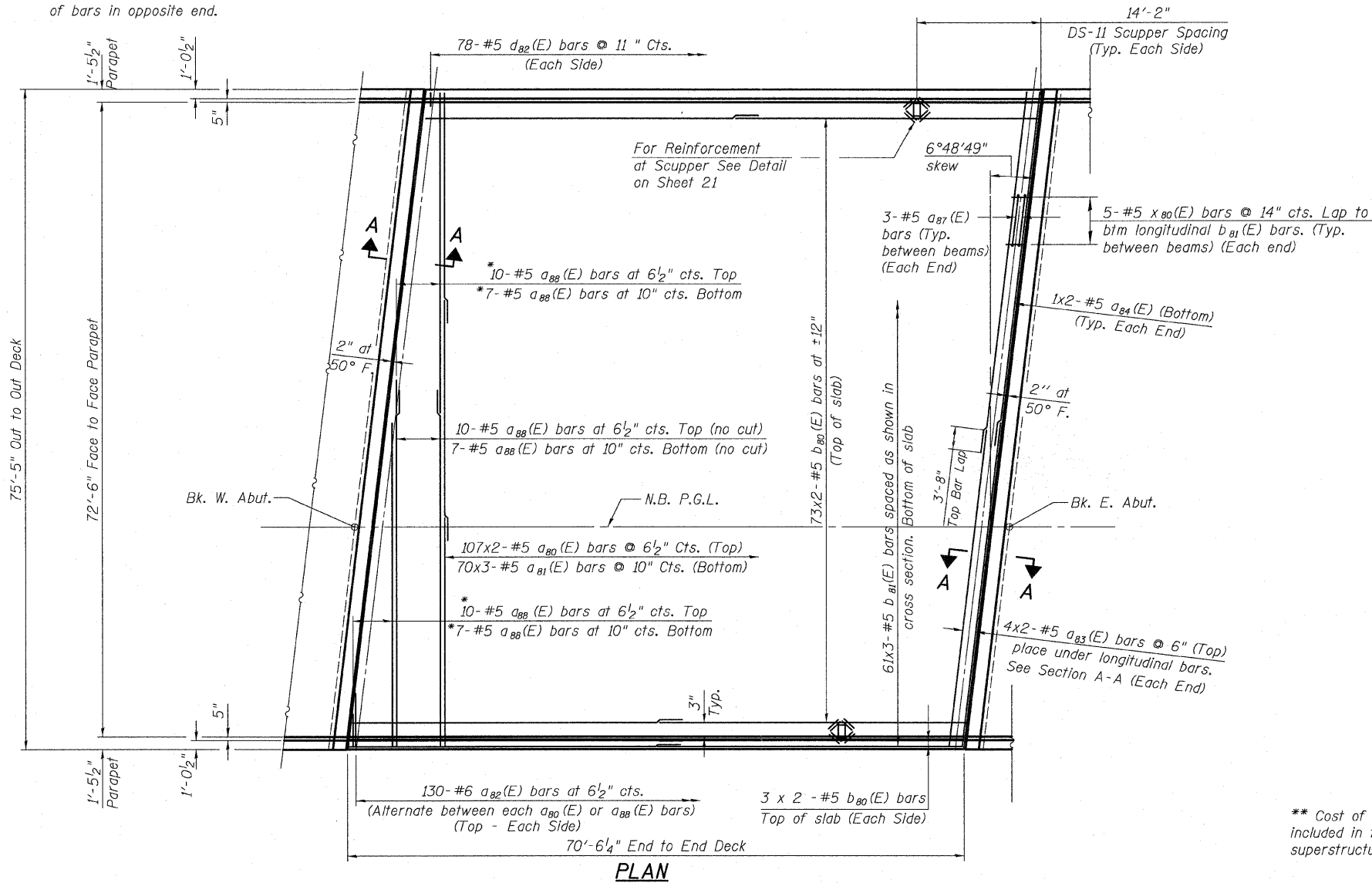


STATE OF ILLINOIS  
DEPARTMENT OF TRANSPORTATION

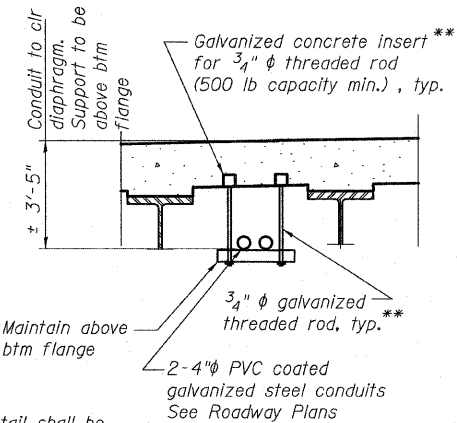
\*Order  $a_{88}(E)$  bars full length.  
Cut to fit skew and use remainder  
of bars in opposite end.



**MINIMUM BAR LAPS**

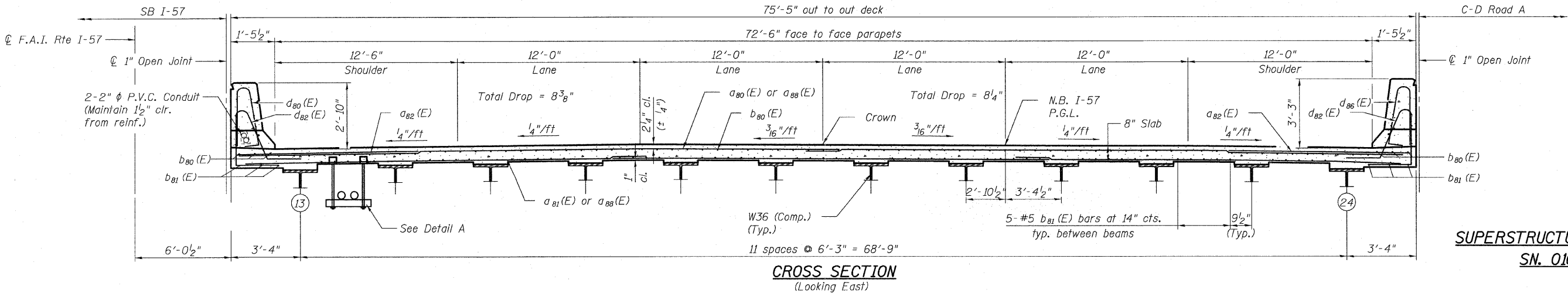
Bar	Lap
#5	3'-3"
#5	3'-8" (Top)

Notes:  
For notes see Sheet 17 of 62.



\*\* Cost of support detail shall be  
included in the cost of concrete  
superstructure.

**DETAIL A**  
(Not to Scale)



**SUPERSTRUCTURE - NB I-57**  
**SN. 016-1252**

TYLIN INTERNATIONAL

DESIGNED - DY	REVISIONS
CHECKED - AD,LS	NAME
DRAWN - DY,EI	DATE
CHECKED - LS,SP,PDF	
DATE - 03/18/10	

SHEET NO. 18  
62 SHEETS

F.A.I. RTE.	SECTION	COUNTY	TOTAL SHEETS	SHEET NO.
57	1414.2B	COOK	516	331
CONTRACT NO. 60J27				
FED. ROAD DIST. NO. 1 ILLINOIS FED. AID PROJECT				