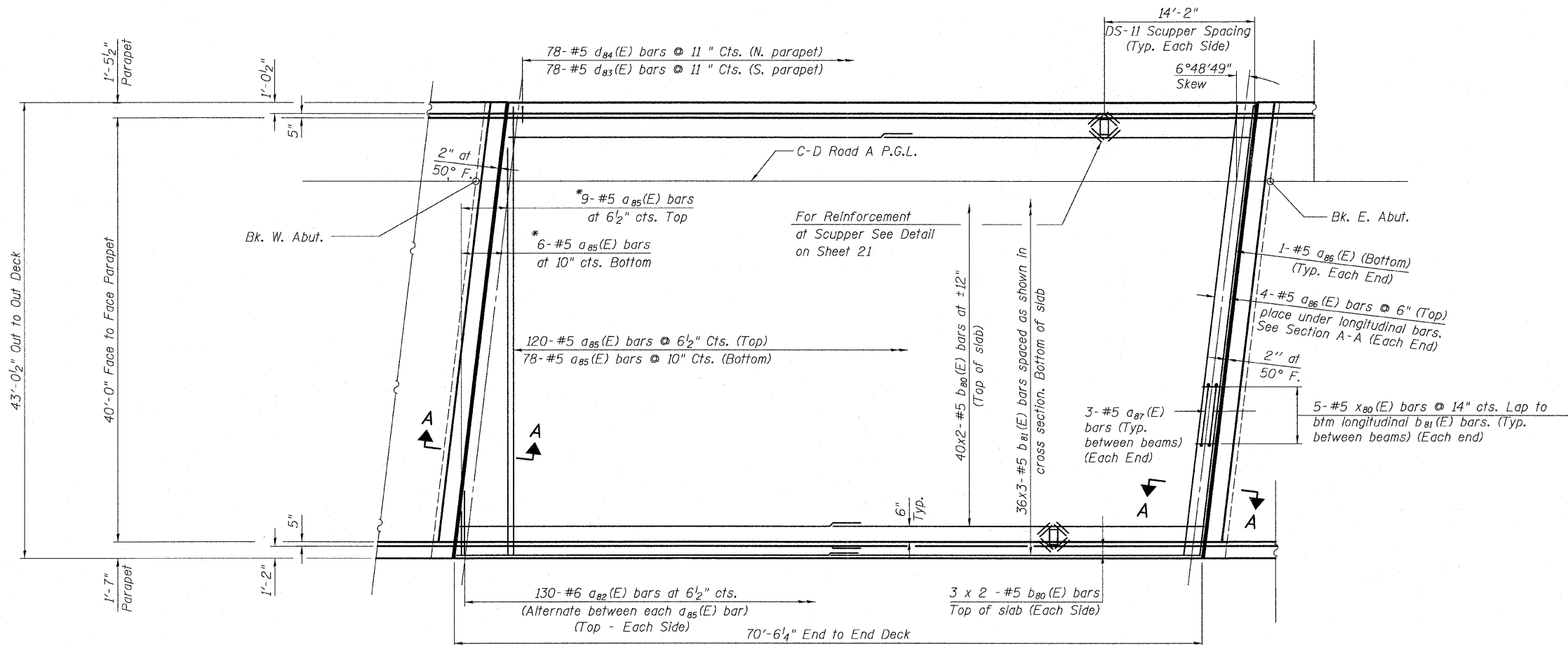
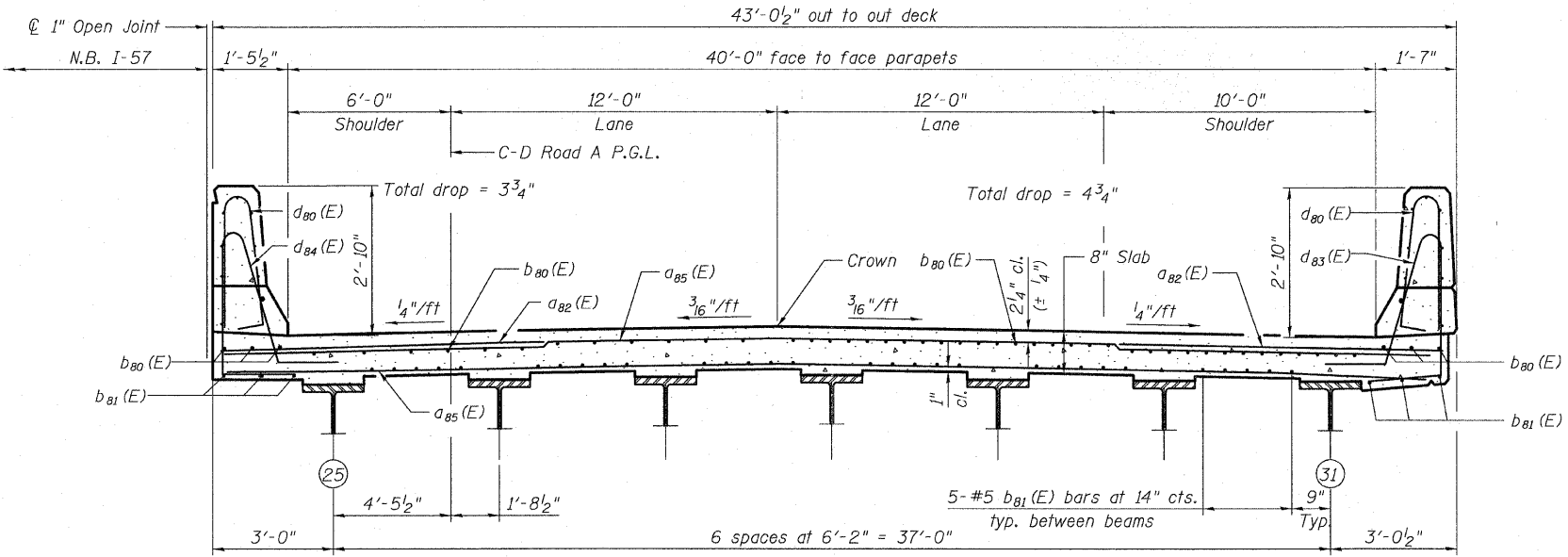


STATE OF ILLINOIS  
DEPARTMENT OF TRANSPORTATION

\* Order  $a_{85}(E)$  bars full length.  
Cut to fit skew and use remainder  
of bars in opposite end.



PLAN



CROSS SECTION  
(Looking East)

MINIMUM BAR LAPS

Bar	Lap
#5	3'-3"
#5	3'-8" (Top)

Notes:  
For notes see Sheet 17 of 62.

SUPERSTRUCTURE - C-D ROAD A  
SN. 016-1252

<b>TYLIN</b> INTERNATIONAL	DESIGNED - DY	REVISIONS		SHEET NO. 19  62 SHEETS	F.A.I. RTE.	SECTION	COUNTY	TOTAL SHEETS	SHEET NO.	
	CHECKED - AD,LS	NAME	DATE		57	1414.2B	COOK	516	332	
	DRAWN - DY,EI				CONTRACT NO. 60J27					
	CHECKED - LS,SP,PDF				FED. ROAD DIST. NO. 1 ILLINOIS FED. AID PROJECT					
	DATE - 03/18/10									

P:\1602540\67-294\STRUCTURAL\1-57-OVER-RAMP-BX\Final\submit\03-17-2010\Final\submit\03-17-2010\0161252-60J27-019-SUPER-RAMP-Adan 9:54:02 AM