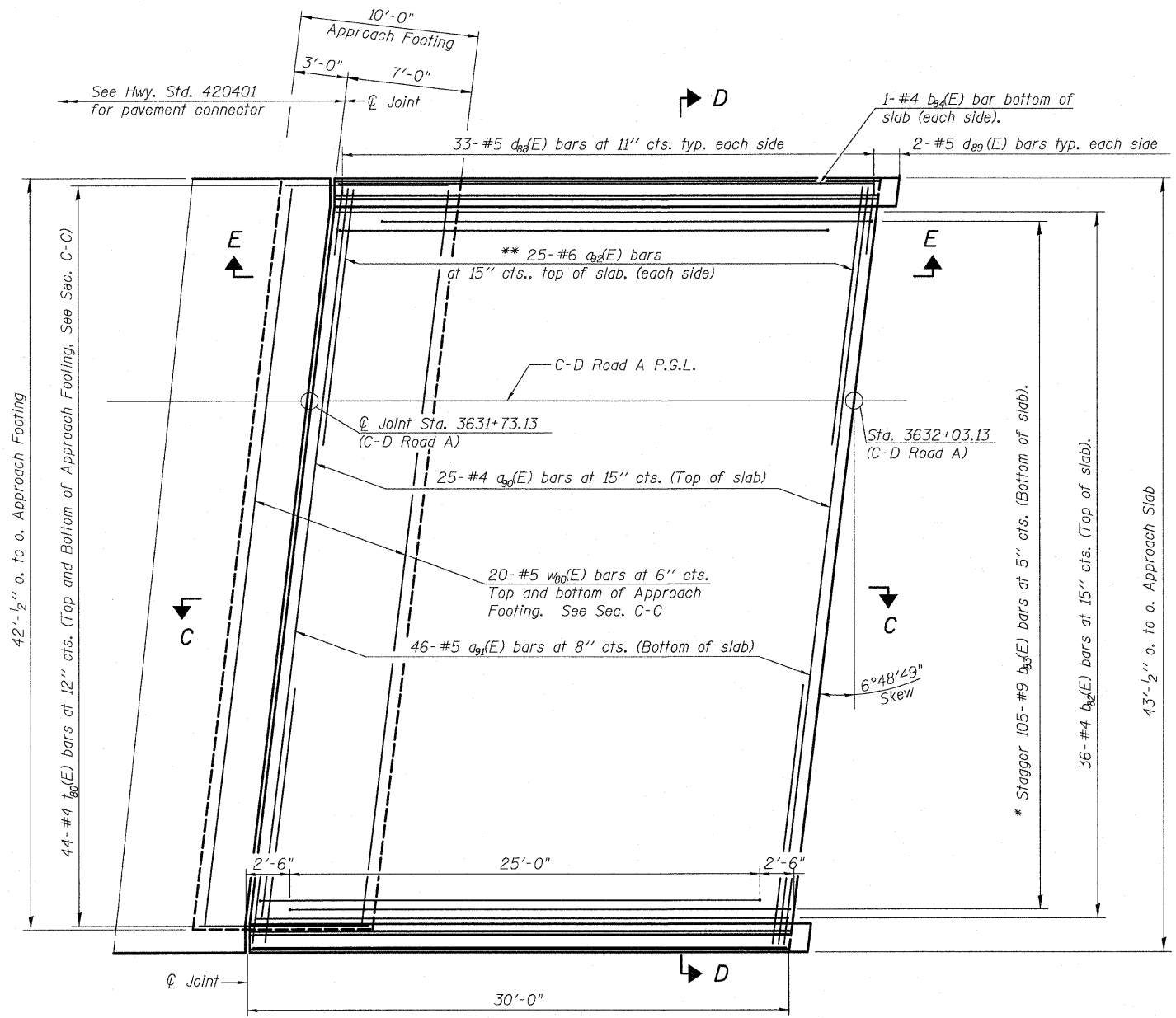


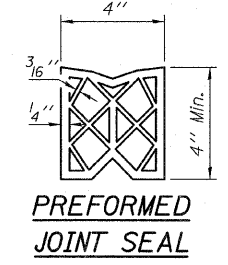
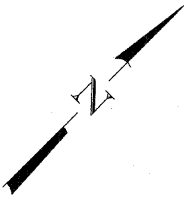
STATE OF ILLINOIS  
DEPARTMENT OF TRANSPORTATION

Notes:  
See sheet 23 of 62 for Sections C-C & D-D and View E-E.  
 $a_{9d}(E)$  and  $a_{9l}(E)$  bar spacings measured along  $\text{CL}$  Rdwy.



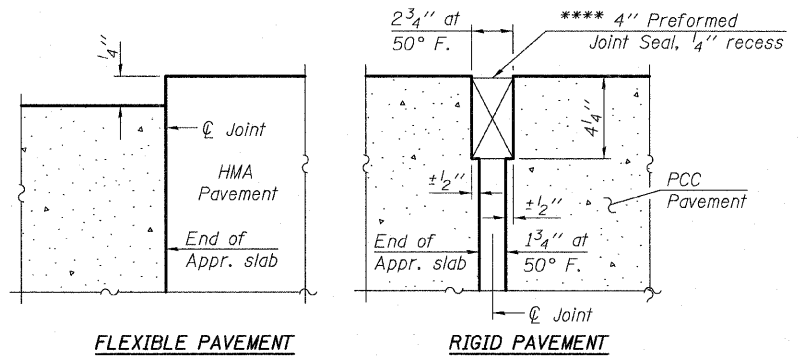
PLAN

\* Tilt #9  $b_{9l}(E)$  bars as required to maintain clearance.  
\*\* Space between  $a_{9d}(E)$  bars, typ. each parapet.



PREFORMED  
JOINT SEAL

\*\*\*\* Cost included with Concrete Superstructure.



DETAIL A

MINIMUM BAR LAPS

#4 Bar 2'-11"  
#5 Bar 3'-3"

WEST APPROACH SLAB C-D ROAD A - 1  
STRUCTURE NO. 016-1252

<b>TYLIN</b> INTERNATIONAL	DESIGNED - MRB	REVISIONS		SHEET NO. 22	F.A.I. RTE.	SECTION	COUNTY	TOTAL SHEETS	SHEET NO.	
	CHECKED - AMD	NAME	DATE		57	1414.2B	COOK	516	335	
	DRAWN - MRB				CONTRACT NO. 60J27					
	CHECKED - LS, SP, PDF				FED. ROAD DIST. NO. 1 ILLINOIS FED. AID PROJECT					
	DATE - 03/18/10									

P:\602540\57-294\STRUCTURAL\1-57-OVER RAMP B\Final\submit\03-17-2010\Final\submit\03172010\0161252-60J27-022-W\_APPR1.dgn 9:54:06 AM