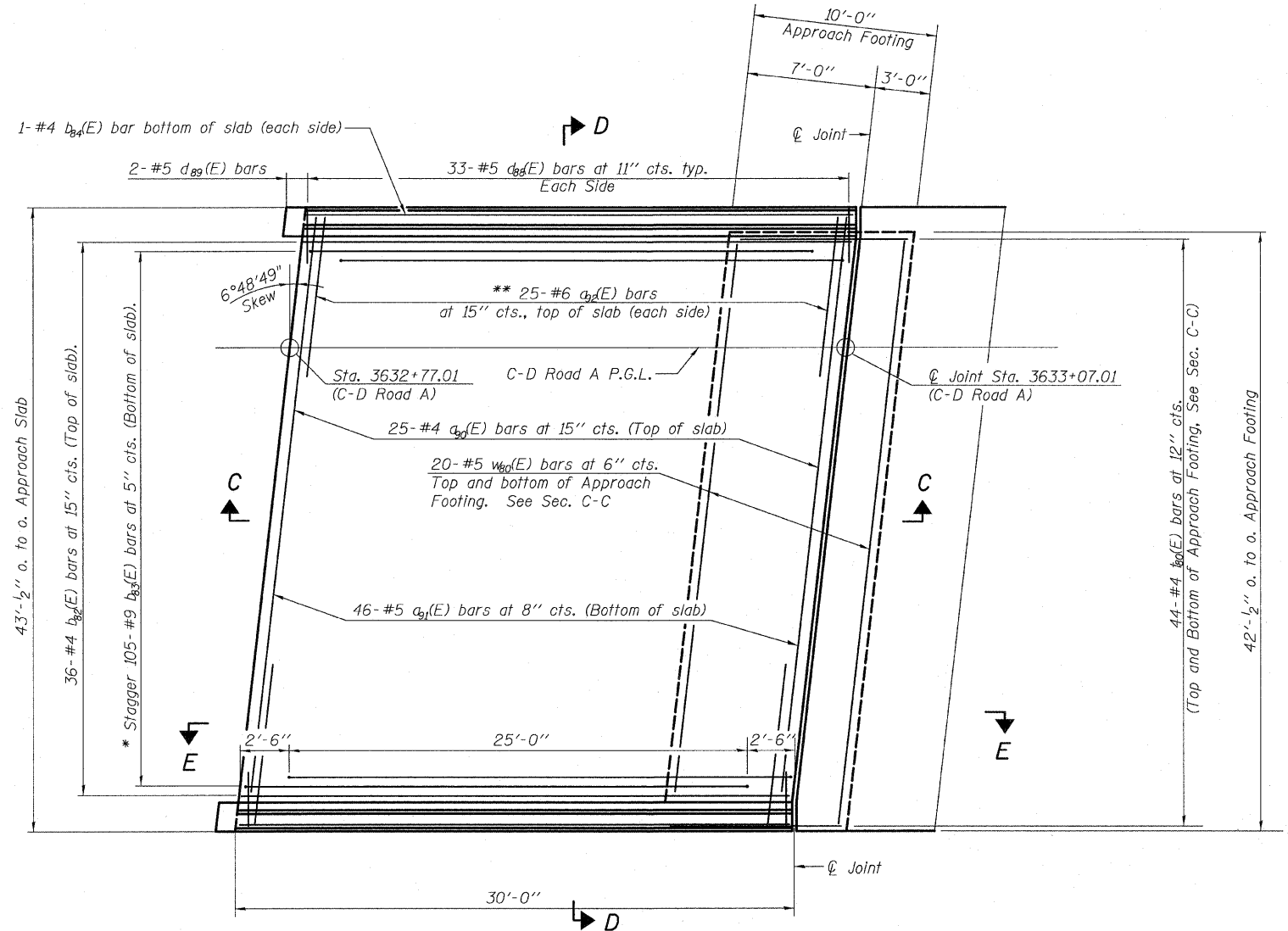


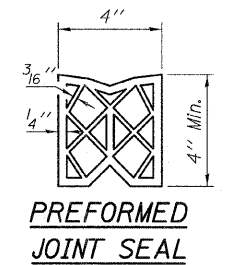
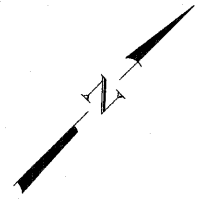
STATE OF ILLINOIS
DEPARTMENT OF TRANSPORTATION

Notes:
See sheet 29 of 62 for Sections C-C & D-D and Views E-E and F-F.
 $a_d(E)$ and $a_b(E)$ bar spacings measured along ϕ Rdwy.



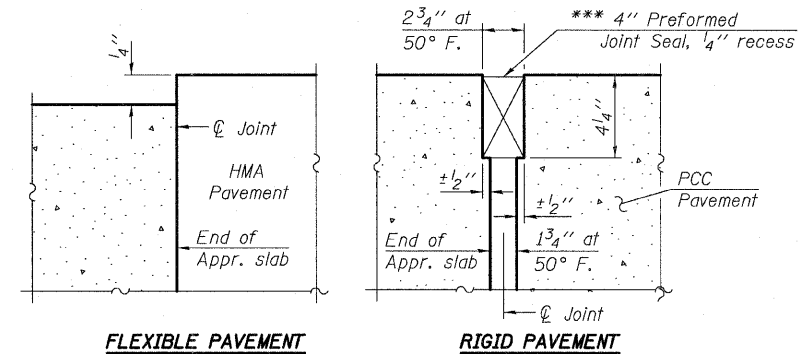
PLAN

* Tilt #9 bars as required to maintain clearance.
** Space between $a_d(E)$ bars, typ. each parapet.



PREFORMED
JOINT SEAL

*** Cost included with Concrete Superstructure.



FLEXIBLE PAVEMENT

RIGID PAVEMENT

DETAIL A

MINIMUM BAR LAPS

#4 Bar 2'-11"
#5 Bar 3'-3"

EAST APPROACH SLAB C-D ROAD A - 1
STRUCTURE NO. 016-1252

TYLIN INTERNATIONAL	DESIGNED - MRB	REVISIONS		SHEET NO. 28	F.A.I RTE. 57	SECTION 1414.2B	COUNTY COOK	TOTAL SHEETS 516	SHEET NO. 341
	CHECKED - AMD	NAME	DATE						
	DRAWN - MRB								
	CHECKED - LS,SP,PDF								
	DATE - 03/18/10								
				62 SHEETS	CONTRACT NO. 60J27				
				FED. ROAD DIST. NO. 1 ILLINOIS FED. AID PROJECT					

P:\602540\67-294\STRUCTURAL\1-57-OVER RAMP B\Final submittal_03-17-2010\Final submittal_03172010\0161252-60J27-028-E-APPRI.dgn 9:54:17 AM 3/18/2010