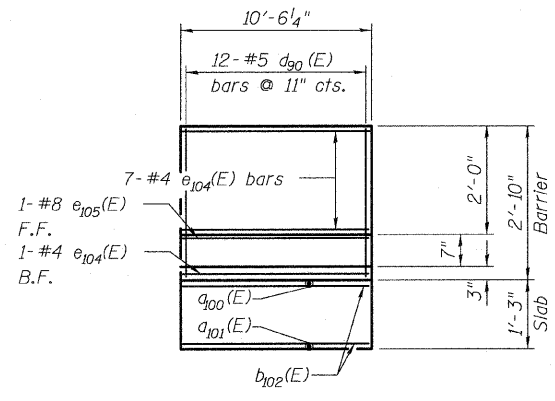
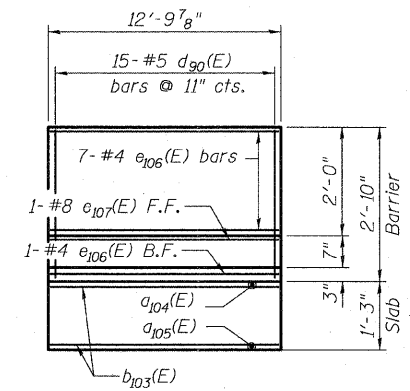


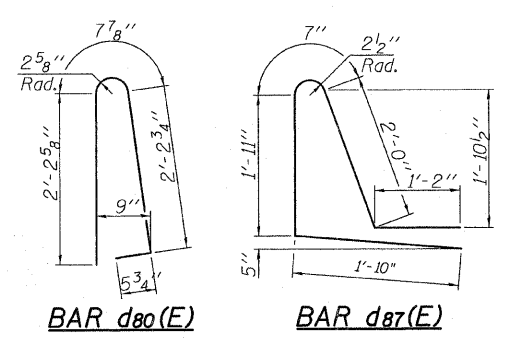
STATE OF ILLINOIS  
DEPARTMENT OF TRANSPORTATION



INSIDE ELEVATION OF NORTH BARRIER

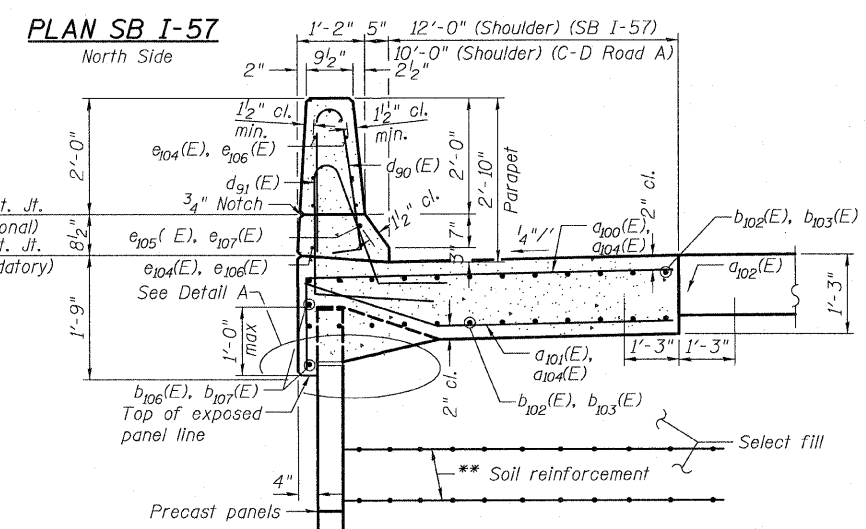
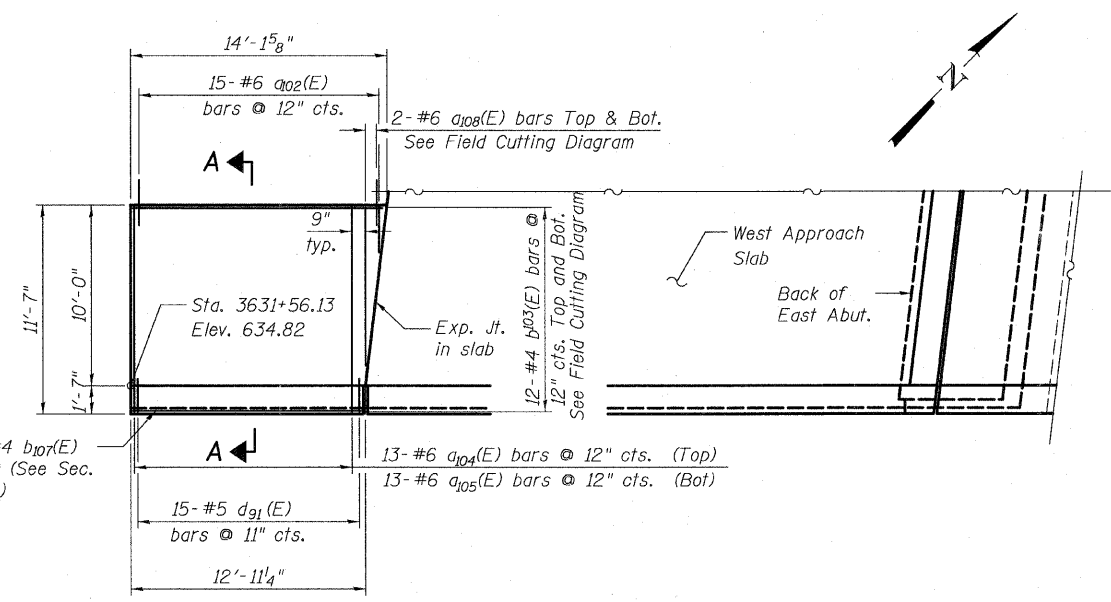
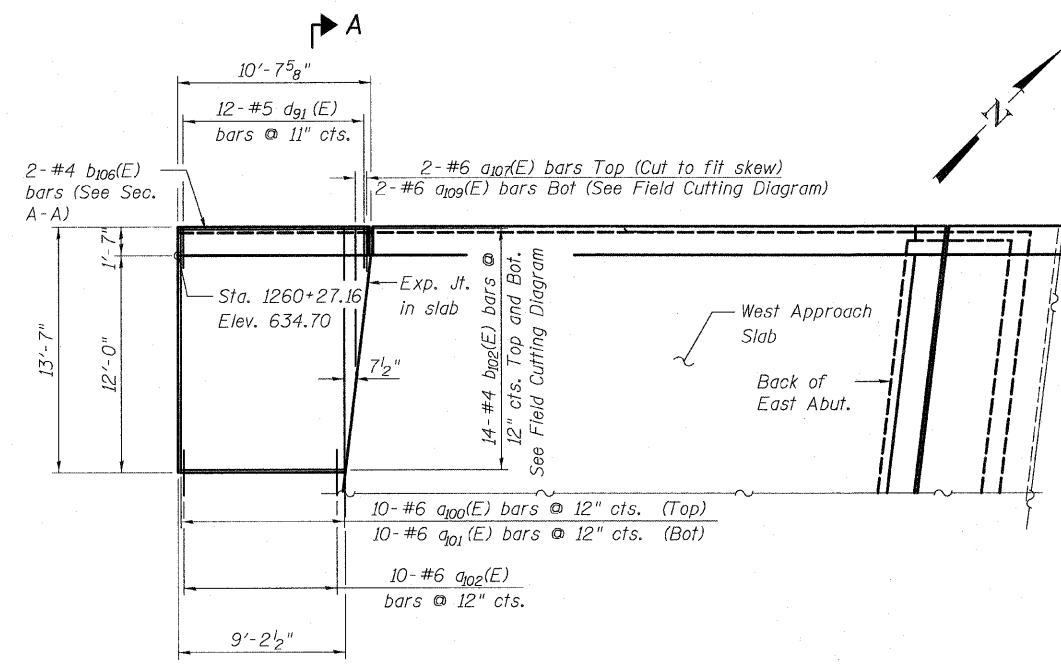


INSIDE ELEVATION OF SOUTH BARRIER



BILL OF MATERIAL

Bar	No.	Size	Length	Shape
a100(E)	10	#6	14'-8"	┌
a101(E)	10	#6	13'-3"	┌
a102(E)	25	#6	2'-6"	┌
a104(E)	13	#6	12'-8"	┌
a107(E)	13	#6	11'-3"	┌
a107(E)	2	#6	9'-0"	┌
a108(E)	4	#6	11'-2"	┌
a109(E)	2	#6	9'-11"	┌
b102(E)	28	#4	19'-3"	┌
b103(E)	24	#4	26'-6"	┌
b106(E)	2	#4	10'-3"	┌
b107(E)	2	#4	12'-7"	┌
d80(E)	27	#5	5'-7"	┌
d87(E)	27	#5	7'-6"	┌
e104(E)	8	#4	10'-3"	┌
e105(E)	1	#8	10'-3"	┌
e106(E)	8	#4	12'-6"	┌
e107(E)	1	#8	12'-6"	┌
Concrete Superstructure			Cu. Yds.	16.8
Reinforced Bars, Epoxy Coated			Pound	2,480

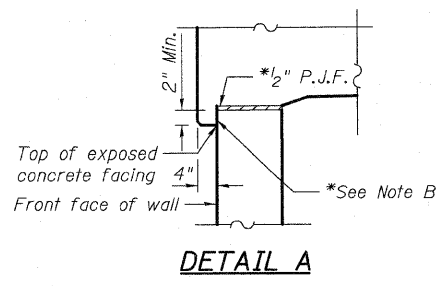


SECTION A-A

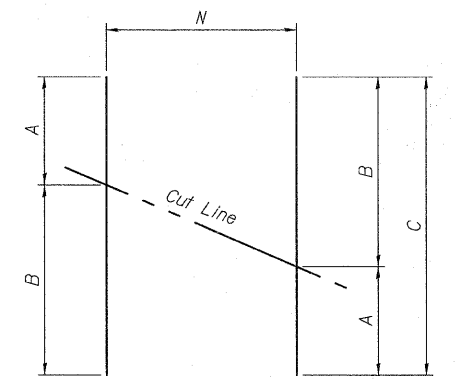
\*\*The M.S.E. wall supplier's internal stability design shall account for the anchorage slab's bearing pressure surcharge of 1.0 ksf and horizontal sliding force of 0.5 kips/ft. of wall.

PLAN C-D ROAD A South Side

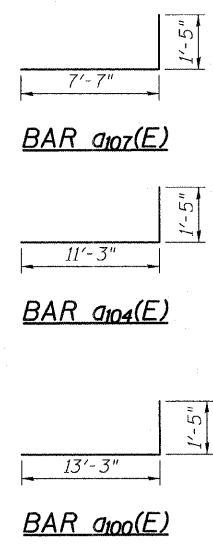
\*Cost included with Concrete Superstructure.



Note B:  
\*Bond breaker membrane on top and front of fascia wall.



FIELD CUTTING DIAGRAM



Bar	N	A	B	C
a108(E)	2	2'-5"	8'-9"	11'-2"
a109(E)	1	2'-4"	7'-7"	9'-11"
b102(E)	14	8'-11"	10'-4"	19'-3"
b103(E)	12	12'-8"	13'-10"	26'-6"

Order bars full length. Cut as shown and use remainder of bars in opposite face

WEST ANCHORAGE SLAB DETAILS  
S.N. 016-1252

TYLIN INTERNATIONAL

DESIGNED -	DY	REVISIONS	DATE
CHECKED -	AD,LS	NAME	DATE
DRAWN -	DY,EI		
CHECKED -	LS,SP,PDF		
DATE -	03/18/10		

SHEET NO. 34	F.A.I. RTE. 57	SECTION 1414.2B	COUNTY COOK	TOTAL SHEETS 516	SHEET NO. 347
62 SHEETS	FED. ROAD DIST. NO. 1 ILLINOIS		CONTRACT NO. 60J27		
FED. AID PROJECT					

P:\60254057-294\STRUCTURAL\I-57 OVER RAMP.B\Final submittal\_03-17-2010\Final submittal\_03172010\0161251-60J27-034-W.ANCH.SLAB.dgn 3/18/2010 9:54:27 AM