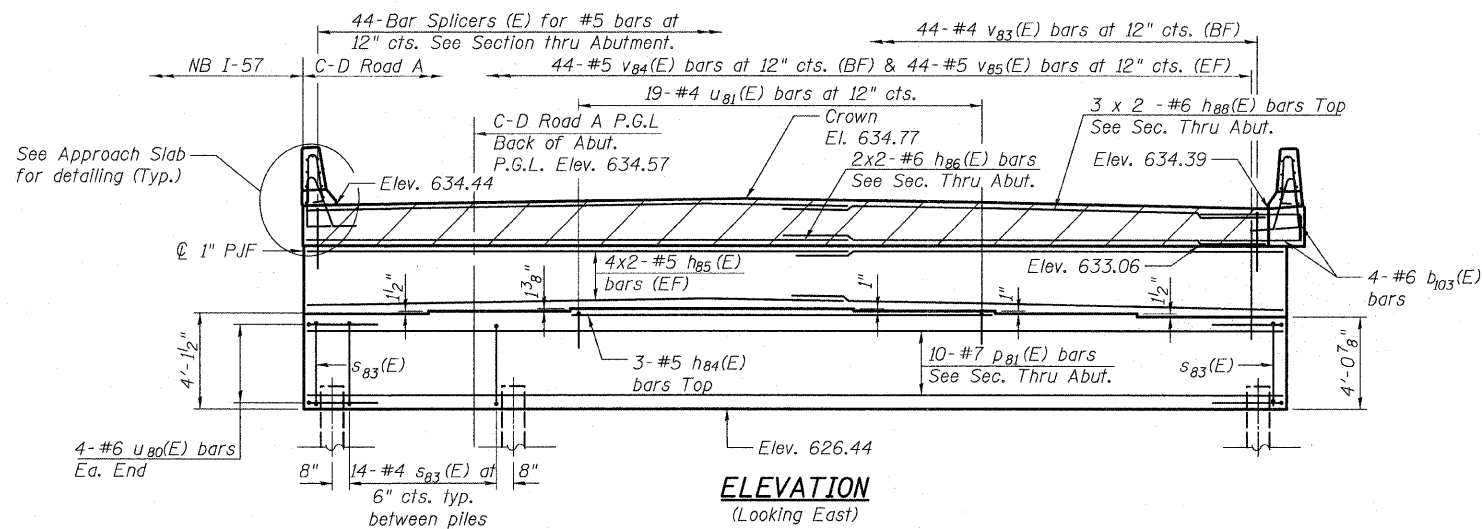
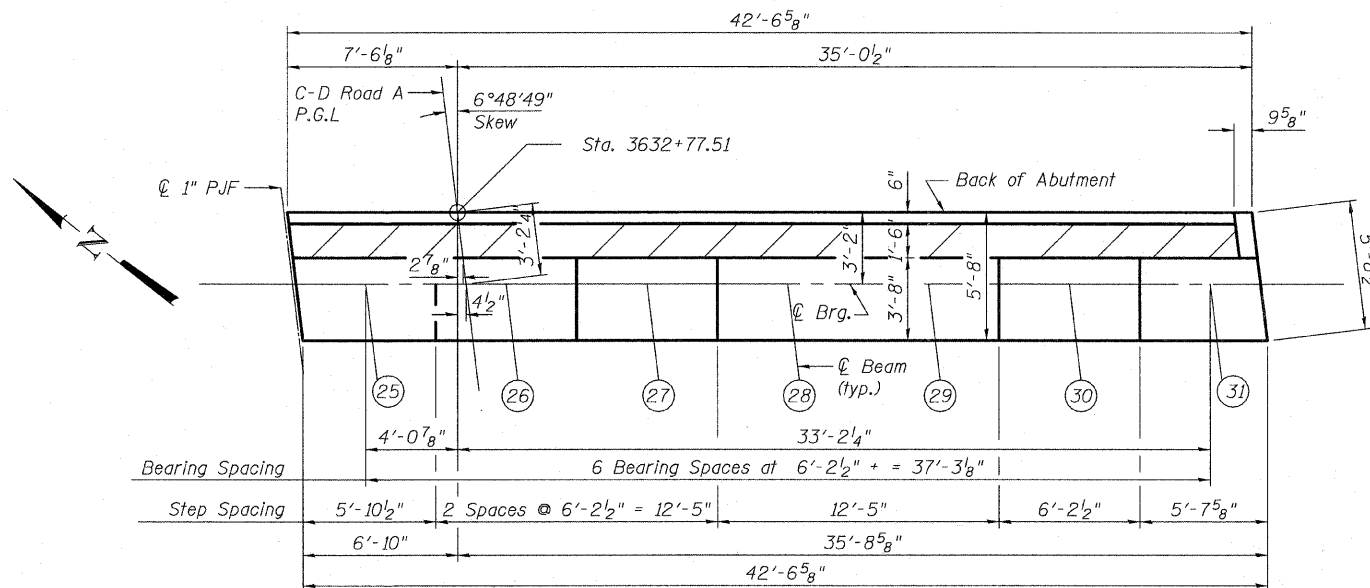


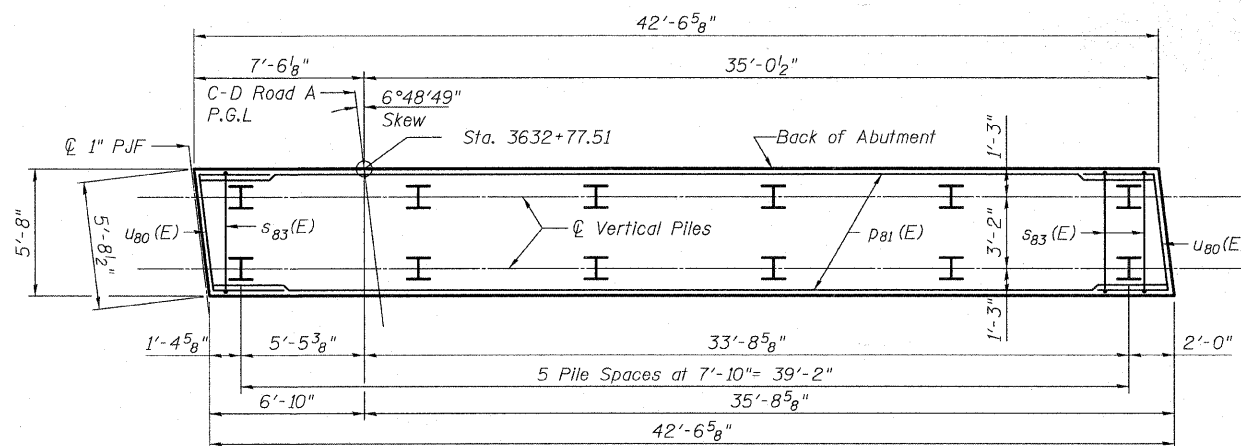
STATE OF ILLINOIS
DEPARTMENT OF TRANSPORTATION



ELEVATION
(Looking East)



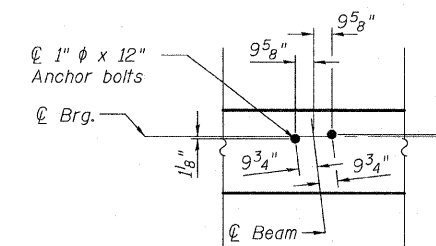
TOP VIEW



PLAN-PILE CAP

**BRIDGE SEAT
ELEVATIONS**

Beam	Seat Elevation
25	630.56
26	630.68
27	630.79
28	630.79
29	630.71
30	630.63
31	630.51



**ANCHOR BOLT
LAYOUT**

NOTES:

See Sheet 50 of 62 for abutment section, pile data and Bill of Material.
Space reinforcement in cap to miss anchor bolts.
Pour steps monolithically with cap.
Hatched area to be poured after superstructure forms have been removed. Quantity of concrete included with Concrete Superstructure.
Bars indicated thus 20 x 3- #7 etc. indicates 20 lines of bars with 3 lengths per line.
All edges shall have standard 3/4" chamfers except as noted.
Piles shall be driven prior to placement of the reinforced select fill and coated with coal tar epoxy from the bottom of the select fill to 1" above the base of the abutment. The cost of the coal tar epoxy coating shall be included with the cost of the Furnishing Piles.

**MINIMUM BAR
LAPS**

Bar	Lap	Notes
#4	2'-7"	
#5	3'-3"	
#6	3'-10"	
#6	4'-5" (Top)	for h ₈₈ (E)
#7	5'-2"	
#7	5'-10" (Top)	

EAST ABUTMENT - 1
S.N. 016-1252

TYLIN INTERNATIONAL

DESIGNED	BY	REVISIONS	
CHECKED	AD,LS	NAME	DATE
DRAWN	DY,EI		
CHECKED	LS,SP,PDF		
DATE	03/18/10		

SHEET NO. 47	F.A.I. RTE.	SECTION	COUNTY	TOTAL SHEETS	SHEET NO.
	57	1414.2B	COOK	516	360
62 SHEETS	CONTRACT NO. 60J27				
FED. ROAD DIST. NO. 1 ILLINOIS FED. AID PROJECT					