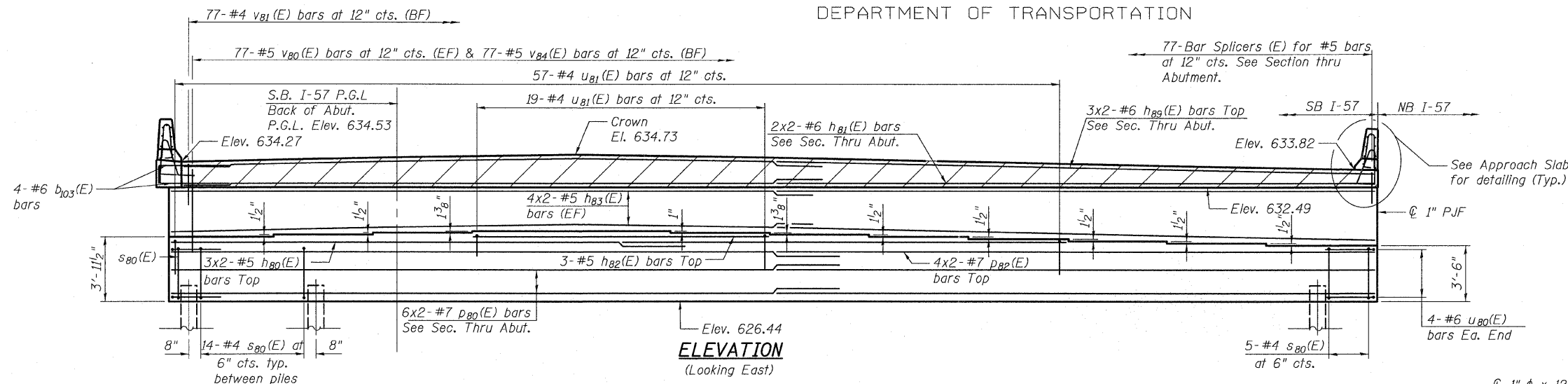


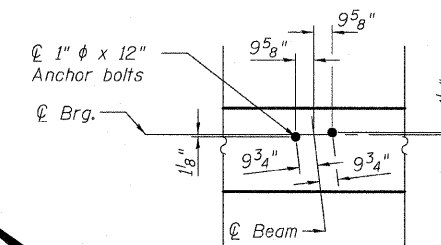
STATE OF ILLINOIS  
DEPARTMENT OF TRANSPORTATION

**BRIDGE SEAT  
ELEVATIONS**

Beam	Seat Elevation
1	630.40
2	630.53
3	630.65
4	630.76
5	630.76
6	630.68
7	630.57
8	630.44
9	630.32
10	630.19
11	630.07
12	629.94



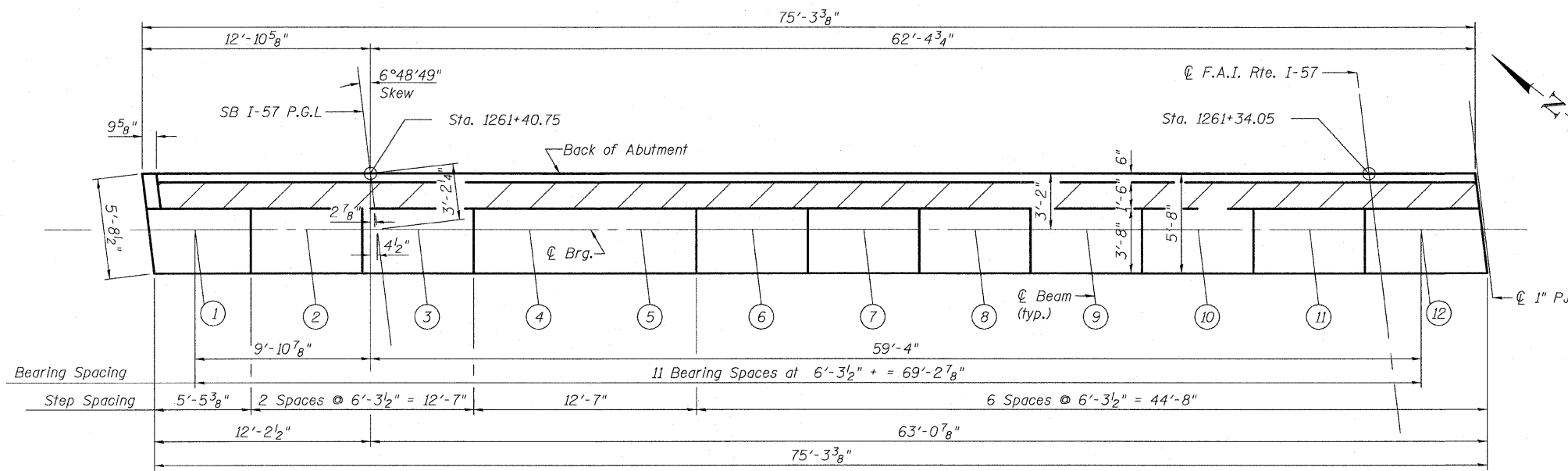
**ELEVATION**  
(Looking East)



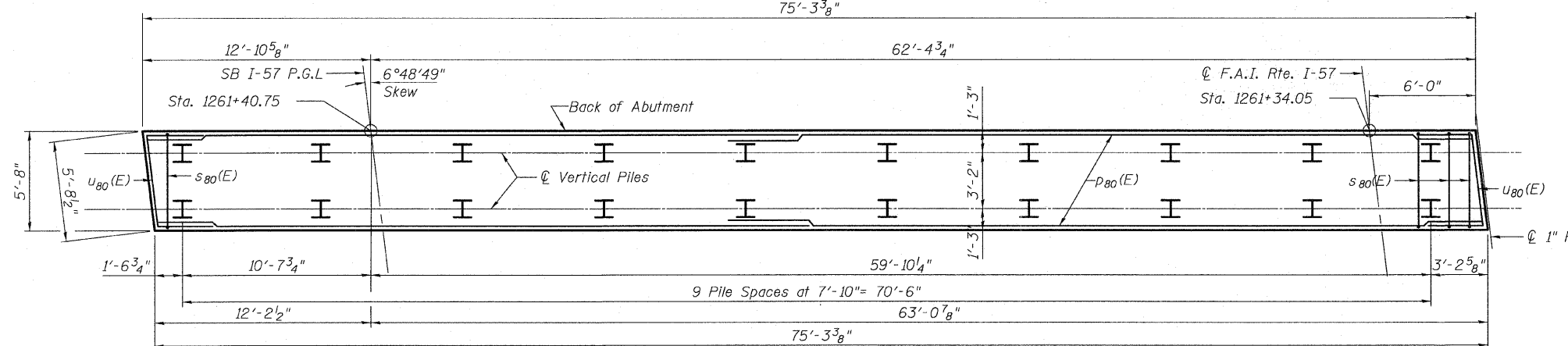
**ANCHOR BOLT  
LAYOUT**

**NOTES:**

See Sheet 50 of 62 for abutment section, pile data and Bill of Material.  
Space reinforcement in cap to miss anchor bolts.  
Pour steps monolithically with cap.  
Hatched area to be poured after superstructure forms have been removed. Quantity of concrete included with Concrete Superstructure.  
Bars indicated thus 20 x 3- #7 etc. indicates 20 lines of bars with 3 lengths per line.  
All edges shall have standard 3/4\"/>



**TOP VIEW**



**PLAN-PILE CAP**

**MINIMUM BAR  
LAPS**

Bar	Lap	Notes
#4	2'-7"	
#5	3'-3"	
#6	3'-10"	
#6	4'-5" (Top)	for h_B1(E)
#7	5'-2"	
#7	5'-10" (Top)	for p_B2(E)

**EAST ABUTMENT - 3  
S.N. 016-1252**

<b>TYLIN INTERNATIONAL</b>	DESIGNED - DY	REVISIONS		SHEET NO. 49	F.A.I. RTE. 57	SECTION 1414.2B	COUNTY COOK	TOTAL SHEETS	SHEET NO.
	CHECKED - AD,LS	NAME	DATE					516	362
	DRAWN - DY,EI							CONTRACT NO. 60J27	
	CHECKED - LS,SP,PDF							FED. ROAD DIST. NO. 1 ILLINOIS FED. AID PROJECT	
	DATE - 03/18/10								

P:\1602540\57-294\STRUCTURAL\1-57-OVER-RAMP-BX\Final\submital\_03-17-2010\Final\submital\_03-17-2010\0161252-60J27-049-E-ABUT-SB.dgn 9:54:52 AM 3/18/2010