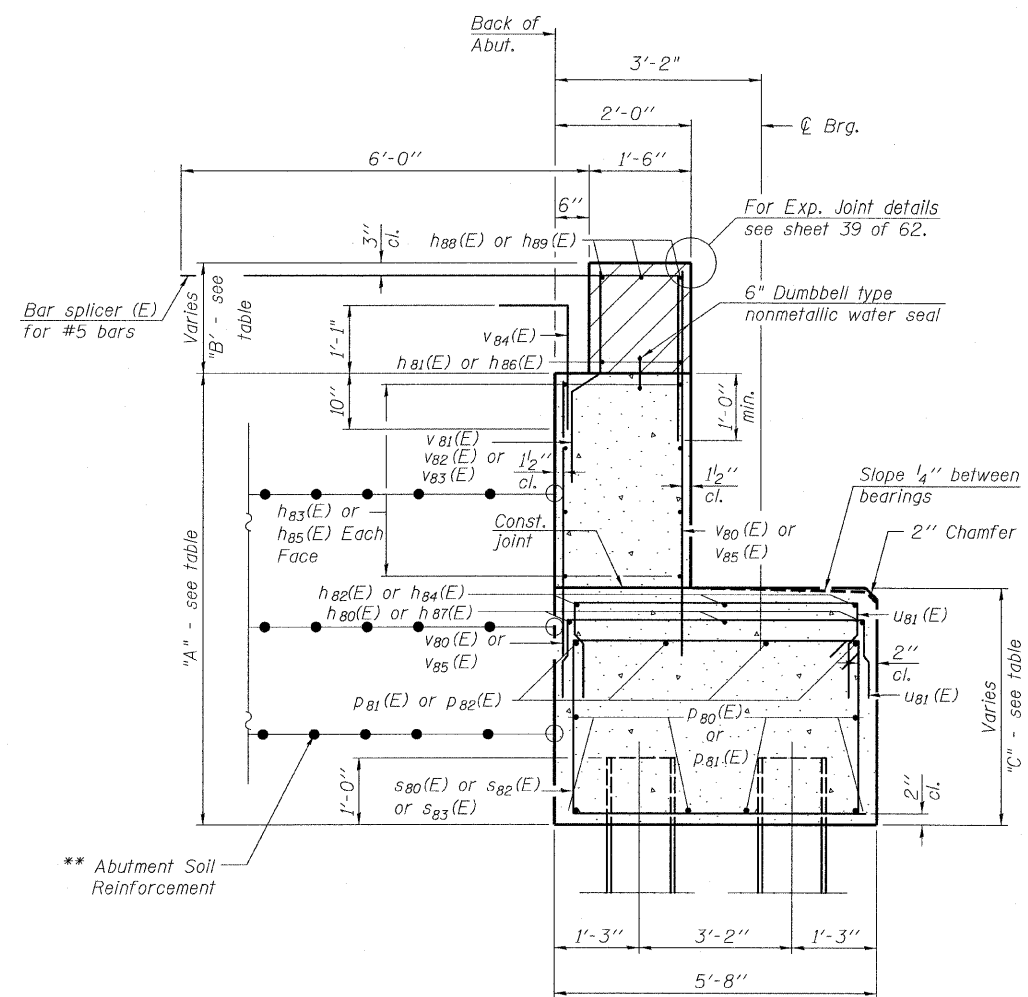


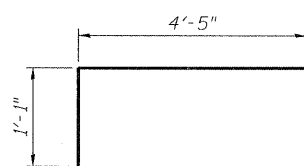
STATE OF ILLINOIS
DEPARTMENT OF TRANSPORTATION



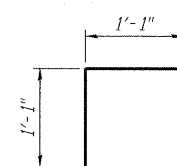
SEC. THRU ABUT.

** The M.S.E. wall supplier shall design the abutment soil reinforcement to resist a horizontal force of 2 kips/ft. Contractor shall coordinate abutment construction with construction of MSE retaining wall.

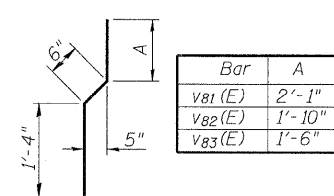
Location	A	B	C
C-D Road A	6'-7 ¹ / ₂ "	1'-4" to 1'-8 ¹ / ₂ "	4'-0 ³ / ₄ " to 4'-4 ¹ / ₈ "
NB I-57	6'-2 ³ / ₈ "	1'-4" to 2'-0 ³ / ₄ "	3'-7 ⁵ / ₈ " to 4'-3 ¹ / ₂ "
SB I-57	6'-0 ⁵ / ₈ "	1'-4" to 2'-2 ⁷ / ₈ "	3'-6" to 4'-3 ⁷ / ₈ "



BAR b103(E)



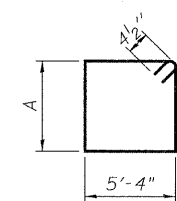
BAR v84(E)



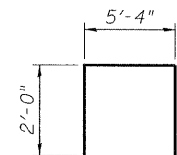
BAR v81(E), v82(E) & v83(E)

Bar	A
s80(E)	3'-2"
s82(E)	3'-5"
s83(E)	3'-9"

BARS s80(E), s82(E) & s83(E)



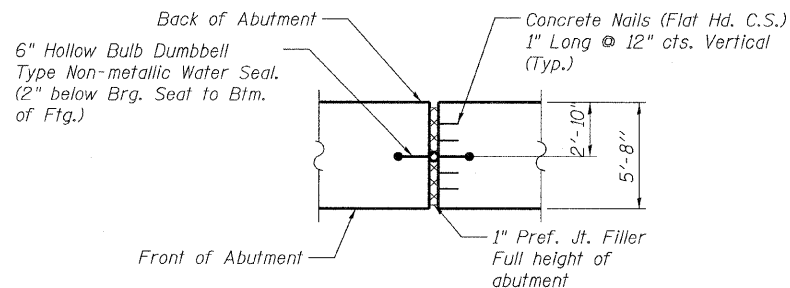
BAR u80(E)



BARS u81(E)

PILE DATA

Type: HP12x53 with Pile Shoes
Nominal Required Bearing: 419 kips
Factored Resistance Available: 230 kips
Est. Length: 33 ft
No. Production Piles: 51
No. Test Piles: 1



SEC. THRU 1" EXP. JT. FILLER

Cost of Water Seal included in the cost of Concrete Structures.

**EAST ABUTMENT
BILL OF MATERIAL**

Bar	No.	Size	Length	Shape
b103(E)	8	#6	6'-4"	Γ
h80(E)	6	#5	29'-9"	—
h81(E)	8	#6	39'-9"	—
h82(E)	6	#5	18'-6"	—
h83(E)	32	#5	39'-10"	—
h84(E)	3	#5	18'-2"	—
h85(E)	16	#5	22'-9"	—
h86(E)	4	#6	22'-8"	—
h87(E)	3	#5	43'-7"	—
h88(E)	6	#6	23'-9"	—
h89(E)	12	#6	40'-1"	—
p80(E)	24	#7	40'-6"	—
p81(E)	10	#7	42'-3"	—
p82(E)	16	#7	40'-10"	—
s80(E)	132	#4	17'-9"	□
s82(E)	132	#4	18'-3"	□
s83(E)	72	#4	18'-11"	□
u80(E)	24	#6	8'-5"	—
u81(E)	158	#4	7'-4"	—
v80(E)	154	#5	5'-9"	—
v81(E)	77	#4	3'-11"	—
v82(E)	77	#4	3'-8"	—
v83(E)	44	#4	3'-4"	—
v84(E)	198	#5	3'-10"	Γ
v85(E)	242	#5	5'-11"	—
Structure Excavation		Cu. Yd.	4,010	
Concrete Structures		Cu. Yd.	203.4	
Reinforcement Bars, Epoxy Coated		Pound	16,880	
Furnishing Steel Piles, HP12x53		Foot	1,734	⚠
Pile Shoes		Each	52	
Driving Piles		Foot	1,734	⚠
Test Pile, HP12x53		Each	1	
Concrete Sealer		Sq. Ft.	1,610	

For details of Bar Splicers, see sheet 55 of 62.
For details of piles, see sheet 56 of 62.

**EAST ABUTMENT DETAILS
S.N. 016-1252**

TYLIN INTERNATIONAL	DESIGNED - DY	REVISIONS		SHEET NO. 50	F.A.I. RTE. 57	SECTION 1414.2B	COUNTY COOK	TOTAL SHEETS 516	SHEET NO. 363
	CHECKED - AD,LS	NAME	DATE						
	DRAWN - DY,EI								
	CHECKED - LS,SP,PDF								
DATE - 03/18/10	REVISED		05/24/10	62 SHEETS	CONTRACT NO. 60J27				
FED. ROAD DIST. NO. 1 ILLINOIS FED. AID PROJECT									