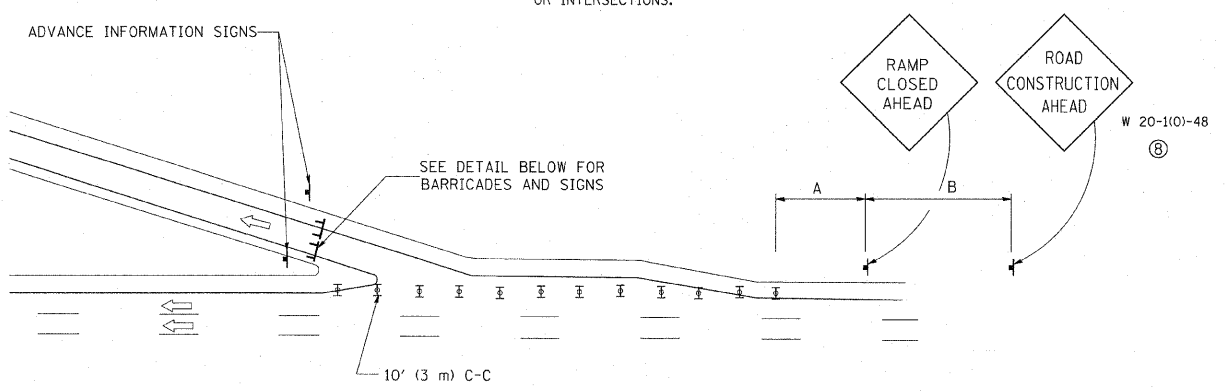
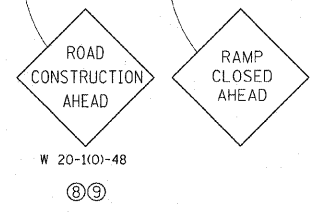


**ENTRANCE RAMP CLOSURE**

**SIGN SPACING TABLE**

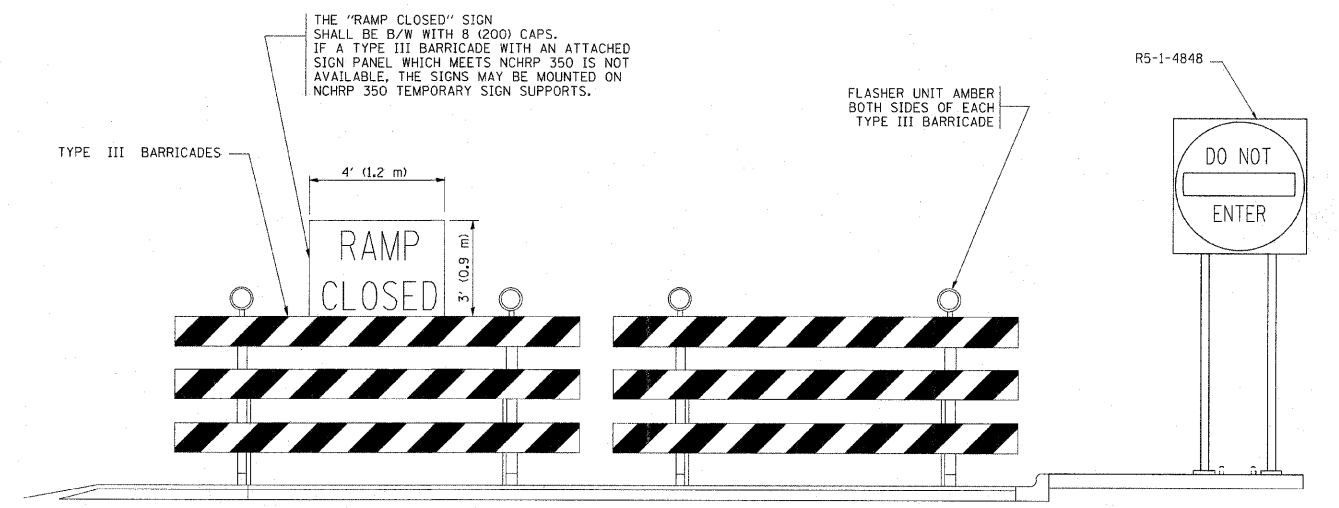
| FACILITY                | DISTANCE BETWEEN SIGNS |                  |
|-------------------------|------------------------|------------------|
|                         | A                      | B                |
| EXPRESSWAY<br>>24 HOURS | 1000'<br>(300 m)       | 1500'<br>(450 m) |
| EXPRESSWAY<br>≤24 HOURS | 500'<br>(150 m)        | 500'<br>(150 m)  |
| ARTERIAL<br>≥45 MPH     | 350'<br>(100 m)        | 350'<br>(100 m)  |
| ARTERIAL<br><45 MPH     | 150'<br>(45 m)         | 150'<br>(45 m)   |

DISTANCES MAY BE SHORTENED DEPENDING UPON THE PROXIMITY OF ADJACENT RAMPS OR INTERSECTIONS.

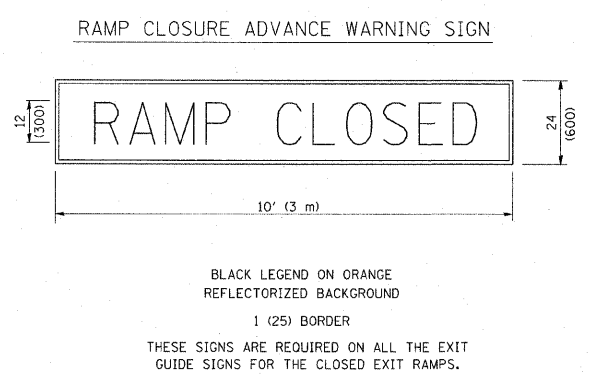


**EXIT RAMP CLOSURE**

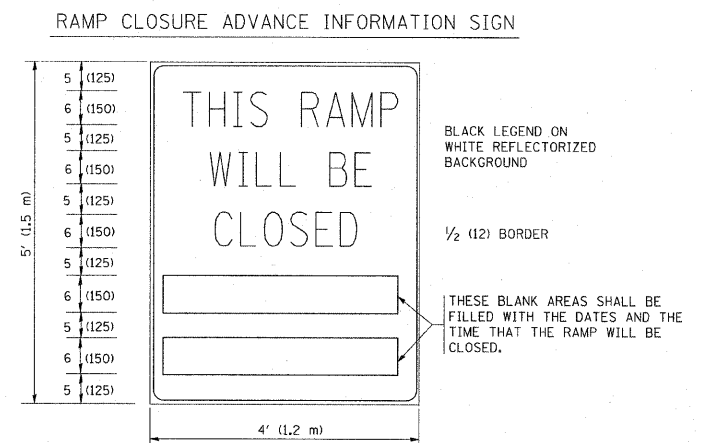
- SYMBOLS**
- ⊥ TYPE II BARRICADE, DRUM OR VERTICAL BARRICADE WITH STEADY BURN MONO-DIRECTIONAL LIGHT
  - ⊥ TYPE III BARRICADE WITH FLASHING LIGHT



**DETAIL FOR REQUIRED BARRICADES & SIGNS**



BLACK LEGEND ON ORANGE REFLECTORIZED BACKGROUND  
1 (25) BORDER  
THESE SIGNS ARE REQUIRED ON ALL THE EXIT GUIDE SIGNS FOR THE CLOSED EXIT RAMPS.



THESE SIGNS ARE REQUIRED ON BOTH SIDES OF THE RAMP, MINIMUM OF 1 WEEK IN ADVANCE OF THE CLOSURE.

**GENERAL NOTES:**

- ① CONES MAY BE SUBSTITUTED FOR DRUMS OR TYPE II BARRICADES DURING DAY OPERATIONS. CONES SHALL BE A MINIMUM OF 28 (700) HIGH.
- ② STEADY BURN LIGHTS WILL NOT BE REQUIRED FOR DAY OPERATIONS.
- ③ A FLAGGER SHALL BE POSITIONED AT EACH CLOSED RAMP THAT IS OPEN TO CONSTRUCTION VEHICLES.
- ④ ALL ROUTE MARKERS AND TRAILBLAZER ASSEMBLIES WHICH DIRECT MOTORISTS TO A CLOSED ENTRANCE RAMP SHALL BE COVERED.
- ⑤ THE SIGNING AND BARRICADING WHICH IS REQUIRED BY THIS DETAIL SHALL BE INCLUDED IN THE COST OF TRAFFIC CONTROL AND PROTECTION (EXPRESSWAYS).
- ⑥ AUTHORIZATION FROM THE DISTRICT'S BUREAU OF TRAFFIC IS REQUIRED FOR ALL RAMP CLOSURES.
- ⑦ THE RAMP CLOSURE ADVANCE INFORMATION SIGNS SHALL BE ERECTED IF THE CLOSURE TIME EXCEEDS TWENTY-FOUR (24) HOURS. ADDITIONAL ADVANCE WARNING SIGNS ON EXIT GUIDE SIGNING WILL BE REQUIRED FOR EXIT RAMP CLOSURES THAT EXCEED TWENTY-FOUR (24) HOURS IN LENGTH.
- ⑧ ROAD CONSTRUCTION AHEAD SIGNS MAY BE OMITTED WHEN THIS DETAIL IS USED IN CONJUNCTION WITH OTHER TRAFFIC CONTROL THAT INCLUDES A ROAD CONSTRUCTION AHEAD SIGN.
- ⑨ ARTERIAL ROAD CONSTRUCTION AHEAD SIGNS MAY BE OMITTED ON CLOSURES LESS THAN 24 HOURS IN DURATION.

ALL DIMENSIONS ARE IN INCHES (MILLIMETERS) UNLESS OTHERWISE SHOWN.

|                                       |                   |                |                         |   |   |   |                         |                    |              |           |
|---------------------------------------|-------------------|----------------|-------------------------|---|---|---|-------------------------|--------------------|--------------|-----------|
| FILE NAME = W:\dist\td\22x34\td08.dgn | USER NAME = lejpa | DESIGNED - DWS | REVISED - DWS/JAF 12-02 | <b>STATE OF ILLINOIS<br/>DEPARTMENT OF TRANSPORTATION</b> | <b>FREWAY ENTRANCE AND EXIST RAMP<br/>CLOSURE DETAILS</b> | F.A.T. RTE.                                     | SECTION                 | COUNTY             | TOTAL SHEETS | SHEET NO. |
|                                       |                   | DRAWN -        | REVISED - JAF 02-06     |   |   | 57  | 1414.2B                 | COOK               | 516          | 385       |
|                                       |                   | CHECKED -      | REVISED - SPB 01-07     |   |   | TC-08   |                         | CONTRACT NO. 60321 |              |           |
|                                       |                   | DATE - 02-83   | REVISED - SPB 12-09     |   |   | SCALE: NONE                                     | SHEET NO. 1 OF 1 SHEETS | STA.               | TO STA.      |           |
|                                       |                   |                |                         |   |   | FED. ROAD DIST. NO. 1 ILLINOIS FED. AID PROJECT |                         |                    |              |           |