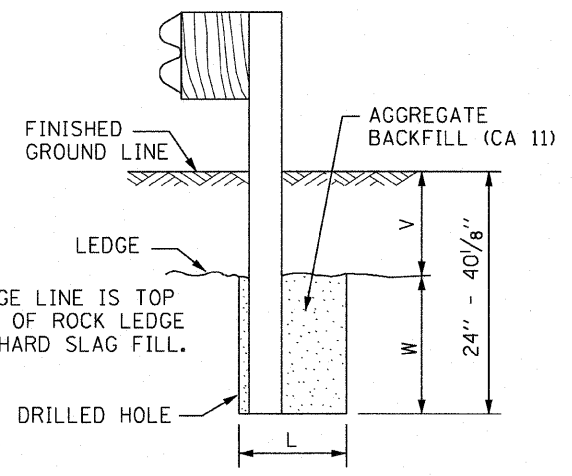


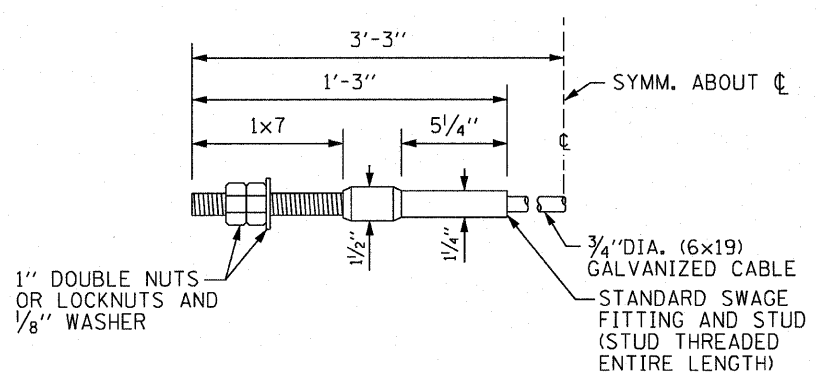
PLAN

V	W	L	
		STEEL POST	WOOD POST
0 - 16 1/8"	24"	21"	23"
> 16 1/8" - 28 1/8"	12"	8"	10"
> 28 1/8" - 40 1/8"	12" - 0	8"	10"



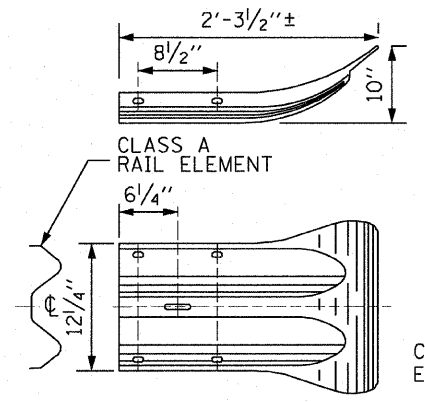
ELEVATION

FOOTING FOR POST WHEN IMPERVIOUS MATERIAL IS ENCOUNTERED

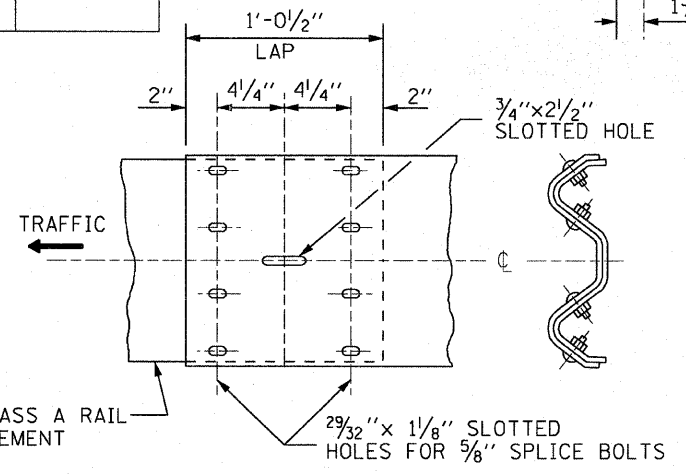


CABLE ASSEMBLY

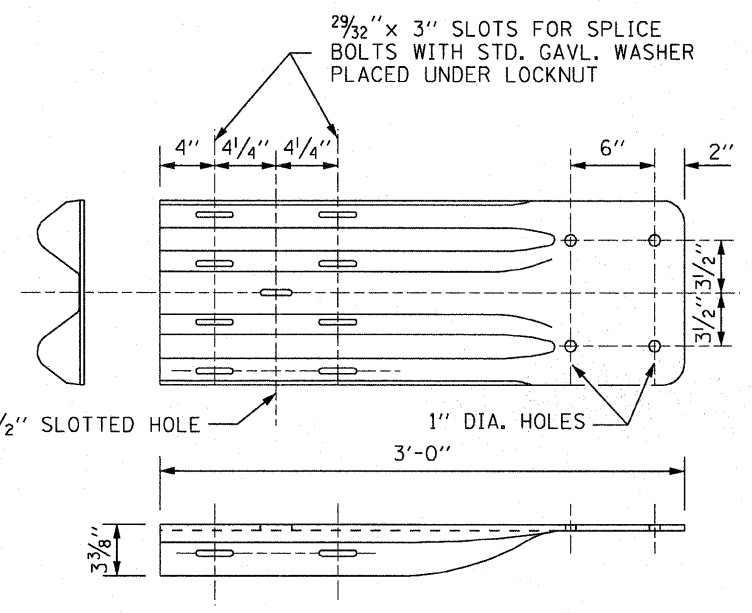
(40,000 LBS.) MIN. BREAKING STRENGTH
TIGHTEN TO TAUT TENSION.



END SECTION

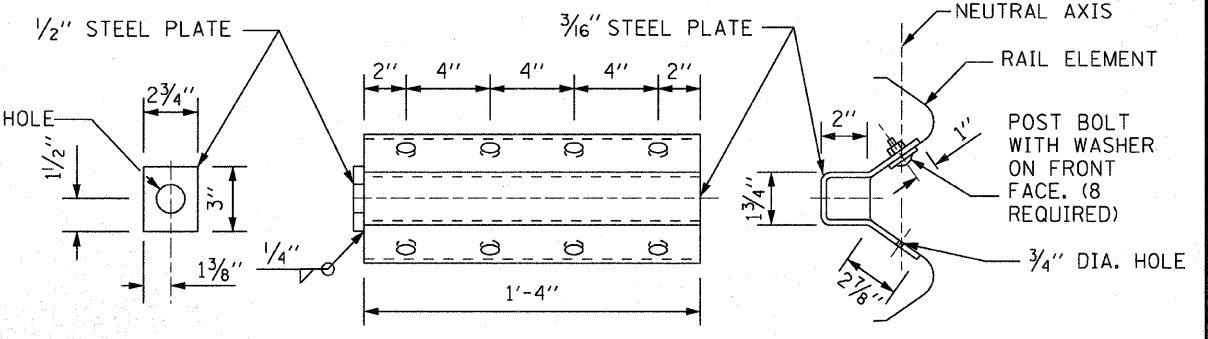


RAIL ELEMENT SPLICE



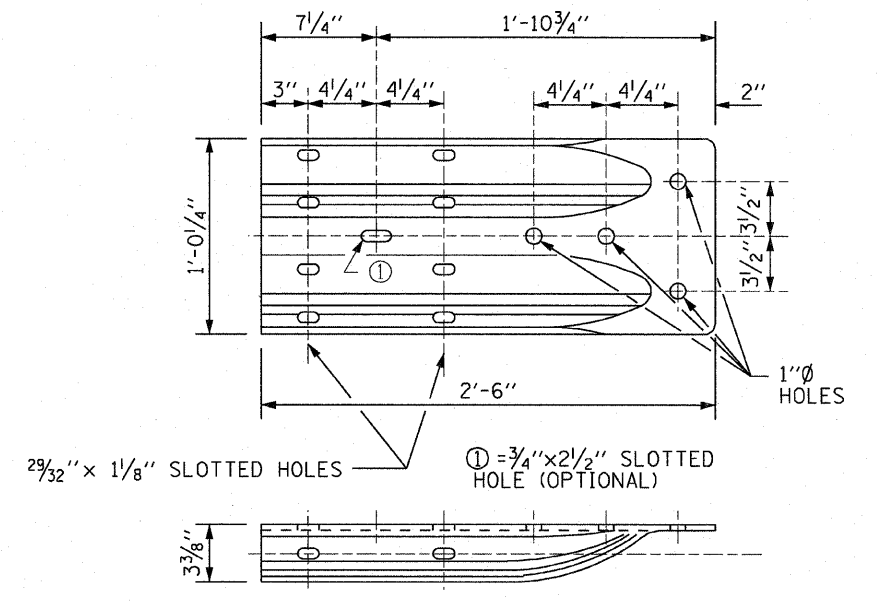
END SHOE

NOTE:
WHEN END SHOE IS ATTACHED TO A BRIDGE PARAPET WHICH HAS AN EXPANSION JOINT, THE BOLTS SHALL BE PROVIDED WITH A LOCKNUT OR DOUBLE NUT AND SHALL BE TIGHTENED ONLY TO A POINT THAT WILL ALLOW GUARDRAIL MOVEMENT.
THE STANDARD END SHOE SHALL BE ATTACHED TO THE CONCRETE WITH PRE-DRILLED OR SELF-DRILLING ANCHOR BOLTS. THE ANCHOR CONE SHALL BE SET FLUSH WITH THE SURFACE OF THE CONCRETE.
EXTERNALLY THREADED STUDS PROTRUDING FROM THE SURFACE OF THE CONCRETE WILL NOT BE PERMITTED.



NOTE:
ANCHOR PLATE T SHALL BE USED TO ATTACH CABLE ASSEMBLY TO GUARDRAIL WHEN REQUIRED ON TRAFFIC BARRIER TERMINALS.

ANCHOR PLATE T DETAILS



ALTERNATE END SHOE

Paul Kovacs
APPROVED..... CHIEF ENGINEER..... DATE 7-1-2009.

Illinois Tollway
Open Roads for a Faster Future

GALVANIZED STEEL PLATE
BEAM GUARDRAIL

STANDARD C1-03

398 OF 516