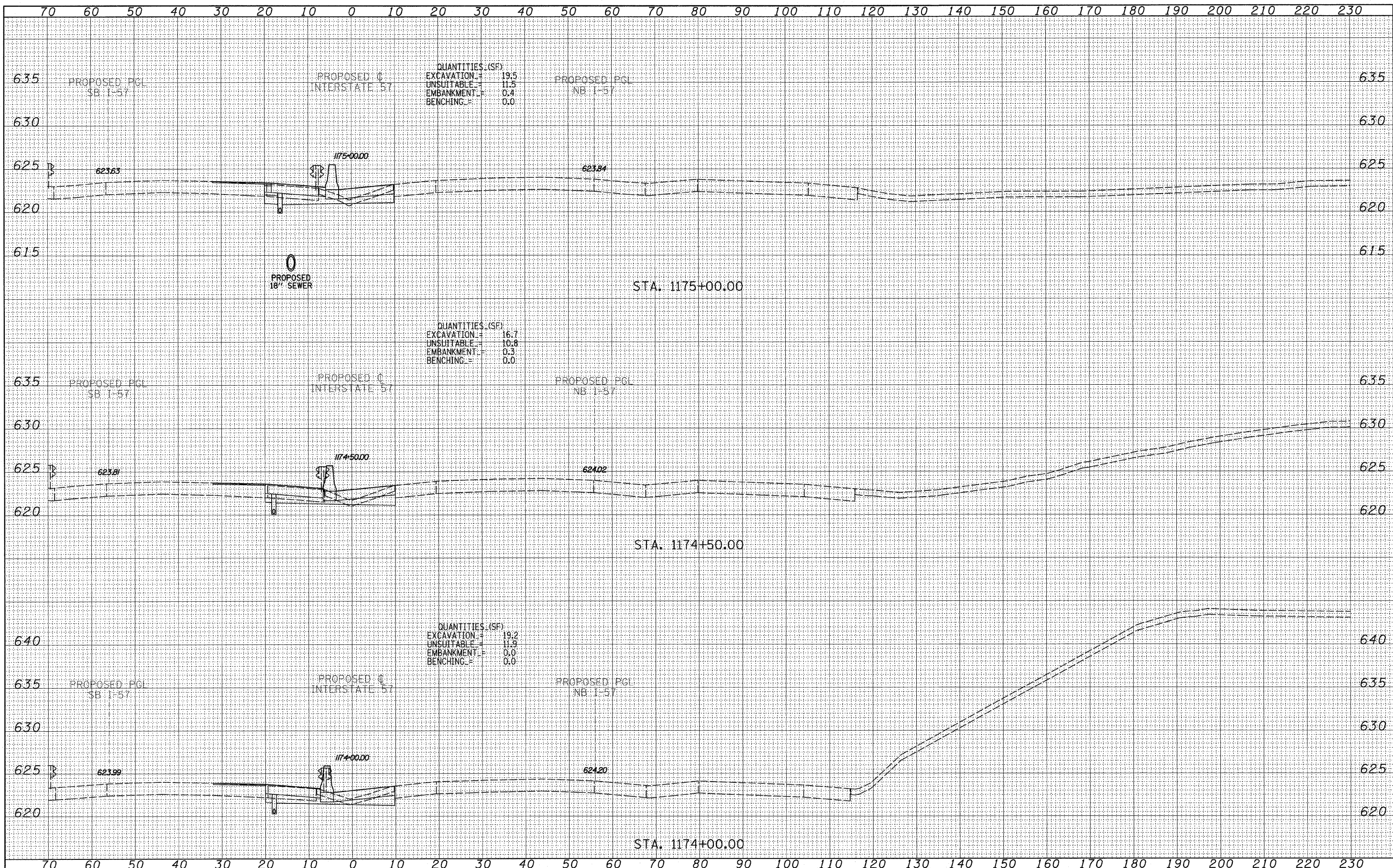


DATE	
BY	
NO.	
FINAL SURVEY	
REVISIONS	
PLOTTED	
TEMPLATE	
NOTE BOOK	
AREAS CHECKED	

DATE	
BY	
NO.	
ORIGINAL SURVEY	
REVISIONS	
PLOTTED	
TEMPLATE	
NOTE BOOK	
AREAS CHECKED	



TYLIN INTERNATIONAL

USER NAME =
 PLOT SCALE =
 PLOT DATE =

DESIGNED - JDF
 DRAWN - JDF
 CHECKED - JPM
 DATE - 3/18/2010

REVISED -
 REVISED -
 REVISED -
 REVISED -

STATE OF ILLINOIS
 DEPARTMENT OF TRANSPORTATION

I-57 AT I-294 INTERCHANGE PROJECT
 PROPOSED I-57 CROSS SECTIONS

SCALE: 1/2" = 10' H
 SHEET NO. OF SHEETS STA. 1174+00.00 TO STA. 1175+00.00

F.A.I. RTE.	SECTION	COUNTY	TOTAL SHEETS	SHEET NO.
57	1414.2B	COOK	516	418
FED. ROAD DIST. NO. ILLINOIS FED. AID PROJECT			CONTRACT NO. 60J27	