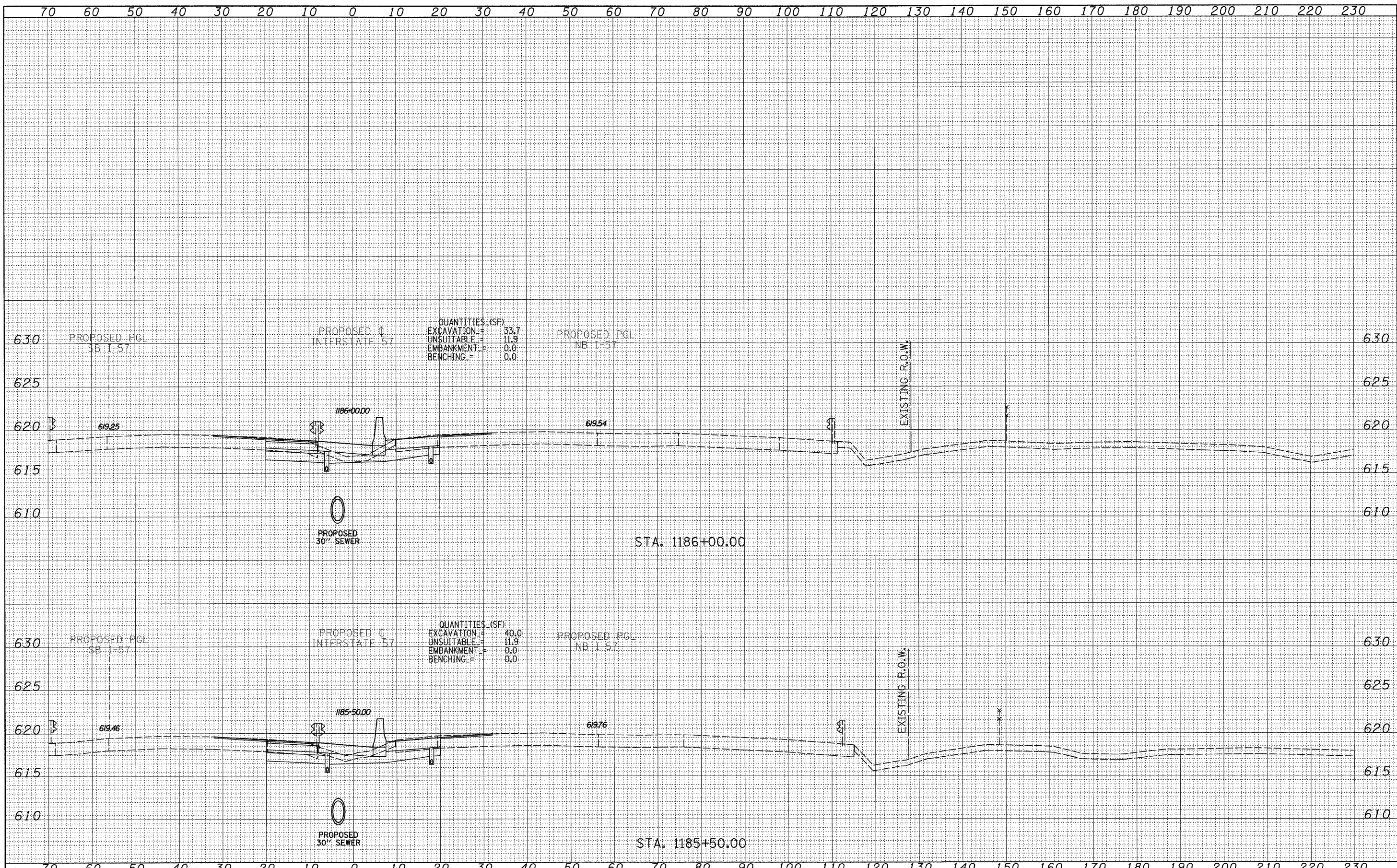


FINAL SURVEY	SURVEYED	BY	DATE
NO.	NO.		
AREAS CHECKED	AREAS CHECKED		

ORIGINAL SURVEY	SURVEYED	BY	DATE
NO.	NO.		
AREAS CHECKED	AREAS CHECKED		



QUANTITIES (SF)  
 EXCAVATION = 53.7  
 UNSUITABLE = 11.9  
 EMBANKMENT = 0.0  
 BENCHING = 0.0

QUANTITIES (SF)  
 EXCAVATION = 40.0  
 UNSUITABLE = 11.9  
 EMBANKMENT = 0.0  
 BENCHING = 0.0

TYLIN INTERNATIONAL

USER NAME =	DESIGNED - JDF	REVISED -
PLOT SCALE =	DRAWN - JDF	REVISED -
PLOT DATE =	CHECKED - JPM	REVISED -
	DATE - 3/18/2010	REVISED -

STATE OF ILLINOIS  
 DEPARTMENT OF TRANSPORTATION

I-57 AT I-294 INTERCHANGE PROJECT  
 PROPOSED I-57 CROSS SECTIONS  
 SCALE: 1" = 10' H  
 SHEET NO. OF SHEETS STA. 1185+50.00 TO STA. 1186+00.00

F.A.I. R.T.E.	SECTION	COUNTY	TOTAL SHEETS	SHEET NO.
57	1414.2B	COOK	516	429
FED. ROAD DIST. NO.			ILLINOIS FED. AID PROJECT	
			CONTRACT NO. 60J27	