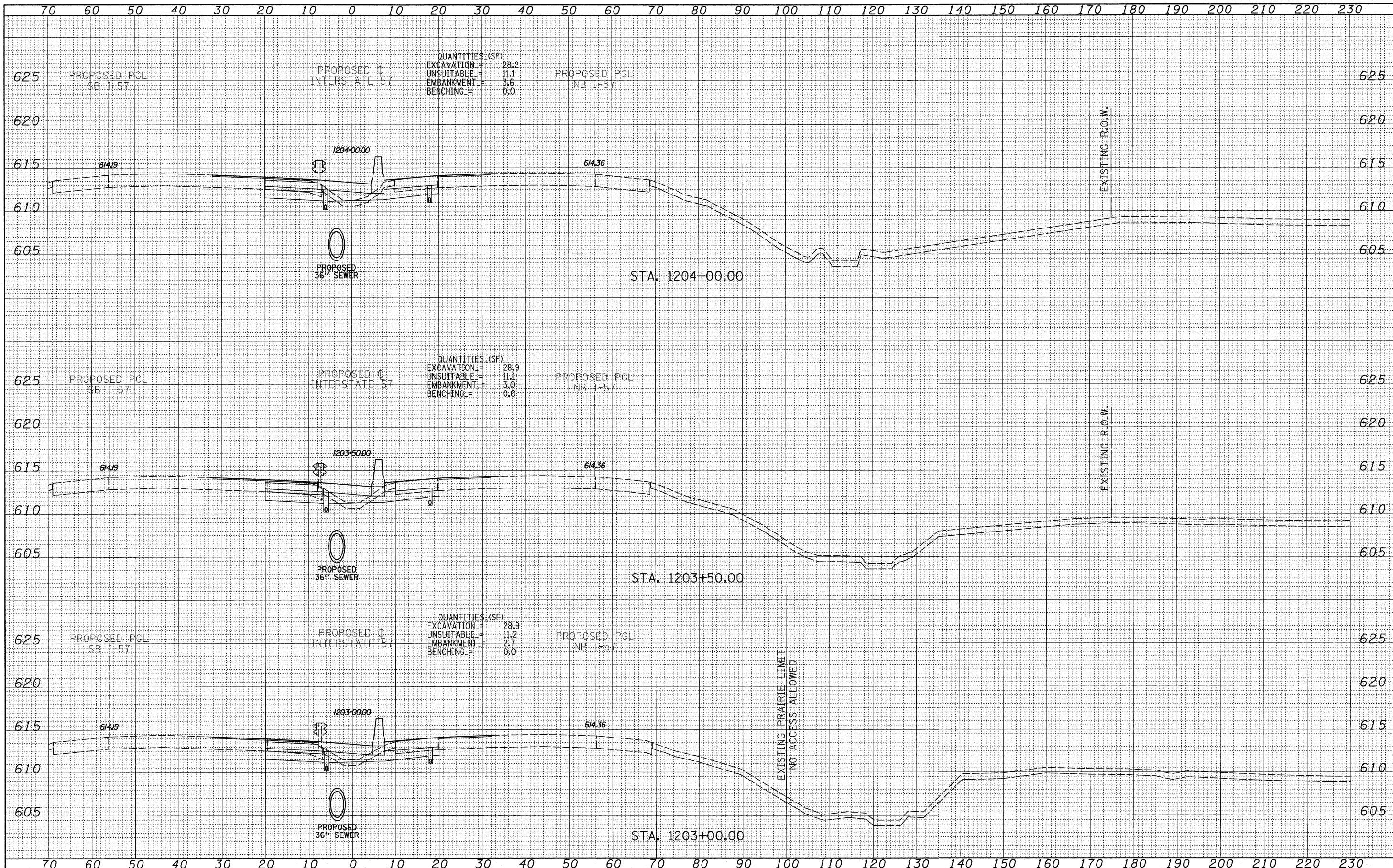


DATE	
BY	
FINAL SURVEY	
SURVEYED	
PLOTTED	
NOTE BOOK	
TEMPLATE	
AREAS CHECKED	
NO.	

DATE	
BY	
ORIGINAL SURVEY	
SURVEYED	
PLOTTED	
NOTE BOOK	
TEMPLATE	
AREAS CHECKED	
NO.	



QUANTITIES (SF)
 EXCAVATION = 28.2
 UNSUITABLE = 11.1
 EMBANKMENT = 3.6
 BENCHING = 0.0

QUANTITIES (SF)
 EXCAVATION = 28.9
 UNSUITABLE = 11.1
 EMBANKMENT = 3.0
 BENCHING = 0.0

QUANTITIES (SF)
 EXCAVATION = 28.9
 UNSUITABLE = 11.2
 EMBANKMENT = 2.7
 BENCHING = 0.0

TYLIN INTERNATIONAL

USER NAME =
 PLOT SCALE =
 PLOT DATE =

DESIGNED - JDF
 DRAWN - JDF
 CHECKED - JPM
 DATE - 3/18/2010

REVISED -
 REVISED -
 REVISED -
 REVISED -

STATE OF ILLINOIS
 DEPARTMENT OF TRANSPORTATION

I-57 AT I-294 INTERCHANGE PROJECT
 PROPOSED I-57 CROSS SECTIONS
 SCALE: 1" = 10' H
 SHEET NO. OF SHEETS STA. 1203+00.00 TO STA. 1204+00.00

F.A.I. RTE. 57	SECTION 1414.2B	COUNTY COOK	TOTAL SHEETS 516	SHEET NO. 442
FED. ROAD DIST. NO. ILLINOIS FED. AID PROJECT			CONTRACT NO. 60J27	