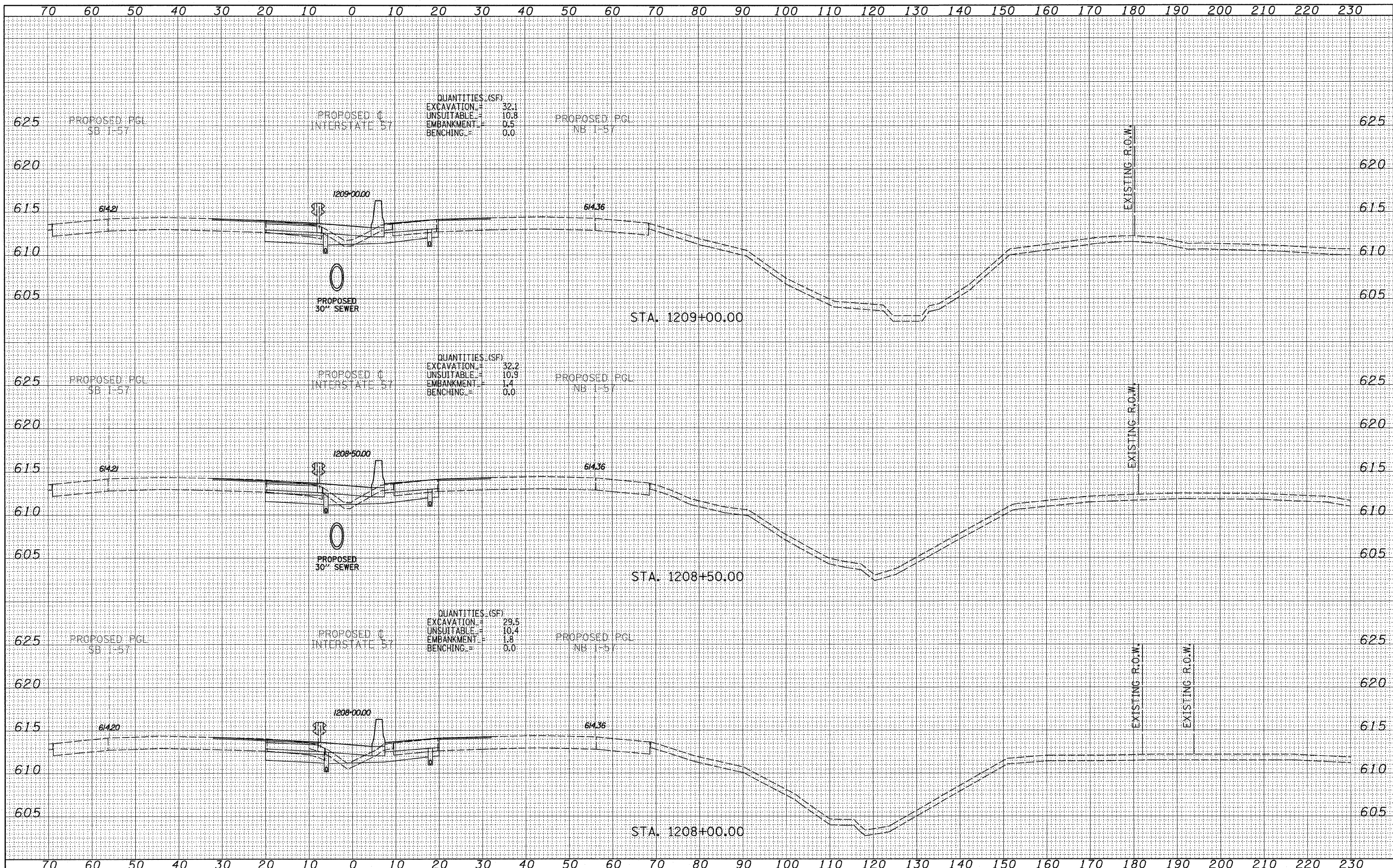


DATE	
BY	
FINAL SURVEY	
SURVEYED	
PLOTTED	
TEMPLATE	
NOTE BOOK	
NO.	
AREAS CHECKED	

DATE	
BY	
ORIGINAL SURVEY	
SURVEYED	
PLOTTED	
TEMPLATE	
NOTE BOOK	
NO.	
AREAS CHECKED	



TYLIN INTERNATIONAL

USER NAME =	DESIGNED - JDF	REVISED -
PLOT SCALE =	DRAWN - JDF	REVISED -
PLOT DATE =	CHECKED - JPM	REVISED -
	DATE - 3/18/2010	REVISED -

STATE OF ILLINOIS
DEPARTMENT OF TRANSPORTATION

I-57 AT I-294 INTERCHANGE PROJECT
PROPOSED I-57 CROSS SECTIONS

SCALE: 1" = 10' H
SHEET NO. OF SHEETS STA. 1208+00.00 TO STA. 1209+00.00

F.A.I. RTE.	SECTION	COUNTY	TOTAL SHEETS	SHEET NO.
57	1414.2B	COOK	516	446
CONTRACT NO. 60J27			ILLINOIS FED. AID PROJECT	