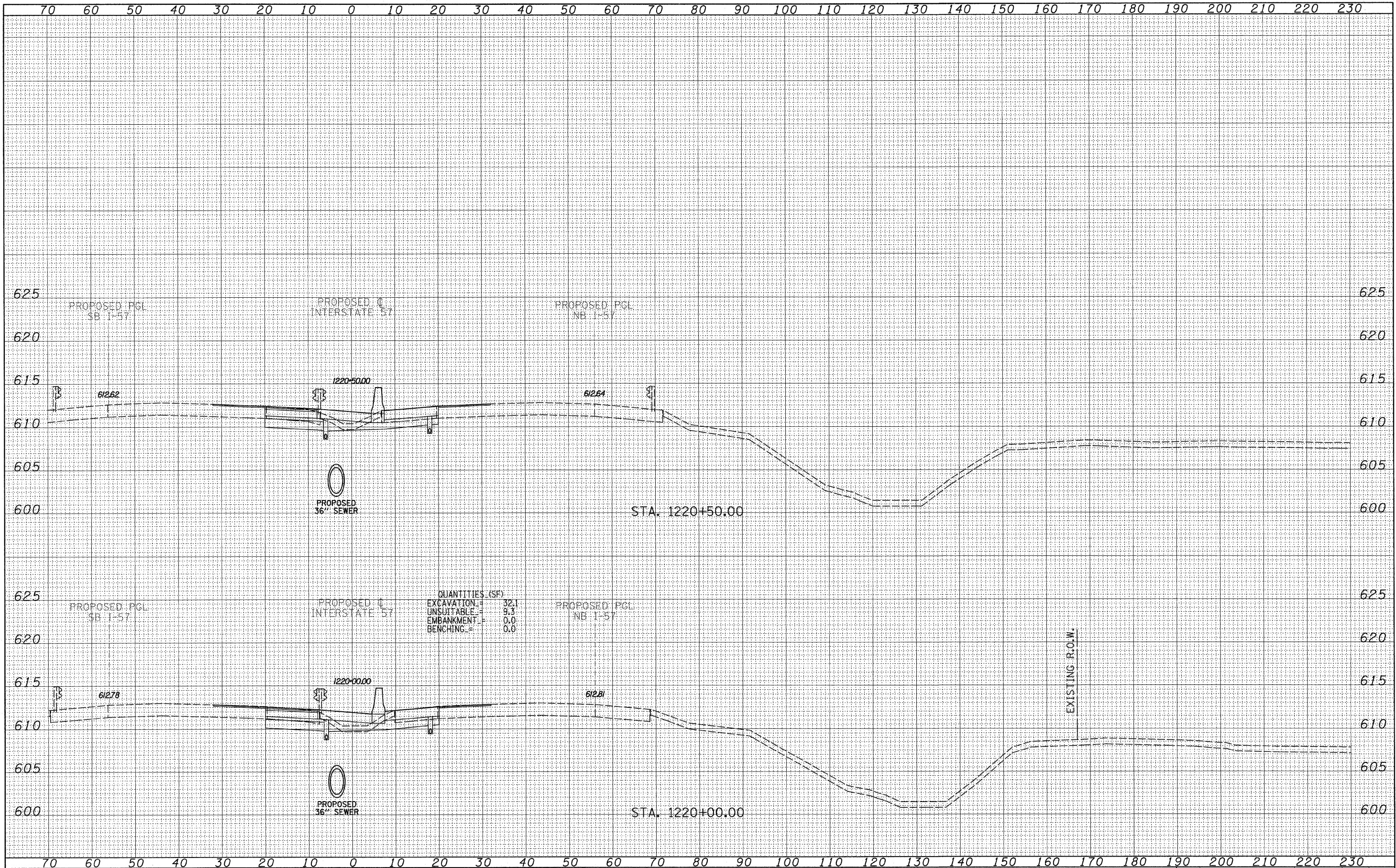


FINAL SURVEY	SURVEYED	DATE
NO. 7E BOOK	PLOTTED	BY
NO.	TEMPLATE	
	AREAS CHECKED	

ORIGINAL SURVEY	SURVEYED	DATE
NO. 7E BOOK	PLOTTED	BY
NO.	TEMPLATE	
	AREAS CHECKED	



QUANTITIES (SF)

EXCAVATION	=	32.1
UNSUITABLE	=	9.3
EMBANKMENT	=	0.0
BENCHING	=	0.0

TYLIN INTERNATIONAL

USER NAME =
 PLOT SCALE =
 PLOT DATE =

DESIGNED - JDF
 DRAWN - JDF
 CHECKED - JPM
 DATE - 3/18/2010

REVISED -
 REVISED -
 REVISED -
 REVISED -

**STATE OF ILLINOIS
 DEPARTMENT OF TRANSPORTATION**

**I-57 AT I-294 INTERCHANGE PROJECT
 PROPOSED I-57 CROSS SECTIONS**
 SCALE: 1" = 10' H
 SHEET NO. OF SHEETS STA. 1220+00.00 TO STA. 1220+50.00

F.A.I. RTE.	SECTION	COUNTY	TOTAL SHEETS	SHEET NO.
57	1414.2B	COOK	516	457
FED. ROAD DIST. NO. ILLINOIS FED. AID PROJECT			CONTRACT NO. 60J27	