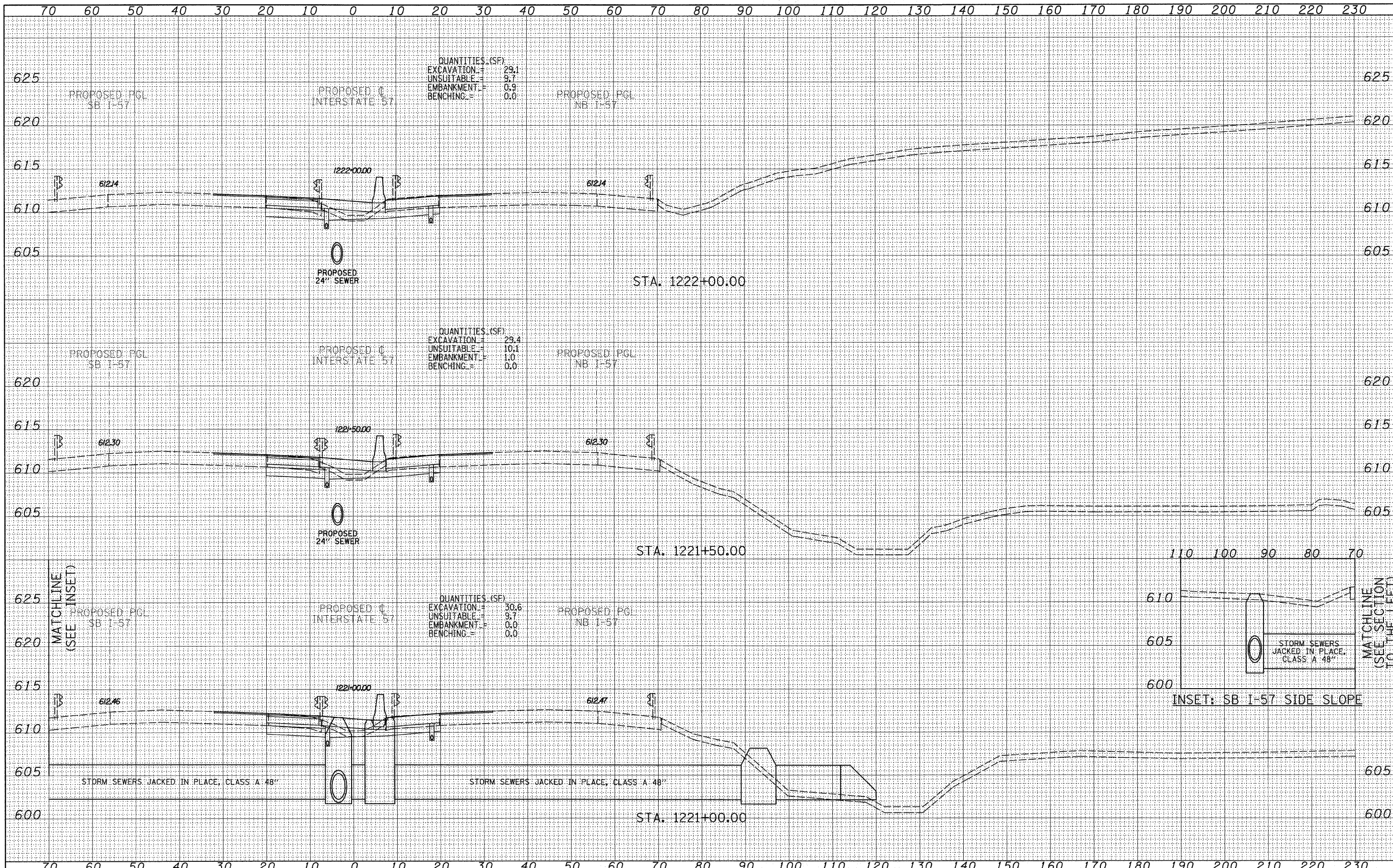


BY	DATE
FINAL SURVEY	SURVEYED
NOTE BOOK	PLOTTED
	TEMPLATE
	AREAS CHECKED

BY	DATE
ORIGINAL SURVEY	SURVEYED
NOTE BOOK	PLOTTED
	TEMPLATE
	AREAS CHECKED



QUANTITIES (SF)
EXCAVATION = 29.1
UNSUITABLE = 9.7
EMBANKMENT = 0.9
BENCHING = 0.0

QUANTITIES (SF)
EXCAVATION = 29.4
UNSUITABLE = 10.1
EMBANKMENT = 1.0
BENCHING = 0.0

QUANTITIES (SF)
EXCAVATION = 30.6
UNSUITABLE = 9.7
EMBANKMENT = 0.0
BENCHING = 0.0

STORM SEWERS
JACKED IN PLACE,
CLASS A 48"

TYLIN INTERNATIONAL

USER NAME =	DESIGNED - JDF	REVISED -
PLOT SCALE =	DRAWN - JDF	REVISED -
PLOT DATE =	CHECKED - JPM	REVISED -
	DATE - 3/18/2010	REVISED -

**STATE OF ILLINOIS
DEPARTMENT OF TRANSPORTATION**

I-57 AT I-294 INTERCHANGE PROJECT			
PROPOSED I-57 CROSS SECTIONS			
SCALE: 1" = 10' H	SHEET NO.	OF SHEETS	STA. 1221+00.00 TO STA. 1222+00.00

F.A.I. RTE. 57	SECTION 1414.2B	COUNTY COOK	TOTAL SHEETS 516	SHEET NO. 458
FED. ROAD DIST. NO.	ILLINOIS FED. AID PROJECT	CONTRACT NO. 60J27		