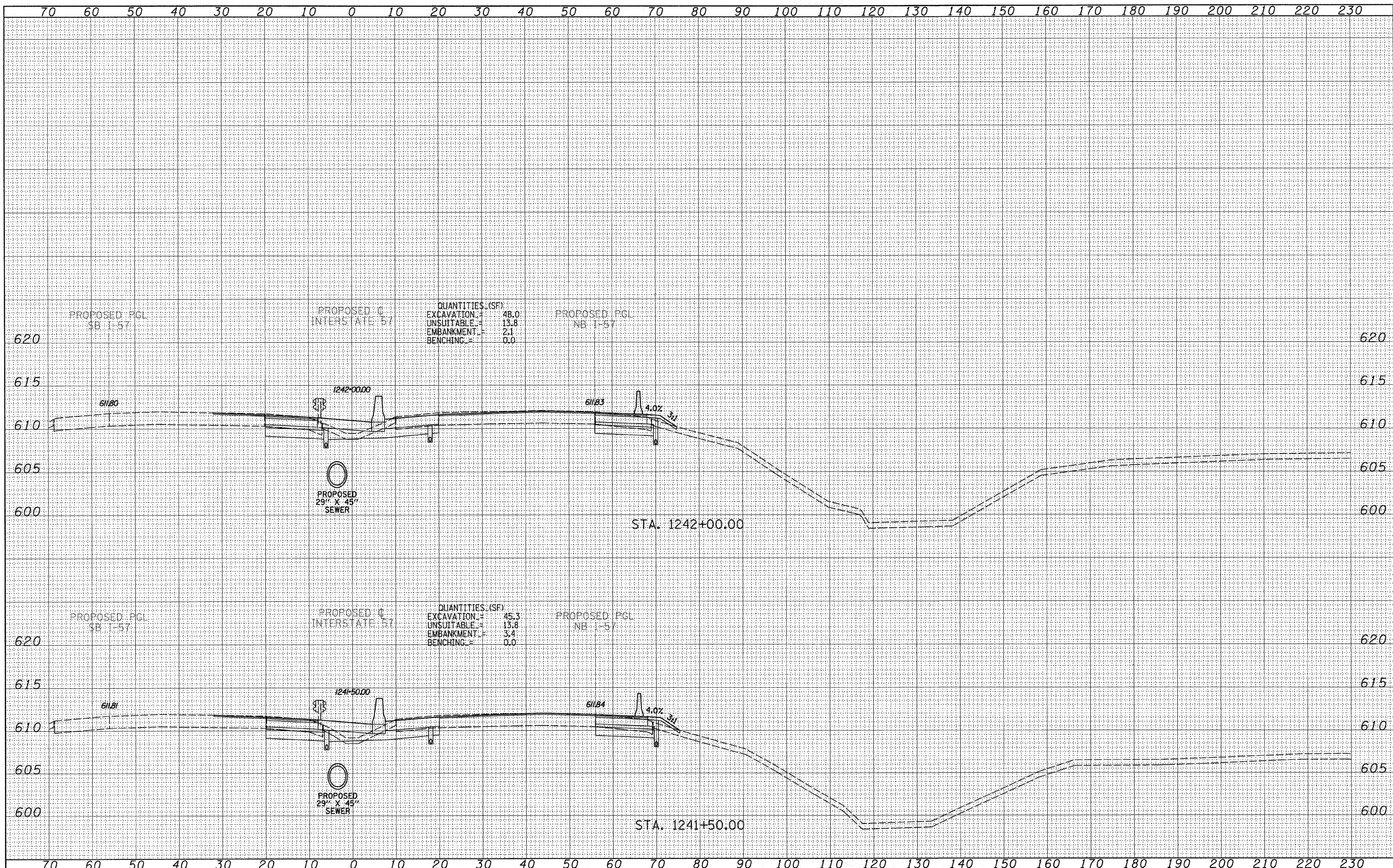


FINAL SURVEY	SURVEYED	BY	DATE
NOTE BOOK	PLOTTED		
NO.	TEMPLATE		
	AREAS CHECKED		

ORIGINAL SURVEY	SURVEYED	BY	DATE
NOTE BOOK	PLOTTED		
NO.	TEMPLATE		
	AREAS CHECKED		



QUANTITIES (SF)

EXCAVATION	=	48.0
UNSUITABLE	=	13.8
EMBANKMENT	=	2.1
BENCHING	=	0.0

QUANTITIES (SF)

EXCAVATION	=	45.3
UNSUITABLE	=	13.8
EMBANKMENT	=	3.4
BENCHING	=	0.0

TYLIN INTERNATIONAL

USER NAME =  
 PLOT SCALE =  
 PLOT DATE =

DESIGNED - JDF  
 DRAWN - JDF  
 CHECKED - JPM  
 DATE - 3/18/2010

REVISED -  
 REVISED -  
 REVISED -  
 REVISED -

STATE OF ILLINOIS  
 DEPARTMENT OF TRANSPORTATION

I-57 AT I-294 INTERCHANGE PROJECT  
 PROPOSED I-57 CROSS SECTIONS

SCALE: 1" = 10' H  
 SHEET NO. OF SHEETS STA. 1241+50.00 TO STA. 1242+00.00

F.A.I. RTE.	SECTION	COUNTY	TOTAL SHEETS	SHEET NO.
57	1414.2B	COOK	516	478
FED. ROAD DIST. NO. ILLINOIS FED. AID PROJECT			CONTRACT NO. 60J27	

P:\602542(57-294)\Road\PI\_157 BR\PI\_57XS\_SHT.dgn