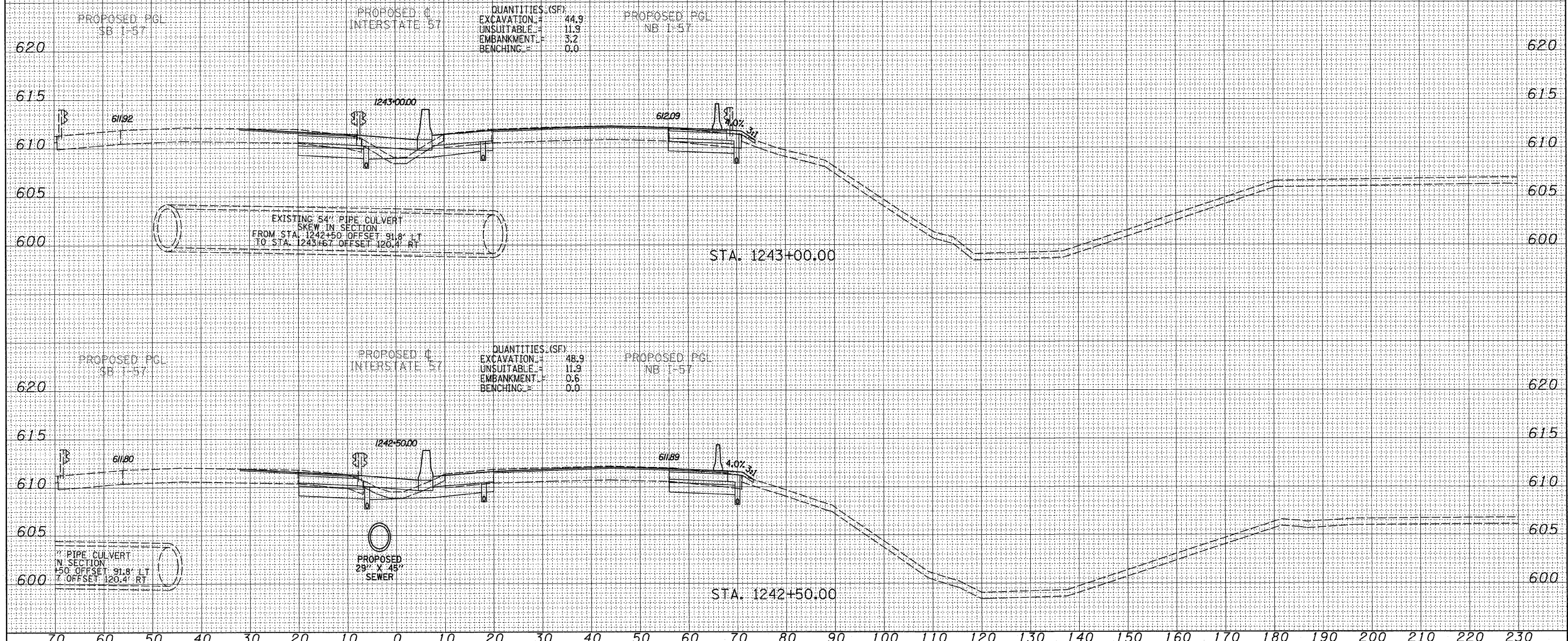


70 60 50 40 30 20 10 0 10 20 30 40 50 60 70 80 90 100 110 120 130 140 150 160 170 180 190 200 210 220 230

NOTE: AN EXISTING DITCH FLOWS FROM STA. 1246+25; OFFSET 120' LT TO STA. 1246+50; OFFSET 97' LT (REGRADING FOR THE PROPOSED IMPROVEMENT IS NOT REQUIRED)

| | |
|---------------|--|
| DATE | |
| BY | |
| SURVEYED | |
| PLOTTED | |
| TEMPLATE | |
| NOTE BOOK | |
| AREAS CHECKED | |
| NO. | |

| | |
|---------------|--|
| DATE | |
| BY | |
| SURVEYED | |
| PLOTTED | |
| TEMPLATE | |
| NOTE BOOK | |
| AREAS CHECKED | |
| NO. | |



TYLIN INTERNATIONAL

| | | |
|--------------|------------------|-----------|
| USER NAME = | DESIGNED - JDF | REVISED - |
| PLOT SCALE = | DRAWN - JDF | REVISED - |
| PLOT DATE = | CHECKED - JPM | REVISED - |
| | DATE - 3/18/2010 | REVISED - |

STATE OF ILLINOIS
DEPARTMENT OF TRANSPORTATION

| | | | | | | |
|------------------------------------|--|---|---------|--------------------|--------------|-----------|
| I-57 AT I-294 INTERCHANGE PROJECT | | F.A.I. RTE. | SECTION | COUNTY | TOTAL SHEETS | SHEET NO. |
| PROPOSED I-57 CROSS SECTIONS | | 57 | 1414.2B | COOK | 516 | 479 |
| SCALE: 1" = 10' | | SHEET NO. OF SHEETS | | CONTRACT NO. 60J27 | | |
| STA. 1242+50.00 TO STA. 1243+00.00 | | FED. ROAD DIST. NO. ILLINOIS FED. AID PROJECT | | | | |