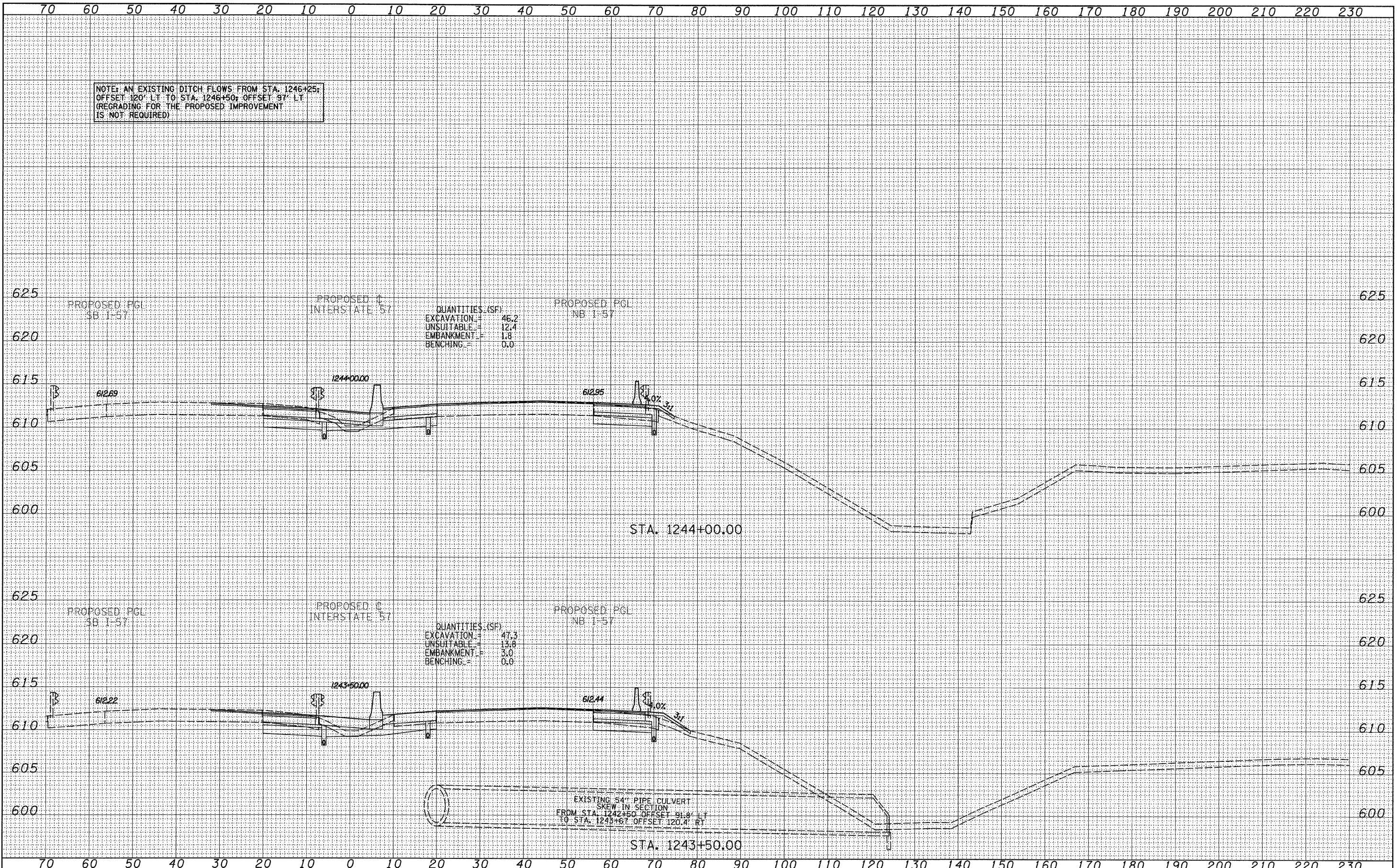


NOTE: AN EXISTING DITCH FLOWS FROM STA. 1246+25+  
 OFFSET 120' LT TO STA. 1246+50+ OFFSET 97' LT  
 (REGRADE FOR THE PROPOSED IMPROVEMENT  
 IS NOT REQUIRED)

DATE	
BY	
SURVEYED	
PLOTTED	
NOTE DATE	
AREAS CHECKED	
FINAL SURVEY	
NOTE BOOK	
NO.	

DATE	
BY	
SURVEYED	
PLOTTED	
NOTE DATE	
AREAS CHECKED	
ORIGINAL SURVEY	
NOTE BOOK	
NO.	



<b>TYLIN INTERNATIONAL</b> USER NAME = PLOT SCALE = PLOT DATE =	DESIGNED - JDF	REVISED - 4/29/2010	<b>STATE OF ILLINOIS</b> <b>DEPARTMENT OF TRANSPORTATION</b>	<b>I-57 AT I-294 INTERCHANGE PROJECT</b> <b>PROPOSED I-57 CROSS SECTIONS</b>		F.A.T. RTE. = 57	SECTION = 1414.2B	COUNTY = COOK	TOTAL SHEETS = 516	SHEET NO. = 480
	DRAWN - JDF	REVISED -		SCALE: 1" = 10' H	SHEET NO. OF SHEETS	STA. 1243+50.00 TO STA. 1244+00.00	FED. ROAD DIST. NO.	ILLINOIS FED. AID PROJECT	CONTRACT NO. 60J27	
	CHECKED - JPM	REVISED -								
	DATE - 3/18/2010	REVISED -								

P:\602540(57-294)\Road\PI.157 BR\PI.57XS\_SHT\_R.dgn