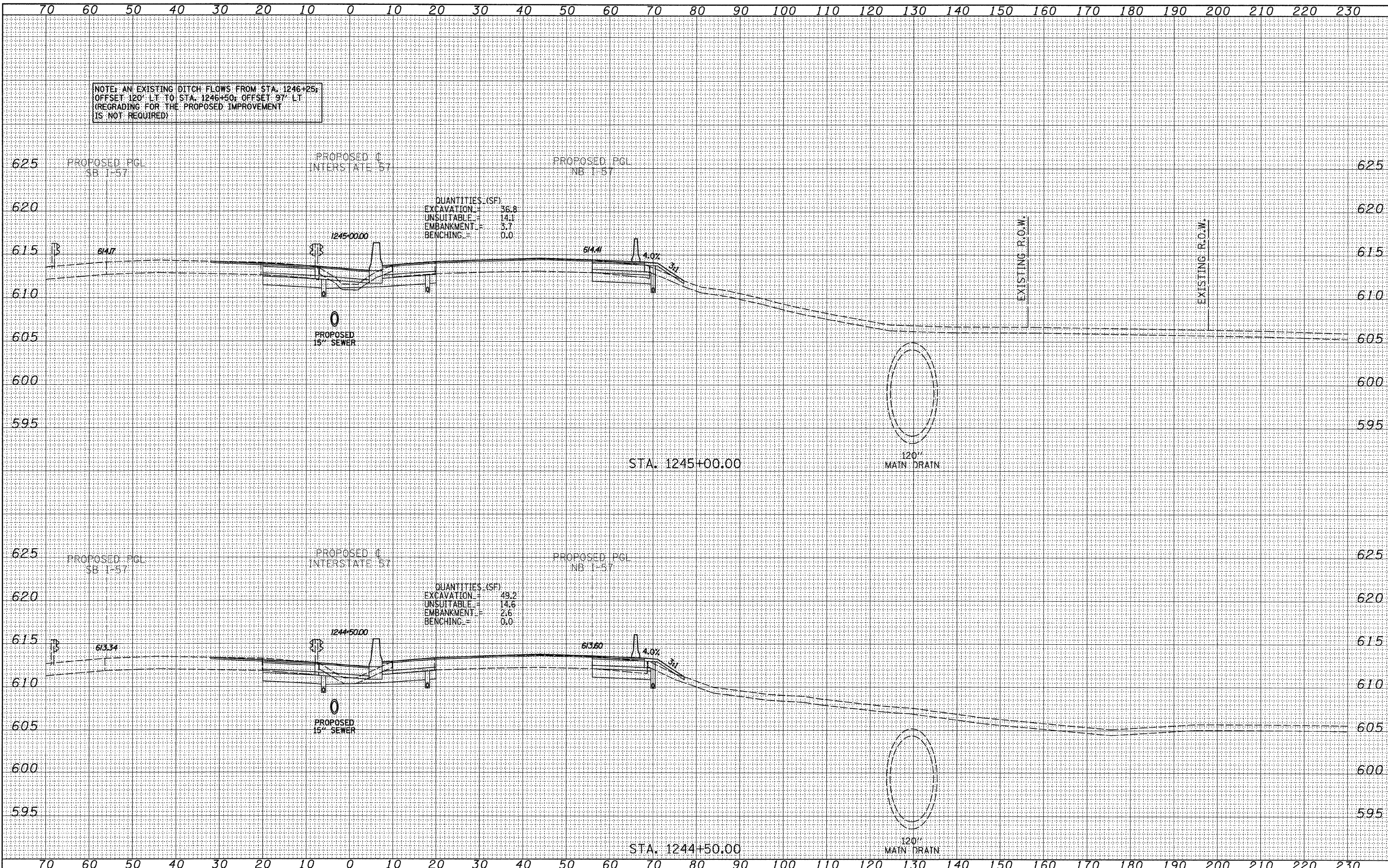


NOTE: AN EXISTING DITCH FLOWS FROM STA. 1246+25; OFFSET 120' LT TO STA. 1246+50; OFFSET 97' LT (REGRADING FOR THE PROPOSED IMPROVEMENT IS NOT REQUIRED)

DATE	
BY	
FINAL SURVEY	
SURVEYED	
PLOTTED	
DATE	
AREAS CHECKED	
NO.	

DATE	
BY	
ORIGINAL SURVEY	
SURVEYED	
PLOTTED	
DATE	
AREAS CHECKED	
NO.	



QUANTITIES (SF)  
 EXCAVATION = 36.8  
 UNSUITABLE = 14.1  
 EMBANKMENT = 3.7  
 BENCHING = 0.0

QUANTITIES (SF)  
 EXCAVATION = 49.2  
 UNSUITABLE = 14.6  
 EMBANKMENT = 2.6  
 BENCHING = 0.0

TYLIN INTERNATIONAL

USER NAME =	DESIGNED - JDF	REVISED - 4/29/2010
PLOT SCALE =	DRAWN - JDF	REVISED -
PLOT DATE =	CHECKED - JPM	REVISED -
	DATE - 3/18/2010	REVISED -

STATE OF ILLINOIS  
 DEPARTMENT OF TRANSPORTATION

I-57 AT I-294 INTERCHANGE PROJECT  
 PROPOSED I-57 CROSS SECTIONS  
 SCALE: 1" = 30' H  
 SHEET NO. OF SHEETS STA. 1244+50.00 TO STA. 1245+00.00

F.A.T. RTE.	SECTION	COUNTY	TOTAL SHEETS	SHEET NO.
57	1414.2B	COOK	516	481
CONTRACT NO. 60J27			ILLINOIS FED. AID PROJECT	

P:\602540(57-294)\Road\PI.157 BR\PI.157XS\_SHT\_R.dgn