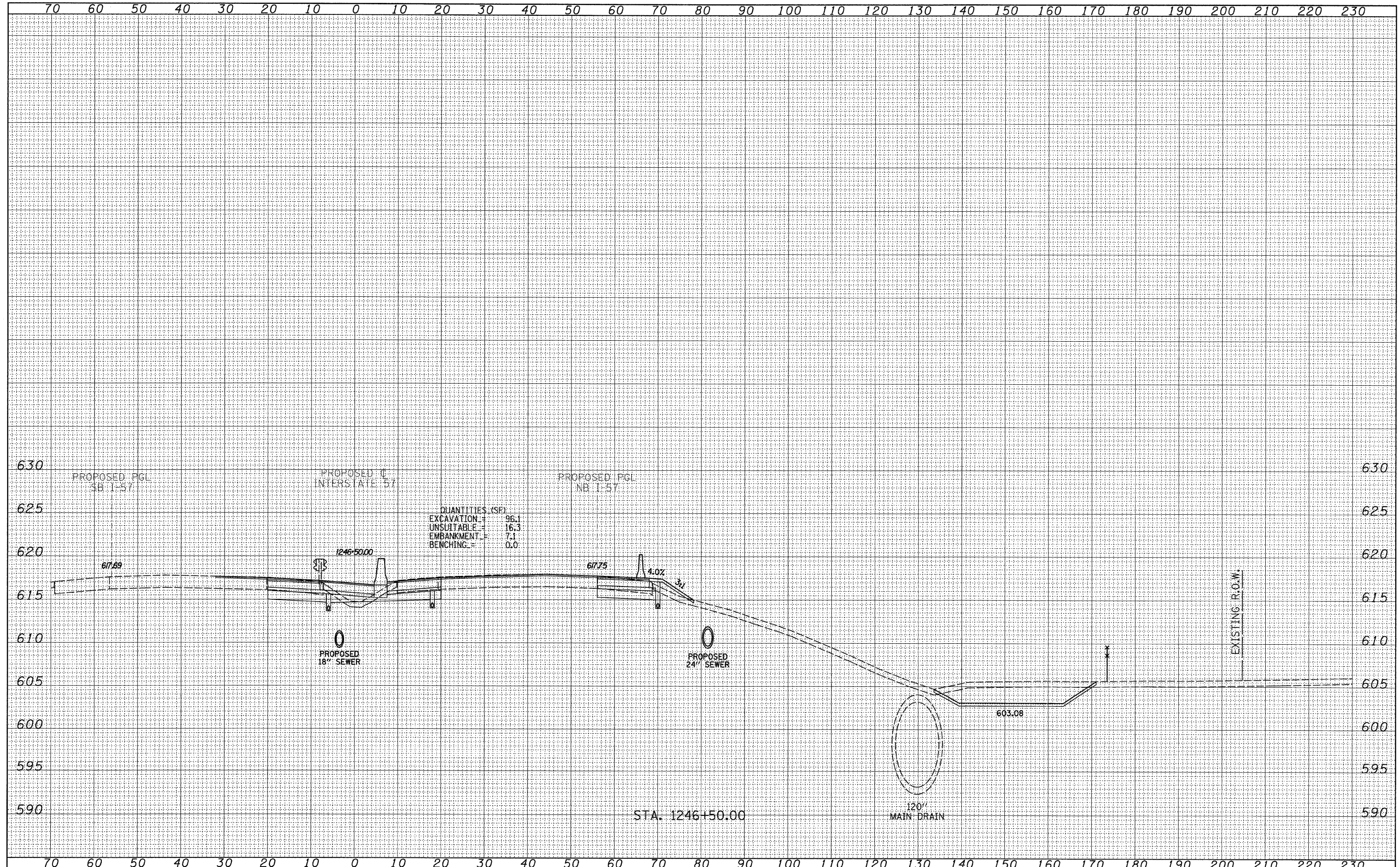


DATE	
BY	
FINAL SURVEY	
SURVEYED	
PLOTTED	
NOTE BOOK	
NO.	
AREAS CHECKED	

DATE	
BY	
ORIGINAL SURVEY	
SURVEYED	
PLOTTED	
NOTE BOOK	
NO.	
AREAS CHECKED	



QUANTITIES (SF)
 EXCAVATION = 96.1
 UNSUITABLE = 16.3
 EMBANKMENT = 7.1
 BENCHING = 0.0

TYLIN INTERNATIONAL

USER NAME =	DESIGNED - JDF	REVISED - 4/29/2010
PLOT SCALE =	DRAWN - JDF	REVISED -
PLOT DATE =	CHECKED - JPM	REVISED -
	DATE - 3/18/2010	REVISED -

**STATE OF ILLINOIS
 DEPARTMENT OF TRANSPORTATION**

**I-57 AT I-294 INTERCHANGE PROJECT
 PROPOSED I-57 CROSS SECTIONS**
 SCALE: 1" = 10' V, 1" = 80' H
 SHEET NO. OF SHEETS STA. 1246+50.00 TO STA. 1246+50.00

F.A.I. RTE.	SECTION	COUNTY	TOTAL SHEETS	SHEET NO.
57	1414.2B	COOK	516	484
FED. ROAD DIST. NO. ILLINOIS FED. AID PROJECT			CONTRACT NO. 60J27	

P:\602540(57-294)\Road\PI.157 BR\PI.57XS_SHT_R.dgn