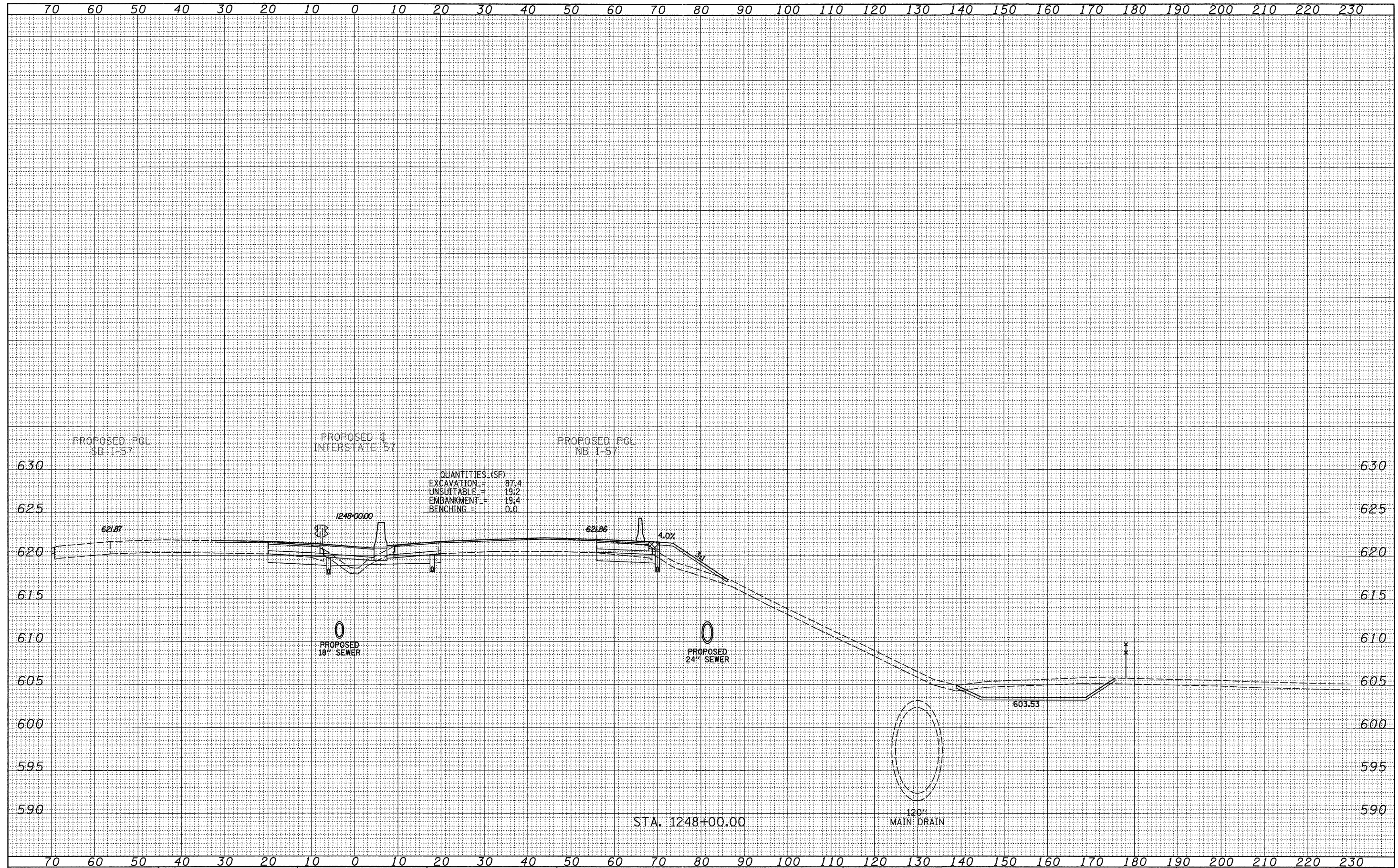


DATE	
BY	
SURVEYED	
PLOTTED	
NOTE DATE	
AREAS CHECKED	
NO.	

DATE	
BY	
SURVEYED	
PLOTTED	
NOTE DATE	
AREAS CHECKED	
NO.	



TYLIN INTERNATIONAL

USER NAME =	DESIGNED - JDF	REVISED - 4/29/2010
PLLOT SCALE =	DRAWN - JDF	REVISED -
PLLOT DATE =	CHECKED - JPM	REVISED -
	DATE - 3/18/2010	REVISED -

**STATE OF ILLINOIS
DEPARTMENT OF TRANSPORTATION**

**I-57 AT I-294 INTERCHANGE PROJECT
PROPOSED I-57 CROSS SECTIONS**

F.A.I. RTE.	SECTION	COUNTY	TOTAL SHEETS	SHEET NO.
57	1414.2B	COOK	516	487
FED. ROAD DIST. NO.			ILLINOIS FED. AID PROJECT	